

theater  
**Wit**  
 presents  
**Naperville**  
 by Mat Smart

Cast

Candice .....	Laura T. Fisher*
Howard .....	Mike Tepeli
Anne.....	Abby Pierce
TC.....	Andrew Jessop
Roy.....	Charlie Strater

Understudies

Jean Marie Koon / Brian Davenport / Tiffany Johnson

Crew

Director .....	Jeremy Wechsler
Assistant Director .....	William Sidney Parker
Scenic Design .....	Joe Schermoly
Lighting Design .....	Alexander Ridgers
Costume Design .....	Christine Pascual**
Properties Design.....	Amanda Herrmann
Sound Design .....	Ethan Deppe
Audience Design .....	Kristina Valada-Viars
Assistant Audience Design .....	Greg Knapp
Co-Technical Director .....	Andrew Glasenhardt
Co-Technical Director .....	Alex "Dizzy" Hutson
Master Electrician.....	Kristof Janezic
Scenic Charge .....	Jessica Howe
Production Manager.....	Majel Cuza
Stage Manager.....	Katrina Herrmann*
Asst Stage Manager.....	Shannon Rourke
Casting .....	Clare Cooney

\* Denotes member of Actors' Equity Association,  
 the union of professional stage managers in the United States.

\*\* Denotes member of USAA

Developed in part at Vineyard Arts Project, Edgartown, MA:

Ashley Melone, Founder and Artistic Director.

Naperville received a developmental workshop at

Cleveland Play House / Case Western Reserve University.

It received a developmental reading at Primary Stages, New York, NY.

The World Premiere was produced by Slant Theatre Project, New York, NY in Nov/Dec 2014.

Theater Wit thanks its generous institutional supporters, which include the Actor's Equity Foundation, the Gaylord and Dorothy Donnelley Foundation, the John D. and Catherine T. MacArthur Foundation, the MacArthur Fund for Arts and Culture at Prince, the Saints Volunteers for the Performing Arts and the Shubert Foundation. Additionally, this program is partially supported by a grant from the Illinois Arts Council Agency and by a CityArts Grant from the City of Chicago Department of Cultural Affairs and Special Events.

## BIOGRAPHIES



**Laura T. Fisher** (*Candice*) happily returns to Theatre Wit! Previously here: Greer Garfein in Madeleine George's SEVEN HOMELESS MAMMOTHS WANDER NEW ENGLAND, and served as

assistant director to Jeremy Wechsler for THE CURIOUS CASE OF THE WATSON INTELLIGENCE. Laura originated the role of Mary Page at 50 in the world premier Steppenwolf Theatre Production of Tracy Lett's MARY PAGE MARLOWE. Laura has performed at The Goodman, Court, Northlight, Chicago Shakespeare, Victory Gardens and others. She received the Joseph Jefferson and After Dark awards for Famous Door's Early and Often, and Jeff nominations for Famous Door's Remembrance, Hushabye Mountain and Remy Bumppo's The Secret Rapture. She created devised works with Plastiscene and Cardiff Giant. Favorite productions include Famous Door's The Living, Cider House Rules Parts I and II, and A Mislaid Heaven; The Next Theatre's Frozen and Defiance; and Pegasus' Company. Out-of-town: Good People at Milwaukee Rep, Arcadia at Indiana Rep, and private performances in New York, Singapore, Dubai, and Saudi Arabia. TV/Film: Contagion, Jessica, Body(s) (short), Chicago Fire, and Sense8. Laura is a member of SAG-AFTRA, AEA, and is represented by Grossman Jack Talent. Laura is the Coordinator of the Chicago Code of Conduct. Notinourhouse.org



**Andrew Jessop** (*TC*) is excited to return to Theater Wit after having performed as Sam/Mr. Burns in MR. BURNS – A POST ELECTRIC PLAY and as Don/Franklin in COMPLETENESS.

Other credits include A CHRISTMAS CAROL (Goodman Theatre); THE SUN KING (Elements Contemporary Ballet); ELLING, BUG, LOBBY HERO (Jeff Nomination - Best Actor), EQUUS, THE PILLOWMAN (Jeff Nomination - Best Actor), WAITING FOR GODOT, A VIEW FROM THE BRIDGE (Redtwist Theatre); BRAVE NO WORLD (Kennedy Center); UNCLE SAM'S SATIRIC SPECTACULAR, CAUCASIAN CHALK CIRCLE, TERMS OF THE AGREEMENT, A CHRISTMAS CAROL (Actors Theatre of Louisville). He also directed AUTOBAHN (Awkward Pause Theatre); MAN FROM NEBRASKA (Redtwist Theatre - Jeff Award Winner - Best Production 2011). Andrew studied clarinet for 8 years with Ernest Gross of the Louisville Orchestra. He is represented by Gray Talent Group, LLC. Special thanks to Ernie, Roberta, and Amy for your ongoing support.



**Abby Pierce** (*Anne*) Abby Pierce was most recently in ROLLING (Jackalope Theater). Other Chicago credits include: WITH LOVE AND A MAJOR ORGAN (Strawdog Theatre Company), HEAT WAVE (Steppenwolf Garage) and RAPTURE, BLISTER, BURN (u/s Goodman Theatre). Other regional credits include: RICHARD III, CYMBELINE (Ricardo Montalban Theatre); PROOF, SIDEMAN (Del Rey Theatre); ROMEO AND JULIET (Geffen Playhouse, OP). Directing credits include: THE PILLOWMAN, RABBIT HOLE, COYOTE AND THE ORIGIN OF DEATH, ONLY YOU, and MAN VS SUIT. Film and TV credits include: Chicago PD, TBS's Rooftop Stand Up Comedy Hour, Game Day, Blur, The Way To Go, and Silo. Abby is a graduate of The School at Steppenwolf, and is currently a teacher at Piven Theatre, Beacon Academy, and Cook County Jail (with the Prison Project). She is represented by Stewart Talent.



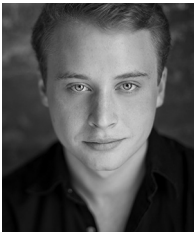
**CHARLIE STRATER**  
(Roy) is a graduate of the Northwestern University School of Speech (class of '91). During sophomore year, classmate Jeremy Wechsler cast Charlie in the role of Cain in a student production of

Arthur Miller's CREATION OF THE WORLD AND OTHER BUSINESS. Charlie is pleased and relieved that Mr. Wechsler's memory of that performance is pleasant enough or/and cloudy enough to warrant casting him again in Naperville.



**MIKE TEPELI** (Howard) makes his Theater Wit debut but is returning to the space for the fifth time, last being seen in Haven Theatre's LAST TRAIN TO NIBROC (2016 Non-Equity Jeff Nomination Best Principal Actor-Play).

Chicago Credits: COCKED (Victory Gardens); GREAT EXPECTATIONS (Strawdog Theatre); THE ORIGINAL GREASE (2011 Equity Jeff Award: Best Mid-Size Musical), IT'S A WONDERFUL LIFE: THE RADIO PLAY (American Theatre Company), BURNT PART BOYS (Griffin); BIG RIVER, ELEPHANT MAN (BoHo). THE GINGERBREAD HOUSE, TRAGEDY: A TRAGEDY (RedTape Theatre). Regional: TROILUS AND CRESSIDA (Taffety Punk). TV: "Shameless: US", Showtime Network. He is represented by Gray Talent Group LLC. For Momma Jean.



**BRIAN DAVENPORT**  
(Understudy, Howard and Roy) is excited and grateful to be working with Theater Wit for the very first time. Previously, he has worked with Griffin, Actor Factor, and Nothing Special

Productions, and, regionally, the Notre Dame Shakespeare Festival. He is also the co-creator of an original musical in development, BARFLIES. Many thanks to all the people you would expect and to the very generous folk in and around the Wit.



**TIFFANY RENEE JOHNSON**  
(Understudy Anne, TC) is very excited to work with Theater Wit for the first time! She is proud Chicago native and graduate of Howard University (Theatre Arts BFA). Some of

her favorite theatre credits are RACE (Next Act Theatre); The Story of Wilma Rudolph (Historical Perspectives for Children); Hairspray (Drury Lane Theatre); The Nativity (Congo Square Theatre); The Bluest Eye & The Sirens (Environmental Theatre Space). TV/film credits include Chicago PD, Chicago Fire & Dhoom 3. She also had the pleasure of filming her first national commercial last year. Tiffany thanks her mother & family for their undying love & support. She credits her agency, Gray Talent Group, for being awesome. "The sun is my limit & I won't stop reaching until I hold it in my hands!" - TRJ To God be every ounce of the glory. TiffanyReneeJohnson.com



**JEAN MARIE KOON**  
(Understudy Candice) was most recently seen as Majorie King in Pride Films and Plays production of TEN DOLLAR HOUSE at the Piccolo Theatre in Evanston. Prior to that she appeared as Carol

Berge in ANNA IN THE AFTERLIFE (Polarity Ensemble Theatre). She has also worked in Chicago with Steep, Jackalope, Artemisia, Lifeline, Red Key, and Single Action theatres and appeared in BECHDEL FEST 3. She is married to playwright Robert Koon, and her daughter, Kelsey, is pursuing a PhD in Archeology.

**MAT SMART** (*Playwright*) was born in Naperville, graduated from Waubonsie Valley High School, and currently lives in Manhattan. Past Chicago productions include: THE ROYAL SOCIETY OF ANTARCTICA (premiere at Gift Theatre, 2015 Equity Jeff Award for Best New Work), Samuel J. and K. (Steppenwolf for Young Adult, premiere at Williamstown Theatre Festival), THE 13TH OF PARIS (LiveWire, premiere at City Theatre in Pittsburgh), and KEEP ISHMAEL, a musical with music by Ethan Deppe and directed by Evan Cabnet (White Horse Theatre Company). He is currently writing a commission for The Second City and the La Jolla Playhouse. NAPERVILLE was first produced in 2014 by Slant Theatre Project in NYC. Other plays include: TINKER TO EVERS TO CHANCE (Geva, Merrimack Rep) and THE HOPPER COLLECTION (Magic Theatre, Huntington). An avid baseball fan and traveler, he has been to all 30 of the current MLB stadiums, all 50 states and all of the continents. Undergrad: University of Evansville. MFA: UCSD

**JEREMY WECHSLER** (*Director*) is the Artistic Director of Theater Wit where he has directed the Chicago premieres of THE NEW SINCERITY, THE (CURIOUS CASE OF THE) WATSON INTELLIGENCE (Best of 2015 - Sun Times), BAD JEWS (Best of 2015 - New City), MR BURNS: A POST-ELECTRIC PLAY (Time Out Peoples' Choice Award for Direction, Best of 2015), SEVEN HOMELESS MAMMOTHS WANDER NEW ENGLAND (Sun Times Best of Year 2014), COMPLETENESS, TIGERS BE STILL, THIS, THE FOUR OF US, FEYDEAU-SI-DEAU, MEN OF STEEL, THOM PAIN (BASED ON NOTHING) (Jeff Award - Best Solo Performance), TWO FOR THE SHOW and annual favorite THE SANTALAND DIARIES. Under Jeremy's leadership, Theater Wit has emerged as the go to destination for cutting edge contemporary work, gaining national recognition for excellence. He has directed over sixty shows in the last twenty years at various theaters, including TRAGEDY A TRAGEDY, THE FLU SEASON, A TASTE OF HONEY ("US Best of 2008" in The Wall Street Journal), NOW THEN AGAIN (Jeff Award - Best New Work), THE PLAY ABOUT THE SQUIRREL, THE WHITE DEVIL, THIS IS NOT A PLAY ABOUT CANCER, PEER GYNT, THE REAL THING, SZINHAZ, THE DUCHESS OF MALFI, TRAGEDY A TRAGEDY,

TITUS ANDRONICUS, THE ROARING GIRL, FLIGHT, THE MOST FABULOUS STORY EVERY TOLD, THIS IS THE RILL SPEAKING, HAY FEVER, A MONTH IN THE COUNTRY, EUROPE, HENRY VI: BLOOD OF A NATION, THE PROMISE, SPIN, UN ROBOT, HORROR ACADEMY, KIND LADY, PLAYING BY THE RULES, THE MARRIAGE OF BETTE AND BOO, SOLITAIRE, THE COARSE ACTING SHOW, LIFE IS A DREAM, THE PRISONER'S DILEMMA, CABARET and THE THREEPENNY OPERA. His productions have been nominated for and won multiple awards for design, performance, adaptation and best new work.

**JOE SCHERMOLY** (*Scenic Design*) returns for his fifth show at Theater Wit, where he has previously designed THE WATSON INTELLIGENCE, MR BURNS, SEVEN HOMELESS MAMMOTHS and COMPLETENESS. As a Griffin ensemble member his designs include POCATELLO, TITANIC, SPELLING BEE, FLARE PATH, PUNK ROCK, PORT, CONSTANT WIFE and more. Other credits include: CONSTELLATIONS (Steppenwolf); SAMSARA (Victory Gardens); TRAVESTIES (Remy Bumppo); AMERICAN IDIOT (The Hypocrites); STUPID FUCKING BIRD, IDOMENEUS, THE UGLY ONE (Sideshow); Rabbit (Stage Left); THE SEAFARER, LAY ME DOWN SOFTLY (Irish Theatre of Chicago). Joe studied set design at Northwestern University and has received two After Dark Awards and three Jeff Nominations. [www.joeschermoly.com](http://www.joeschermoly.com)

**ALEXANDER RIDGERS** (*Lighting Design*) is a lighting designer based in Chicago originally hailing from Edinburgh, Scotland. Alexander worked extensively with UK theatres with credits including Royal Opera House, British Youth Opera, National Youth Theatre of GB, and the Royal Conservatoire of Scotland before moving to the US to study towards an MFA in theatre design at Northwestern University. Northwestern credits include: AMERICAN IDIOT: THE MUSICAL (Oct 2015), EQUIVOCATION (Feb 2016), HIT THE WALL (April 2015), ANNA IN THE TROPICS (May 2016) and recent credits include Associate Lighting Designer on ATC's XANADU. Alexander was the recipient of the Michael Merritt Best Student Exhibit prize in May 2016 and is very happy to be debuting his design work in the city of Chicago at Theater Wit.

**CHRISTINE PASCUAL** (*Costume Design*) is delighted to be back at Theater Wit. Previous Theater Wit designs are SEVEN HOMELESS MAMMOTHS WANDER NEW ENGLAND, TIGERS BE STILL and FOUR OF US. Recent designs: THE AFRICAN COMPANY PRESENT RICHARD III (American Players Theatre), KILL FLOOR, THE PROJECTS, THE ROYALE (American Theater Company), SUNSET BABY (Timeline Theatre), NEW STAGES FESTIVAL, FEATHERS AND TEETH (Goodman Theatre) Additional credits are: TAMER OF HORSES, A VIEW FROM THE BRIDGE, WHITE TIE BALL (Teatro Vista), ECSTASY (Cole Theatre), EAT YOUR HEART OUT, WRENS (Rivendell), PINKLANDIA (16th Street Theater), SEVEN GUITARS, FYIN' WEST (Court Theatre), MR. CHICKEE'S FUNNY MONEY, BUD NOT BUDDY, JACKIE AND ME (Chicago Children's Theater), THE HAPPIEST SONG PLAYS LAST, FISH MEN, EL NOGALAR (Goodman Theatre), BOEING BOEING (Drury Lane), DISCONNECT, THE ROMANCE OF MAGNO RUBIO, BLACKBIRD, WE ARE PROUD TO PRESENT A PRESENTATION...(Victory Gardens), TREVOR, SIMPATICO, MEGACOSM (A Red Orchid Theatre), FABULATION, MADAGASCAR (Next Theatre), THE HOUSE OF MANGO STREET (Steppenwolf), JOE TURNER'S COME AND GONE, BLACK NATIVITY, SEVEN GUITARS, ALI (Congo Square). Regional credits: THE ISLAND (American Players), JOE TURNER'S COME AND GONE (Centerstage), FENCES (Virginia Stage) Off Broadway: THE ELABORATE ENTRANCE OF CHAD DEITY (Second Stage) nominated for Henry Hewes Award for Best Production Design for THE ELABORATE ENTRANCE OF CHAD DEITY, Black Theater Alliance Ward for Best Costume for SEVEN GUITARS, JOE TURNER'S COME AND GONE (Congo Square) Member of United Scenic Artists Local 829.

**AMANDA HERRMANN** (*Properties Design*) is pleased be designing for the first time at Theater Wit. Other Chicago credits include: THE HOLLOW WOMAN (Peninsula Players Theater), FALLEN ANGELS (Remy Bumpo Theatre), TREASURE ISLAND (Lookingglass Theater), MOBY DICK (Lookingglass Theater), ALICE (Lookingglass Theater), BALM IN GILEAD (Griffin Theater), THE SWEETER OPTION (Strawdog Theater), THE APPLE FAMILY PLAYS (Timeline Theater), VELVETEEN RABBIT (Lifeline Theater), TIN WOMAN (Peninsula Players Theater).

Amanda is a graduate of Ripon College with a BA in Theater and Art.

**ETHAN DEPPE** (*Sound Design/Composer*) Chicago credits include: MILLION DOLLAR QUARTET (Chicago/1st National Tour); THE TEMPEST, RIDE THE CYCLONE, SENSE AND SENSIBILITY, SHREK, SUNDAY IN THE PARK WITH GEORGE, FOLLIES, and SHORT SHAKESPEARE! TWELFTH NIGHT (Chicago Shakespeare Theater); WEST SIDE STORY, OKLAHOMA!, LES MISERABLES, and IN THE HEIGHTS (Paramount); BYE BYE BIRDIE, CAMELOT, and ...SPELLING BEE (Drury Lane); EVITA (Marriott Lincolnshire); WOMEN ON THE VERGE..., and DIRTY ROTTEN SCOUNDRELS (Theatre at the Center); MR. CHICKEE'S FUNNY MONEY, and A YEAR WITH FROG AND TOAD (Chicago Children's Theater); THE ORIGINAL GREASE (American Theatre Company); CATS (Theo Ubique); TITANIC (Griffin Theatre); HOW TO SUCCEED... (Porchlight Music Theatre); SEE WHAT I WANNA SEE, and PARADE (Bailiwick)

**WILLIAM SIDNEY PARKER** (*Assistant Director*) is an Associate Artistic Director of SMC, Shakespeare's Motley Crew. Previous work there includes TWELFTH NIGHT, TITUS ANDRONICUS, WHITE DEVIL, DUCHESS OF MALFI, KING JOHN, CYMBELINE, and THE COARSE ACTING SHOW, and he has just completed directing its MIDSUMMER MAYHEM 2016. He first worked with Jeremy on HENRY VI, BLOOD OF A NATION.

**MAJEL CUZA** (*Production Manager*) is also Theater Wit's bar manager in addition to production managing all their shows. The two jobs meld well as she just keeps her designers happy with alcohol. Don't worry though - there is no drinking allowed in the assembly, installation, and operation of some of what you are about to see. When she is not production managing/enabling at Wit, she is a freelance production manager and director around Chicago. Recent credits THE NEW SINCERITY, THE SANTALAND DIARIES- 2014 and 2015, THE (CURIOUS CASE OF THE) WATSON INTELLIGENCE, BAD JEWS, MR. BURNS, SEVEN HOMELESS MAMMOTHS WANDER NEW ENGLAND - Chicago and Las Vegas, and MYTHICAL PROPORTIONS (Theater Wit); BAT BOY, LONDON WALL, THE BIRDS, BALM IN GILEAD, TITANIC, MEN SHOULD

WEEP, THE 25TH ANNUAL PUTNAM COUNTY SPELLING BEE, THE BURNT PART BOYS (Griffin Theatre); WASTWATER (Steep); STICK FLY, END DAYS (Windy City Playhouse); 5 LESBIANS EATING A QUICHE (Chicago Commercial Collective). Majel is prone to sarcasm, saying what she thinks will keep those around her happy when she isn't crushing their dreams, and only occasionally filtering her thoughts. She believes you should visit the Theater Wit bar now and really enjoy the show.

**KATRINA HERRMANN** (*Stage Manager*) is happy to be working with Theater Wit for the first time. Chicago credits include: MARY PAGE MARLOWE, SPARE CHANGE, LADY MADELINE (Steppenwolf), KILL FLOOR, THE ROYALE, SONS OF THE PROPHET (American Theater Company), JUNO (TimeLine Theatre Company), COLE PORTER'S GREATEST HITS, GERSHWIN'S GREATEST HITS (Light Opera Works), TWELFTH NIGHT (Oak Park Festival Theatre). New York credits include: THE FLICK (Barrow Street Theatre), THE FLICK, THE WHALE, THE BIG MEAL, COMPLETENESS, THE SHAGGS: PHILOSOPHY OF THE WORLD, KIN, THE BURNT PART BOYS, CIRCLE MIRROR TRANSFORMATION (Playwrights Horizons); CLOSE UP SPACE (Manhattan Theatre Club); IN THE WAKE (The Public Theater). During the holidays, she works for Santa Claus at Macy's.

**SHANNON ROURKE** (*Assistant Stage Manager*) is thrilled to be working with Theater Wit for the first time. She recently graduated from St. Ambrose University with a BA in theatre and history. Shannon is a graduate of Niles North High School ('12) and very happy to be back home! Chicago Credits: MEN SHOULD WEEP (2015 Jeff Award- Best Production), THE BIRDS (Griffin). She won the 2016 National Stage Management Fellowship for Region V at the Kennedy Center American College Theatre Festival. This past spring, she attended the National Festival in Washington DC at the Kennedy Center. She also received the Rick Koehler outstanding senior award from the theatre department faculty at St. Ambrose. Go Bees!

**CLARE COONEY** (*Casting*) is the Casting Director for Theater Wit. She also does casting for independent films, web series, and theater projects in Chicago, and freelance work for the ladies of PR Casting. Her most recent casting project was the feature film MERCURY IN RETROGRADE. Clare is also an actor--this fall she'll be appearing in Tom Stoppard's PIRANDELLO'S HENRY IV with Remy Bumpo. Most recently she appeared in Dashnight Productions' CHOPS, and has performed with Chicago companies such as Chicago Dramatists, Northlight Theatre, Theater Wit, and Redtwist Theatre. Clare is proud to be a graduate of The School at Steppenwolf Class of 2012, a graduate of The University of Notre Dame, and a Detroit native. She is represented by Gray Talent Group.

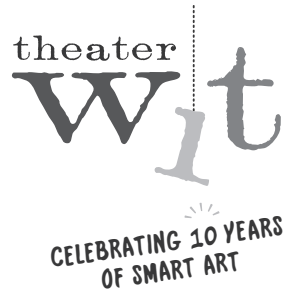


swipe it. scroll it. tap it.

**FOOTLIGHTS.COM**

(now mobile friendly)





## At Theater Wit

We are a theater company within a building, within a community, within a world.

As a production company, Theater Wit's mission is to be the premier "smart art" theater in Chicago by producing humorous, challenging, and intelligent plays that speak with a contemporary theatrical voice.

As an institution, Theater Wit seeks to be the hub of the Chicago neighborhood theater scene. In our three spaces, we bring together Chicago's best storefront theater companies. Here you will find a smorgasbord of excellent productions, see the work of a parade of talented artists, and mingle with audiences from all over Chicago.

## In the Middle of a Community

Everyone here: folks in the audience... the person who handed you this program... somewhere on or off the stage there are actors... if you look up in the corner you might get a glimpse of the stage manager in the booth... We're all in this room for the same reason: to be a part of this shared experience. No matter who they are or where they come from; no matter if they are complete strangers or familiar faces; no matter how different the age, the race, or the walk of life; after this performance, you will have something in common. So, strike up a conversation in the lobby, introduce yourself to someone new. Meet our staff, shake hands with an actor, get a drink from our bar. We're all in this together.

## Part of the Chicago Scene

Theater is part of the Chicago experience. Each year, over 200 theaters present thousands of shows to Chicago's loyal and enthusiastic theater-going audience. Chicago's theater community is recognized around the world for its talent, its innovation and its power to entertain and enlighten. If Tony awards were sports championships, our artists would beat out the combined efforts of Michael Jordan, Bobby Hull, Jim McMahon, Jermaine Dye, and the entire Chicago Cubs roster going back 100 years. This stage is a Chicago stage, contributing to the vibrant artistic life of our city and the economic development of our neighborhood. Very few cities on the planet offer the theatrical richness and diversity of Chicago. But you get to share in it. Because you are here.



*ANY TIME  
ANY SHOW  
AS OFTEN AS YOU  
LIKE*

## FLEXPASS

10 tickets for \$215

- See anything in the building at a dramatically reduced price.
- See 10 shows, go on 5 dates, or just bring your 9 closest friends with you to one show.
- After ordering, you get a card in the mail within a week with your Flexpass code which can be used online, over the phone or at the box office

## THEATER WIT MEMBERSHIP

\$36/month

See any play in our building, any time, as often as you like for one flat monthly fee.

Reserve a ticket for any production in our facility. Do it in advance or just drop by on impulse.

Free ticket exchanges and replacement tickets.

Attend as many different shows as you want each month. Come once, twice or five times a week at no additional charge.

No initiation or startup fee, but members must agree to a three-month minimum.

Twice a year, bring a friend for free.

Great deals at local businesses!

GIORDANO'S • THE BAGEL • CHEESIES •  
CHICAGO BAGEL AUTHORITY • FLAT TOP  
GRILL • CRISP • LOOSELEAF LOUNGE •  
MATILDA'S WINE STYLES • SOMETHING  
OLD, SOMETHING NEW • ACCELERATED  
REHABILITATION CENTERS • AROUND THE  
WORLD TOBACCO • SUBURBAN SECRETS •  
WITT'S • BOURGEOIS PIG CAFE



# THEATER WIT STAFF

# YOU ARE HERE WITH US

## BOARD OF DIRECTORS

*KATHRYN STIEBER*  
President

*PAUL DANAO*  
Vice-President

*CHARLES HORNEWER*  
Treasurer

*NEAL SMYTH*  
Secretary

*PENNY BROWN*  
*CHRIS COMERFORD*

*ROGER DANIEL*

*BRETT GITSKIN*

*DAVID MAHVI*

*ALICIA SENIOR-SAYWELL*

*BRUCE WECHSLER*

*DOUG WEINBERG*

## STAFF

*JEREMY WECHSLER* – Artistic  
Director

*DAVID WECHSLER* – Company  
Manager

*ELIZABETH LOVELADY* –  
Development Coordinator

*JOSH NORDMARK* – Office Manager

*MAJEL CUZA* – Bar Manager/  
Production Manager

*KRISTOF JANEZIC* – Facilities  
Manager

*CLARE COONEY, REBECCA FLORES,*  
*SARAH LUSE, JACKELYN NORMAND*  
– Bar

*ALEXA ULRICH, EVAN BELL, MADDIE*  
*SACHS* – House Management

*JAY KELLY, L.C. WILLIAMS & ASSOCS*  
– Press Relations

## E-NEWS

Stay up to date on all the happenings at Theater Wit. Sign up for our e-newsletter. Get the latest info on show openings and schedules; eavesdrop on production gossip and artistic plans; see behind-the-scenes photos.

- Get a free piece of chocolate when you fill out a mailing list insert and give to any bartender, usher or house manager.
- Sign up online at [theaterwit.org/join](http://theaterwit.org/join)
- Mailings twice per month. We don't deluge you with messages and we don't sell your name to other lists.

Facebook: [facebook.com/theaterwit](https://facebook.com/theaterwit)

## DONATE

Theater Wit is a 501(c)(3) organization. Your tax-deductible donation supports Theater Wit and supports this building in its role as an artistic home for Chicago's best storefront theaters.

- Donate online at [theaterwit.org/donate](http://theaterwit.org/donate)
- Make an instant donation at the box office, the bar, or with our house manager.
- Donate your time and talents! Theater Wit welcomes volunteers for office work, community outreach, building improvements and special events.

# COCKTAILS at the THEATER WIT BAR

## *Spicy*

### **BIBI, VIDI, VICI**

*Mezcales de Leyenda Guerrero, Blaum Bros Hellfyre, Koval Ginger, Fresh Lemon, Cinnamon*

### **KRISTOF'S LIFTOFF**

*1921 Aged Tequila, Blaum Bros Hellfyre, Roses Lime, Combier Triple Sec, Cranberry Juice*

### **THE LUSE CANNON**

*Blaum Bros Hellfyre, Sparkling Pompelmo, Roses Lime, Vermut*

### **TO MAJEL AND BACK**

*Blaum Bros Hellfyre, Roses Lime, Sparkling Clementina*

---

## *Creamy*

### **LOVE BE A LADY**

*Coffee, Shipwreck Coffee Rum, Baileys, Jameson*

### **MERRY CHRISTMAS**

*Frangelico, Shipwreck Coffee Rum, Cream, Honey*

### **MILKY WAY**

*Coffee, Shipwreck Coconut Cream, Bicerin Chocolate Liqueur, Frangelico*

### **NO REFUNDS, NO EXCHANGES**

*Rumchata, Shipwreck Coconut Rum*

## *Boozy*

### **CHOCOLATÉ CAKE**

*Frangelico, Belvedere Vodka, Koval Walnut Liqueur*

### **IF I WERE A GINGER**

*Koval Bourbon, Koval Ginger, Ginger Beer*

### **MIKEY'S MOONSHINE**

*Tailwinds Rum, 1921 Silver Tequila, Koval Gin, Belvedere Vodka, Combier Triple Sec, Tonic, Sprite*

### **MOLLY'S MARK**

*Makers Mark, Chartreuse, Ginger Ale*

### **THE LAKEVIEW**

*1776 Rye Whiskey, Spirit Works Sloe Gin, Orange Bitters*

### **THE NORDMARK 21**

*Belvedere Vodka and Koval Ginger*

---

## *Raggle-taggle*

### **JEREMY'S LAST WORD**

*North Shore #6 Gin, Chartreuse, Drambuie, Fresh Lime*

### **EAU DE CLARE**

*North Shore #6 Gin, Cava, Fresh Lime*

### **TIM'S TOTALLY ADULT WHISKEY SOUR**

*Jameson, Spirit Works Sloe Gin, Belvedere Citrus Vodka, Roses Lime*

# FERMENTED

## Citrus

### MAJELITA

1921 Silver Tequila, Combiar Triple Sec,  
Roses Lime, Fresh Lemon

### MOSCOW MULE

Belvedere Vodka, Ginger Beer, Fresh Lime

### OLD FASHIONED

Fresh Lemon, Koval Bourbon, Orange  
Bitters

### THE MIKEY LAIRD

Koval Oat Whiskey, Sparkling Pompelmo,  
Luxardo Maraschino

### THE MUSCLE CAR

Tesseron Cognac, Combiar Triple Sec,  
Sparkling Limonata, Orange Bitters

### TIM'S TOTALLY MACHO GIRLY DRINK

Belvedere Vodka, Koval Orange Blossom,  
Orange Juice

### REBECCA'S FLORAPOLITAN

Belvedere Citrus Vodka, Combiar Triple  
Sec, Sparkling Aranciata Rossa

### WICKED JAIQUIRI

Shipwreck Spiced Rum, Combiar Triple Sec,  
Fresh Lime, Pineapple Juice

Libations or concessions purchased at the  
bar are always allowed in the theater.

## Wine

### WHITE

Domaine Chanson Viré-Clessé  
CHARDONNAY

Max Reserva

SAUVIGNON BLANC

### RED

Klinker Brick Old Vine  
RED ZINFANDEL

Chateau du Caillau  
MALBEC

### BUBBLES

Jansz BRUT Rose

JCB no. 21 Cremen de BOURGOGNE

## Beer

Ale Syndicate · Paulina Wit · WIT BEER  
Bell's Amber · AMBER

Jolly Pumpkin · Oro De Calabaza  
BIERE DE GARDE

Ale Syndicate · Richie Porter · PORTER  
Bell's Oatsmobile · PALE ALE

Omission Lager · LAGER (gluten free!)  
Bell's Two Hearted IPA · IPA

Ommegang 3 Philosophers ·  
BELGIAN QUAD

3 Sheeps · Cashmere Hammer NITRO

**INSTITUTIONAL SUPPORTERS**

Theater Wit is proud to recognize the corporations, foundations and government entities that generously support our general operations and productions.

**\$25,000+**

MacArthur Fund for Arts and Culture at Prince

**\$10,000- \$25,000**

Gaylord and Dorothy Donnelley Foundation  
John D. and Catherine T. MacArthur Foundation  
Illinois Arts Council Agency  
The Shubert Foundation

**Under \$10,000**

Actor's Equity Foundation  
Elizabeth F. Cheney Foundation  
The Saints Volunteers for the Performing Arts

**EMPLOYER MATCHING GIFTS**

BP Foundation  
The GE Foundation  
Goldman Sachs  
PepsiCo  
Salesforce Foundation

**INDIVIDUAL DONORS**

We are honored to receive the support of the following individual donors and family foundations. This recognizes gifts received between July 2015 and July 2016.

**LEADERSHIP CIRCLE (\$5,000+)**

The Negaunee Foundation  
Bruce and Sandra Wechsler

**FOUNDERS CIRCLE (\$1,000- 4,999)**

Anonymous • Russell and Courtenay Ainsworth • August Bechtner • Edgar Bachrach • John and Judy Bross • Chris Comerford and Virginia Kim • Carol K. and Daniel R. Cyganowski • Paul Danao and Deanna Conklin-Danao • Roger and Abby Daniel • Hornewer Law Firm • Mimi Fitzgerald • Brett Gitskin • Todd and Brandy Goldberg • David Mahvi • Bryan McCarthy and Todd VonBastiaans • Jeffrey and Mona Morris  
Audrey Davis and Art Murphy of Urban Real Estate Research • Jeffrey Rappin and Penny Brown • Gabriel and Dorit Raviv • Jason Ries, Karen Krolak and kwaq7aj • Diana and Richard Senior • Kathy Stieber • Neal Smyth and Martha Christensen

**DIRECTORS CIRCLE (\$500- 999)**

Anonymous • Perry Grimaldi • Shauna and Karl Peet • Susie and Rick Rieser • Karen and Frank Schneider • Eric Slauter

**PERFORMANCE CIRCLE (\$250- 499)**

Anonymous (2) • Mrs. John J. Bransfield, Jr. • Arnold and Susan Flank • Jeff and Heather Fleitz • Jean Klingenstein • Gregory Knapp • Antonia and David Mason • Elaine Newquist • Lennie Rose Pressman • Roche Schuler and Mary Beth Fisher • Donald and Victoria Scott • Carol Senderowitz • Alden and Kristen Senior • George and Lynne Simon • Milan Vydareny • Lali and Ian Watt

**ARTISTS CIRCLE (\$100- 249)**

Anonymous • Andria and Glenn Anderson • Nancy S Bishop • Vic Blakemore • Phillip and Judith Block • Sean Chandler • Dr. Alan and Hedy Daniel • Dr. Harris Feldman • Dr. and Mrs. Anthony G FINDER • Kathleen Fischer • Laura Fisher and Don Copper • Elfie Freudenthaller • Madeleine George • Ethel and Bill Gofen • Chris Hannafan • Dorothy G Harza • Cara Beth Heath • Allen Hintz • John Holleman • Jean Hornewer • Nuhad Jamal • Janis & John Notz • Veronika Kubski • Gaby and Chuck Kuhn • Michael Leppen • Karen and Bob Lewis • Chuck and Fran Licht • Jan and Jerome Loew • Carol and Sam Lovelady • Mark McPherson • Gordon and Nancy Meyer • Martin and Chava Mozes • Michael and Drina Nadler in Honor of Elizabeth Lovelady's Marriage • Erika

Napoletano • Charlotte Newfield • Janis and John Notz • Mark E Penzien • Timothy Poplin and Liz Haas • Jerry Proffitt • Ron and Adrienne L. Rovin • Jack Rubin and Pat Yazuwa • Christopher and Ann Marie Saternus • Erin Schwartz • Sharon Seeder • Alicia and Phil Senior-Saywell • James Simon and Andra Velis Simon • James and Jessica Turner • Melody Wechsler • Rinda West Designs • Lisa and Randy White • Janice Witzel • Louise Zarrow • Charlotte Ziporyn

**WIT CLUB (\$1-99)**

Anonymous • Rebecca Anderson • Jayne Baldwin  
Helen Bant • Peter Baranowski • Russell Barefield • Jairus Bellamy • Maia Benson • Rachel Birnbaum • Anna Blackburn • Nichole Blahnik • Hannah Blase • Michael Blatter • Debbie Boton • Evelyn Bottando • Edith Brownman • Janet Burroway • Nora Bushman • Richard Byrkit • Ben Cachapero • Karen Callaway • Megan Carney • Jan Caruso • Charles Cavallo in honor of Neal Smyth • Petya Chalakova • Candace Chesler • Mario J Coletta • Rachel and Timothy Comar • Andrea Conant • Helene Connolly • Darwin Corrin • Deborah Craft • Lola Craig • Marie Crump • Susan Curran • Serg Cvetkovic • Michal Czopczyk • JoAnna Daryanani • Therese Dean-Myrda • Chelsea DeBaise • Rachel Deming • Jill Devaney • Lisa Disch • Louis C Dolmon • Drower Family • Greer DuBois • David Dumitru • Catherine Dvorak • Laurie Suomala and John Eflers • Abraham Epton • Milton Esbitt • Bert Fox • Stephanie Free • Roxann Bragg Fromm • Joey G • Dileep Gangolli • Sam Giarratano • Keith E. Giles • Lisa Ginet • David Gitomer • Patrick Goldman • Barry Golin • Olga Gonzalez • Dianne E Goren • Joe Gracia • Michael Graham • Annemarie Gramm • Daniel Grey • Toni Gutierrez • Agnes Hamos • Brandi Hampton • Anne Hanley and Joe Woods • Nina Heiser • Angelina Heisler • Walter Henebry • Kayla Higgins • Micah J Higgins • Harold Hirsch • Cynthia Ho • Lois and James Hobart • Rochelle Hochman • Eric and Linda Hochstein • Joan Hoese • Mark Holt • Melissa Hubbert • Patricia Hunt • Bethany Irvin • Myra Iwagami • Paul Jacobs • Harold Jaffe • John Jay • Kristal Juarez • Mary C Kaelin • Melvin Kahn • Diane Kaminski • Richard Kasemsarn • Stephen Katz • DeWitt Kavanagh • Eileen Kelly • Jay Kelly & Alicia Gonzalez • Shannon Kirby • Allan & Tanya Klasser • Christopher Knorr • Jean Marie and Robert Koon • Deborah Kot • Sarah Kover • Chris Kozak • Elizabeth Kristoff • Christopher Lafferty • Mayra S Lagunas • Melissa Lampl • Mary M Lane • Anne Marie Laures • Christopher Leap • Robert Lehman • Blake Levinson • Peiyu Lin • Janice Linn • Rebecca Lown • Connor Lush • Selette MacMerland • Barbara Massey • Thomas & Catherine Mataloni • Matty May • Carol Mayer • John McGloin • Caroline McKee • Lyla Meinhardt • Erica L Melman • Matt Mento • Lynn Merel • Jason Merrill • Jack Migdal • Krzysztof Mikulski • Shawn Miller • Jeri K Mlakar • Carolyn Moriarty • Amy Morton • Kristin N Mount • Dawn Nielsen • John and Sami Nordmark • Mara L Notbusch • Katherine O'Brien • Christina Olson • James Orr • Jay Owen • Nolan John Padgett • Judy Palmer • Na Hyun Park • John Pawlikowski • Carlos I. Perez • Lauralyn Persson • Stephen Petersen • Donald Pier • Sigmund Pincus • Scott Podraza • Felice G. Pomierski • Donald Potter • Deborah Quazzo • Alexander Ramos • Thomas and Donna Ray • Georgene Reschke • Julia Reticter-Phyn • Peter Thomas Ricci • Kristine Rice • Anthony Roberts • Bernard Rodgers • Mercedes Rohlfis • Jorge Rojas • Emily Rosenbaum • John Rourke • Jack Rubin • Charles Russell • Connie Sabin • Laura Sachs • Lynne Samuels • Carol and Paul Sanders • Wilton Sanders • Kyle Schauenberg • Transformations by Rori • Justin Schmandt • Peter Shearn • Martin Silva • Rani Silvert • June Sinson • Richard Skolly • William Smilie in honor of Jeff Trainor • Jane Smith • Deanna Snow • Theresa Sofianos • Ryan Staley • Sue Stanley • Elaine J. Starinichak • Julia Steffen • H Ann Stelmach • Victoria Sterling • Barry Stern • James Sticca • Jennifer W Stratman • Mary Strupeck • Dr. and Mrs. Arnold Sutker • Lindsey Thompson • Taylor Tolleson • Steve Anton • Mike Turner • James Ulwicz • Daniel van Gool • Danica Vendiola • Karen Verlaque • Caroline K. Vickrey • Jonathan Vogel • Randy Vreeland • Jennifer Howard • Malachy Walsh • Karen Walters • Aaron Wardrip • Allison Weathers • Eleanor Weiss Zoub • Timothy J Wilcox • Brian E Wilson • Linda Wilson • Bobbe Wolf • Jennifer Wolf • Lance Wolfe • Mel Wolff • Cara Young • Robert Zentner • Karen and Jack Zibell • Mark Zumbach