



the gift theatre

Proudly Presents...

A LIFE EXTRA ORDINARY

Written by
Melissa Ross



Directed by
Gift Ensemble Member
John Gawlik

ASSISTANT DIRECTOR
Phoebe Sullivan-Bing

SCENIC DESIGNER
Sarah JHP Watkins

LIGHTING DESIGNER
Daniel Friedman

COSTUME DESIGNER
Alarie Hammock

SCENIC ARTIST
Elyse Balogh

**ORIGINAL MUSIC
& SOUND DESIGNER**
** Christopher Kriz

PROPERTIES MASTER
Rita Thornton

PROJECTIONS DESIGNER
Smooch Medina

**STAGE MANAGER &
PRODUCTION MANAGER**
* Sarah Luse

MASTER ELECTRICIAN
David Trudeau

TECHNICAL DIRECTOR
David Preis

*Member of Actors' Equity Association, the union of professional actors and stage managers
** Member of United Scenic Artists • Local USA 829 • IATSE

September 29 - November 20, 2016

The Gift Theatre Company
4802 N. Milwaukee Avenue, Chicago, IL 60630
(773) 283-7071 | www.thegifttheatre.org
"Come Closer."

The Gift Theatre Company's 2016 season is made possible, in part, by generous contributions from Greg and Anne Tauberneck, The Alphawood Foundation, The Rabb Family Foundation, The Richard H. Driehaus Foundation, The Gaylord and Dorothy Donnelley Foundation, an Anonymous Donor, The SaintsSM, William Petersen & Gina Cirone and The Rehabilitation Institute of Chicago (RIC).

A Life Extra Ordinary

FEATURING (IN ALPHABETICAL ORDER)

Annabel..... +Cyd Blakewell
Bill..... +John Kelly Connolly
Tom..... *+Paul D'Addario
Sam..... Rudy Galvan
Polly..... *+Darci Nalepa
Grace..... +Lynda Newton
Jeff..... *+Jay Worthington



*Member of Actors' Equity Association, the union of professional actors
and stage managers
+Indicates Gift Ensemble Member

UNDERSTUDIES

Sam / Jeff.....Brendan Flynn
Annabel / PollyJennifer Glasse
Grace.....Jean Marie Koon
Bill / Tom Christopher Meister

Understudies do not substitute for listed players unless an announcement is made at the time of the performance.

SHOW INFORMATION

PLACE:

A small college town in Ohio near Lake Erie

The play runs approximately 2 hours and 5 minutes.
There will be one 10 minute intermission.

As a courtesy to the actors and fellow audience members, please turn off your cell phone!
Please do not text during the performance. The use of recording devices is strictly prohibited.

PRODUCTION SPONSORS & EXTRA SPECIAL THANKS!

A Life Extra Ordinary is made possible with the support, enthusiasm and more than generous contributions of the following individuals and organizations:

Greg & Anne Taubeneck

**Jaclyn Schmitz & The Hilton Rosemont/Chicago O'Hare:
Proud Sponsor and Home for the Playwrights**

Gannon Graphics, Inc.

"Acting is a particularly thankless art. It dies with the actor. Nothing survives him but the reviews, which do not usually do him justice anyway, whether he is good or bad.

So the only source of satisfaction left to him is the audience's reactions... The actor, in this special process of discipline and self-sacrifice, self-penetration and molding, is not afraid to go beyond all normally acceptable limits...

The actor makes a total gift of himself." -Jerzy Grotowski, *Towards A Poor Theatre*

PRODUCTION, ARTISTIC, & ADMINISTRATIVE STAFF

Artistic Director	Michael Patrick Thornton
Associate Artistic Director	Paul D'Addario
Managing Director / House Manager	Rita Thornton
Administrative Director	John Gawlik
Technical Director	David Preis
Production Manager	Sarah Luse
Casting Director	Enjoy Gavino
Publicist	The Silverman Group, Inc.
Box Office Assistant	Samson Sando
Box Office Staffers	The Gift Ensemble
Graphic Designer	Paul Koob
Photographer	Claire Demos
Playbill Coordinator	Alexandra Main
Production Assistant	Frank Thornton
giftED. Director	Jay Worthington
giftED. Consultant	Lindsey Barlag Thornton
giftFILM Co-Directors	Ed Flynn, Benjamin Montague
Natural Gas Artistic Director	Kyle Zornes
giftLIT. Director	Maggie Gawlik
New Play Development Co-Directors	Maggie Gawlik, Jenny Connell Davis

THE GIFT ENSEMBLE

Daniel Ahlfeld, Cyd Blakewell, Maggie Gawlik, Brittany Burch, Hillary Clemens, Jenny Connell Davis, John Kelly Connolly, Paul D'Addario, Brendan Donaldson, Will Eno, James D. Farruggio, Ed Flynn, Gabriel Franken, John Gawlik, Andrew Hinderaker, Marti Lyons, Alexandra Main, Laura Marks, Kenny Mihlfried, Benjamin Montague, William Nedved, Darci Nalepa, Keith Neagle, Lynda Newton, Sheldon Patinkin (in memoriam), Maureen Payne-Hahner, Mary Ann Thebus, Michael Patrick Thornton, Erica Weiss, Jay Worthington and Kyle Zornes

NATURAL GAS ENSEMBLE

Kieran Fitzgerald, Ed Flynn, James Kozyra, Joey Lesiak, Kirby Longbrake, Eric Muller, Carly Olson, John Pantlind, Michael Patrick Thornton and Kyle Zornes

THE giftED. ENSEMBLE

Jacopo De Marinis, Owen O'Malley, Declan Schliesmann and Symone Rodriguez

THE giftED. ALUMNI

Corbett Baratta, Francesca Plantz and Pat Weber

THE GIFT'S BOARD OF DIRECTORS

Laura Gale (Chair), Paul Botts, John Brahm, Nancy Bowyer, Brittany Burch, Lori Dimun, Bryan Dowling, Shanna Karamaniolas, George Karzas, Sharon Martwick, Naveed Moosa, William Patrick Nedved, Steve O'Brien, Jeff Perry, Quay Tao, Michael Patrick Thornton, Rita Thornton, Michael Valenti and Shannon Wallace



Cyd Blakewell (*Annabel*) is a huge fan of Melissa, Gawlik, this group of actors and most especially The Gift where she is an ensemble member. Past Gift credits include: *Good For Otto*,

Body + Blood, *Broadsword*, *Mine* and *TEN*. Other Chicago Credits: *Balm In Gilead* (Jeff nomination for best supporting actress), *Port* (Griffin); *Between Riverside and Crazy* (U/S - Steppenwolf); *Buddy Cop 2*, *breaks & bikes*, *MilkMilkLemonade* (Pavement Group); *Sweet Confinement*, *Ivanov* (SiNNERMAN Ensemble); *Orange Flower Water* (Interobang); *Lies & Liars*, *Mimesophobia* (Theatre Seven); *Rewind* (The Side Project). Cyd is a graduate of Southwestern University and The School at Steppenwolf and is represented by Grossman & Jack Talent. Thanks forever to my family, my friends and my Keith.



John Kelly Connolly (*Bill*) wants you to know that he saw a cowboy ghost in The Gift Theatre. Truth. I said hello and he went way. Know that he's looked out over the bombed buildings of

World War II Germany from a prison rooftop and dealt with the confusion of who's really the enemy in *Bonhoeffer's Cost* (Provision). Saw the sun rise in negative degree temperatures and made peace with old wounds during the *Royal Society of Antarctica* (The Gift). Felt the pride of England's young brave men and women going off to battle and shared their losses in *Flare Path* (Griffin). Swirled in the nostalgia of youth and the desire to re-live it in a basement in Jersey during *Broadsword* (The Gift). Smelled a turf fire as it heated a moldy Irish home mixed with the burnt plastic odor from a twisted brother hate in *Lonesome West* (The Gift). Watched a young man struggle between his desires and that of a loving father, only to be crushed by life he ultimately achieved in *Golden Boy* (Griffin). And recently saw the confusion in people's eyes as he was trying to

just say "hello" while dealing with the possible death of his only thing that made him feel love, his hamster, in David Rabe's *Good for Otto* (The Gift). Thanks to Melissa for writing this play and sharing your life with us. Thank you Mr. Gawlik for just about everything. Thanks to The Gift ensemble for constantly bringing me the joy! MPT there is only love. Again and again thank you m.a. for listening. Thank you cast! Love to family and friends, whom I'm lucky enough to have so many. Most of all thank you for reading this weird bio. Peace.



Paul D'Addario (*Tom*) is the Associate Artistic Director of The Gift and an ensemble member since 2003. With The Gift he has appeared in over twenty shows. Favorite roles at

The Gift include Pa Joad in *The Grapes of Wrath*, UT Tom in Mat Smart's *The Royal Society of Antarctica*, Satan in *The Last Days of Judas Iscariot*, Eddie in *Hurlyburly* (Jeff Award for Actor in a Leading Role) and Mark in *Thinner than Water* by Melissa Ross. At Steppenwolf he was Tommy in *The Ironbound* and George in *Of Mice and Men*. He has worked at Next and Griffin Theatre and has appeared on *Chicago PD*. Paul is a graduate of The School at Steppenwolf in 2001.



Rudy Galvan (*Sam*) is very pleased to be working with The Gift for the first time. Recent credits include *Our Lady of 121st Street* (Eclipse Theatre), *United Flight 232* (The House Theatre of Chicago),

and *American Buffalo* (Mary-Arrchie Theatre Co.). His work has also been seen at Steppenwolf Theatre Company, Goodman Theatre, Teatro Vista, Collaboraction, Signal Ensemble Theatre, Strawdog Theatre Company, Steep Theatre Co., and Halcyon Theatre. Television credits include *Shameless* and *Chicago Fire*. Rudy is represented by Paonessa Talent.



Darci Nalepa (*Polly*) is extremely grateful to be a part of *A Life Extra Ordinary*. As a proud ensemble member of The Gift, she has appeared on stage here in *Good for Otto*, *Othello*,

Thinner Than Water and *Dirty*. Other Chicago credits include: *Kill Floor* (American Theatre Company); *Yankee Tavern* (American Blues Theater); *Northanger Abbey* (Remy Bumppo); *The Drunken City* (Steppenwolf Theatre – Next Up); *Flare Path, Company* (Griffin Theatre); *Love and Money* (Steep Theatre). Darci appeared in Stephen Cone's Independent Feature Film, *Henry Gamble's Birthday Party*. Television Credits include *Shameless*, *Chicago Fire* and *The Onion*. She is a graduate of The School at Steppenwolf and is an Instructor at Black Box Acting. She is represented by Actors Talent Group. Thank you to John Gawlik, Melissa Ross, MPT, The Gift and you. Yeah. You.



Lynda Newton (*Grace*) arrived in Chicago to study ensemble acting. She stayed to join The Gift. She is thrilled to be working on a second Melissa Ross play, again with John Gawlik

directing. Other productions with The Gift include. *Boys Life*, *Orestes 2.0*, *Language of Angels*, *County Fair*, *Hurlyburly*, *Beauty Queen of Lennane*, *Summer People*, *Absolute Hell*, *Thinner Than Water*, *Royal Society of Antarctica*, *Body + Blood*, *Good for Otto*. Thank you for supporting The Gift.



Jay Worthington (*Jeff*) is grateful and humbled to be working with such a brilliant team on the world premiere of *A Life Extra Ordinary*. A proud ensemble member of The Gift Theatre, Jay's

previous credits at The Gift include: *The Grapes of Wrath*, *Richard III*, the world premiere of David Rabe's *Good for Otto*, the

world premiere of Mat Smart's *The Royal Society of Antarctica*, *Othello*, *Thinner Than Water*, *War of the Worlds*, *Vigils*, *Absolute Hell*, *Cloud 9*, *Night and Her Stars*, the world premiere of Andrew Hinderaker's *Suicide, Incorporated*, and *One Flew Over the Cuckoo's Nest*. Recent work outside The Gift includes shooting a public service announcement for Perkins School for the Blind (as part of the first ever blind awareness social change campaign: BlindNewWorld), shooting a short film: *Soup du Jour* with Recursive Pictures, and a number of workshop readings at The John F. Kennedy Center for their VSA Program (Very Special Arts) which focuses on the disabled experience. Jay was recently the subject of a documentary: *Beyond Sight* by TouchVision, which focused on his life and experience as a visually disabled actor. Jay is also the director of giftedED. (Gift Education) – The Gift Theatre's two year acting sequence for Chicago based high school students – and a teaching artist for Actors Training Center in Wilmette, where he created and runs his own unique three course adult acting sequence. Jay is a proud member of Actors Equity Association and a graduate of The School at Steppenwolf. To those in attendance: bless you, YOU are The Gift. Without you, none of this would be possible.



Brendan Flynn

(*Understudy: Sam/Jeff*) is an actor and director originally from Las Vegas. Past acting credits include *True West*, *Pride and Prejudice*, and *Machinal*. Recent Directing credits:

Superhero (Chicago Fringe); *Our Christian Nation* (Three Brothers Theatre); and assisting at the Paper Mill Playhouse and Carnegie Hall. Brendan is a proud graduate of Northwestern University. Thanks to Emjoy, John, and The Gift.



Jennifer Glasse

(*Understudy: Annabel/Polly*) is thrilled to make her Gift Theatre debut, and is so excited to work with such a special cast and production team! She was

last seen as Lily in *The Book Club Play* (16th Street Theatre). Other Chicago credits include: *The Mutilated* (A Red Orchid Theatre); *Love and Information* (Remy Bumpo Theatre); *Saturday Night/Sunday Morning* (Steppenwolf Garage); *For my Brothers Whenever I May Find Them* (Step Up Productions); *The Mountaintop*, *The Misanthrope*, *Tartuffe* (all u/s Court Theatre); *The North Plan* (Theatre Wit); *Amuse Bouche* (Pavement Group); and *The Darkest Pit* (Prop Theatre). Jennifer received her degree in Musical Theatre from North Central College. She is also a graduate from The Conservatory at Act One Studios and The School at Steppenwolf. Jennifer is the Founder and Artistic Director of Hope 31:9 Theatre Co. (www.hope319theatre.org). She is represented by Gill Hayes Talent. www.jenniferglasssector.com



Jean Marie Koon

(*Understudy: Grace*) recently returned to the stage after a 20 plus year hiatus. She appeared as Carol Berge in *Anna in the Afterlife* (Polarity Ensemble Theatre) and

then as Majorie King in *Pride* Films and Plays production of *Ten Dollar House* at the Piccolo Theatre in Evanston. Since then she has also worked with Theatre Wit, Steep, Jackalope, and Artemisia Theatres and appeared in *Bechdel Fest 3* with Broken Nose Theatre. She is married to actor/playwright Robert Koon, and her daughter, Kelsey, is pursuing a PhD in Archaeology.



Christopher Meister

(*Understudy: Bill/Tom*) is thrilled to be returning to The Gift where he was last seen in *Brief Study of an Endless Thing* (part of The Gift's annual *Ten*).

His other Chicago credits include *Mother Road* and *Stop. Reset* (u/s) at The Goodman Theatre; *The Tennessee Williams Project* and *Death of a Salesman* (The Hypocrites); *Yellow Face* (Silk Road Rising); *Snapshot* (Collaboration); *Under Construction*

(Jackalope Theatre); *Trust* (Lookingglass Theatre - video segments); *Graceland* (Profiles Theatre); and *Geography of a Horse Dreamer* (Mary-Archie Theatre). Regionally, he has appeared in *The Hollow* (Acadia Repertory Theatre); *Desire* (the dirigo group - Austin, TX); *Juno And The Paycock* (Different Stages); and *Scenes From The New World* (John Henry Faulk Liveness Theatre). TV credits include *Sirens*, *Chicago Fire*, *The Playboy Club*, *The Chicago Code*, and the upcoming Fox drama *The Exorcist*. Films include *The Dilemma*, *Warren*, *The Life of David Gale*, *Origins of Wit and Humor*. Thanks to Emjoy, Mike, Sarah, and everyone at The Gift. As always, for Mom and Evie.

Melissa Ross (*Playwright*) Melissa is thrilled and delighted to be back at The Gift for her second collaboration with John Gawlik following 2014's *Thinner Than Water*. Other plays include *You Are Here*, *Do Something Pretty*, *Nice Girl*, and *Of Good Stock*. *Thinner Than Water* and *Nice Girl* were both originally produced by Labyrinth Theater Company and are included in anthologies for the best plays of 2011 and 2015 respectively. *Of Good Stock* received its world premiere at South Coast Repertory as a part of the Pacific Playwrights Festival followed by a subsequent production at Manhattan Theatre Club. Melissa's plays have been developed with The Amoralists, The Cherry Lane Theater, Colt Coeur, Dorset Theater Festival, The Gift Theatre, Iama Theatre Company, The Juilliard School, Labyrinth Theater Company, LCT3, Manhattan Theatre Club, Montana Rep, New York Stage and Film, The New Group, South Coast Repertory, Rattlestick Playwrights Theater, and the TheatreWorks Palo Alto New Works Festival. She is twice commissioned by both South Coast Repertory and Manhattan Theatre Club. Melissa is a graduate of Bennington College and the Lila Acheson Wallace Playwriting Program at The Juilliard School, a two-time winner of the Le Comte de Nouy Prize, and a proud member of Labyrinth Theater Company.

John Gawlik (*Director*) Directing projects include *The Royal Society of Antarctica* and *Thinner Than Water* for The Gift Theatre, *Grounded* for the ETOPiA project at Northwestern University and the Chicago

Premiere of *When the Rain Stops Falling* at Circle Theater (Jeff Award for Director and Production). Love to M and A!

Phoebe Sullivan-Bing (*Assistant Director*) is extremely honored to have been able to make her Gift debut with *A Life Extra Ordinary*. She is familiar with the Chicagoland theatre scene, having worked with Remy Bumpo and American Theatre Company. She is a recent graduate of Ithaca College where she received a BA in Theatre Studies.

Sarah JHP Watkins (*Scenic Designer*) is delighted to be debuting design work at The Gift Theatre for Melissa Ross' *A Life Extra Ordinary*. Her work has also been seen with companies such as Lookingglass Theatre Company, Steppenwolf Garage Theater, Chicago Dramatists, Strawdog Theatre Co, The New Colony, Redtwist Theatre, City Lit Theatre Company, Filament Theatre Ensemble, InFusion Theatre Company, The Music Theatre Company, Step Up Productions, The Wilmette Park District Theatre Program as well as at Grinnell College, Northwestern University, Hope College and Anderson University, among others. She is a company member with Two Pence Theatre Co. as their Resident Scenic Designer and Intern Program Director. Her design work was exhibited at

the 2012 Prague Quadrennial in the Czech Republic. Sarah teaches at Northeastern Illinois University in the Department of Communication, Media and Theatre as an Assistant Professor. Training: MFA in Stage Design for Scenic Design (Northwestern University); BA in Theatre and Studio Art (Hope College). www.sarah-jhp-watkins.com

Elyse Balogh (*Scenic Artist*) is a graduate from DePaul University's Theatre School, with a BFA in Scenic Design. Recently, she designed *The Seedbed* (Redtwist) and *Christina, The Girl King* with Cor Theatre. Recent paint charges include *Ultra American* (Silk Road Rising); *Scarcity* (Redtwist); *The Full Monty* (Peninsula Players); *American Beauty Shop* (Chicago Dramatists); and *The Seagull* (Artistic Home). Upcoming designs: *Dying City* (The Comrades) and *The Legend of Sleepy Hollow* (Mudlark). www.elysebalogh.com

Daniel Friedman (*Lighting Designer*) is thrilled to be returning to The Gift Theatre, having previously assisted on *Good for Otto*. Other Chicago credits include lighting design for *The Realization of Emily Linder*, *The Drawer Boy*, *Incident at Vichy*, *Who's Afraid of Virginia Woolf* (Redtwist Theatre); *Schoolhouse Rock Live!*, *A Charlie Brown Christmas* (Emerald City Theatre); *Snafu* (UIC); *Homo Andronicus* (The



4038 N. Milwaukee Avenue
Chicago, IL 60641
(773) 283-6080

Antidote); *The Importance of Being Earnest* (Oak Park Festival Theatre); and *Hedwig and the Angry Inch* (Haven Theatre); and assistant lighting design on productions at Chicago Shakespeare Theatre, Writers Theatre, Drury Lane Theatre, and Timeline Theatre. Daniel holds a BFA in Lighting Design from DePaul University. Visit danielafridman.com.

Christopher Kriz (*Original Music and Sound Designer*) is a composer and sound designer based in Chicago. Recent Gift Theatre credits: *Grapes Of Wrath* (Jeff Nomination), *Good For Otto*, *Bethany*, and many others. Recent regional credits: *Roz and Ray* (Seattle Repertory Theatre), *Sticky Traps* (Kansas City Repertory Theatre). Recent and upcoming Chicago credits: *The Magic Play* (Goodman Theatre), *Monster* (Steppenwolf Theatre), *Hand To God* (Victory Gardens), *Constellations* (Steppenwolf Theatre), *Carlyle* (Goodman Theatre), *The Columnist* (American Blues Theatre), *The House That Will Not Stand* (Victory Gardens), *Sucker Punch* (Victory Gardens), *Gem Of The Ocean* (Court Theatre), *The Life Of Galileo* (Remy Bumppo) and *Sunset Baby* (Timeline Theatre). Kriz has been honored with 13 Jeff Nominations and 2 Jeff Awards. Recently, Lifeline Theatre produced Kriz's new musical, *Soon I Will Be Invincible*. Kriz is a proud member of United Scenic Artists 829. To hear more of his work, please visit www.christopherkriz.com

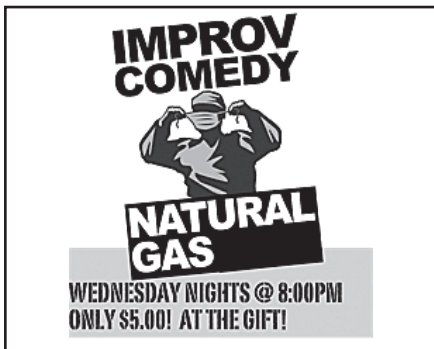
Alarie Hammock (*Costume Designer*) is excited to be back with The Gift Theatre. Her costume design credits include *Grapes of Wrath*, *Royal Society of Antarctica* (The Gift

Theatre); *The Downpour*, *Twist of Water*, *Cicada* (Route 66); *The Bachelors* (Cole Theatre); *Good Person of Szechwan*, *Love and Human Remains*, *Christina the Girl King* (Cor Theatre/ company member); *Fancy Nancy*, *Hansel and Gretel*, *Charlotte's Web* (Emerald City) as well as Emerald City's Little Theater productions. Film credits include *View From Tall*. Enjoy the show!

Smooch Medina (*Projections Designer*) is excited to be working with The Gift Theatre for the first time. Smooch is a Chicago area designer whose credits include projection design for *Estrella Cruz: The Junkyard Queen* (Halcyon Theatre); *The White Road* (Irish Theatre of Chicago); *Tightwire* (Chicago Tap Theatre); lighting design for *A Little World of Our Own* (Irish Theatre of Chicago); and *The Feast* (Red Theatre Company). Smooch holds a BFA in Lighting Design from Columbia College Chicago and you can see his other work by visiting Smoochdesign.com

David Trudeau (*Master Electrician*) David is excited to be working with such talented folks at The Gift. He is an actor, designer, and technician originally from Denver. He has had the honor of working with a wealth of extraordinary people, misty recently at Chicago Shakespeare Theater, Babes With Blades, Chicago Fringe Festival, and E.D.G.E. David would like to thank Daniel for the opportunity to collaborate with him again. Enjoy the show!

Sarah Luse (*Stage Manager / Production Manager*) is excited to be joining The Gift the as production manager for the 2016 season. Some other PM credits include *Women at War* (Rivendell Theatre); *The Dead Prince*, *Half Brothers Mendelssohn*, and *Spirit Play* (Strange Tree); *A Doll's House*, *Fifth of July*, *Escape From Happiness*, *The Crucible* and *The Grapes of Wrath* (Infamous Commonwealth). Recent favorite stage management credits include *Bad Jews*, *Thom Pain*, and *Completeness* (Theater Wit); *TEN*, *Thinner Than Water*, *Bethany*, *Lonesome West*, and *W;t* (The Gift Theatre); and *Bonhoeffer's Cost* and *The Adventures of Captain Marbles and His Acting Squad* (Provision Theatre).



David Preis (*Technical Director*) has contributed his woodworking, general handyman, and all around technical expertise to The Gift since 2002, becoming Technical Director in 2006. He has worked as a luthier for over 35 years – making cellos and basses for Englehardt-Link based in Elk Grove Village. David studied theatre and design at Illinois Wesleyan and has worked as the sound engineer for “The Night Crawlers,” a Chicago area blues band. Throughout the years, he has designed, built, and/or coordinated lighting, set, and sound for a number of Chicago area productions including critically acclaimed productions of *Tango* and *Josephine, The Mouse Singer* both at Chicago Actors Ensemble, *Brick/Walls Open Spaces* for Shakti Dance Company, *Crying Woolf* at Zebra Crossing Theatre, and *Light Up the Sky* at Gurnee Theatre Company.

Enjoy Gavino (*Casting Director*) Chicago acting credits include Court, Northlight, Steppenwolf, Victory Gardens, Remy Bumpo, Paramount, Broadway Playhouse, Lookingglass, The Neo-Futurists, The Goodman and Second City Theatricals. Regional credits: Repertory Actors Theatre, Village Theatre and 5th Avenue Theater. Film/TV: Chicago Med, Empire, Chicago Fire, Mob Doctor, Boss, and Freudian Slip. Enjoy is a company member and teaching artist with Barrel of Monkeys, an ensemble member of Remy Bumpo and is the founder and producer of The Chicago Inclusion Project.

She has been a consultant for casting several projects in the Chicago area since 2012.

Michael Patrick Thornton (*Co-Founder and Artistic Director*) of The Gift Theatre, Michael was recently seen onstage as King Richard in The Gift’s *RICHARD III* at Steppenwolf and in fellow Gift ensemble member Will Eno’s one-man show *Title And Deed* (Lookingglass) directed by Gift ensemble member Marti Lyons. Michael was also seen in the nationally-acclaimed inaugural rolling premiere of fellow Gift ensemble member Andrew Hinderaker’s *Colossal* at Olney Theatre directed by Will Davis; *Othello* at The Gift Theatre (Iago); Actors Theatre of Louisville’s *Our Town*; and the Midwest Premiere of Will Eno’s *Middletown* at Steppenwolf, directed by Les Waters. Michael played the title role in Steppenwolf’s *The Elephant Man* and is a Joseph Jefferson Award-winning actor for Solo Performance in Conor McPherson’s *The Good Thief* (The Gift). Michael recently directed the world premiere of David Rabe’s *Good for Otto* at The Gift. TV/Film: Dr. John Rexroth on FOX’s *The Exorcist*, Dr. Gabriel Fife on ABC’s *Private Practice*, FOX’s *The Chicago Code*, Netflix’s *The Jamz*, Ron Howard’s *The Dilemma*, and the indie film *The View From Tall* by Gift ensemble member Erica Weiss and Caitlin Parrish. He lives blissfully in the Jefferson Park neighborhood of Chicago with his wife, performance artist Lindsey Barlag Thornton.



Hilton
ROSEMONT/CHICAGO O'HARE

THANKS FOR GIVING US A HAND IN MORE WAYS THAN ONE!

The Gift Theatre is tremendously appreciative of all the support we need and receive. We humbly thank the benefactors below for their generous gifts. This list reflects gifts made from January 1, 2012 thru September 6, 2016. A special thanks goes out to our 2016 Season Subscribers – both new and renewing - we couldn't do it without you!

Every effort is made to ensure that the information included in our program is correct. If you have a question or wish to revise your listing in any way, please call 773-283-7071.

Chairman's Cup 2013

George Karzas - Gift Chairman
Rabb Family Foundation
Douglas Brown
Demetrios Kozonis
Coyle Family Foundation
Scott George
Roger & Rita Manka

\$75,000 - \$200,000

Anonymous

\$10,000 - \$74,999

The Alphawood Foundation
Douglas Brown & Rachel Kraft
Dan & Carol Cyganowski
The Gaylord & Dorothy
Donnelley Foundation
The Richard H. Driehaus
Foundation
George Karzas
William Petersen & Gina Cirone
Rabb Family Foundation
Rehabilitation Institute of
Chicago RIC
Tamblernerd Foundation
Greg & Anne Taubeneck
Family Fund at The Chicago
Community Trust
Frank & Rita Thornton
Shannon & Marc Wallace

\$5,000 - \$9,999

The Gale Street Inn
Sol R. Kaufman Family
Foundation
Robin Tennant-Colburn
Tracy Letts
The SaintsSM
Mike & Tina Valenti

\$3,000 - \$4,999

Bob and Suzy Blakewell
John & Gina Brahm
Ryan J. Christoi
Ed & Laura Gale
Maureen Gawlik
Paul Botts & Heather McCowen
Ronald A. Greene Memorial
Fund
Carla Scott

\$1,000 - \$2,999

Mike & Mary Bezanson
Joe Brady III
Brian & Geraldine Donaldson
Ed Flynn
Mark Hudson
Ursula & R. Stanley Johnson
Shanna Karamaniolas
Robert & Sharon Martwick
Michael McGuire
Morris & Helen Messing
Foundation
Naveed & Ellen Moosa
Steve & Nicole O'Brien
Michael & Kay O'Halleran
Jeff Perry
The Portage Restaurant
Gary & Elizabeth Potts
Carrie Schloss
TCF Bank
Quay Tao
Patrick & Kim Weber
Terry & Kathy Xaverius

\$100 - \$999

Allstate Giving Campaign
Fischman Liquors & Tavern –
Natural Gas Sponsor
Fred & Diane Atwill
Dr. Geraldine Balut Coleman
Peggy Bagley
Kimberly Baratta
Robert & Delores Barber
Roland Batten
Gary & Judy Becker
Susan Bowen
John & Jennifer Boylan
Alan Brody
Susan Brown
Erika Bruhm
Brian Buchanan
Jan Burroway
Tracey Burke
Heinz & Marian Busta
Karen Callaway
Marc & Cheryl Carl
Thomas Carroll
Mike & Diane Christoi
John Claxton
Mark & Mary Conley-Teresi
Catherine Cooper

Bruce Davidson
Patricia Donegan
Catherine Dunlap
Will Dunne
Henry & Helen Dwyer
Anne Egan
George & Lucia Economos
Stephen Edfors
Tim & Mary Erdmann
Jennifer & Donald Faliszek
Kim Fazzini
Beth Finke & Michael Knezovich
Larry Fisher & Steve Weiland
Mark & Lyn Fitzgerald
Timothy Fox
Nancy Franken
Paul & Kathy Galvin
Charles Grant
Larry & Pearl Greenstein
Greg George
Gerald & Colleen Greenwood
Marj Halperin & Alan Robinson
Sean Harder
Steve & Lucretia Hardy
Larry & Judy Hicks
Paul & Kathy Hinderaker
Gregory & Janna Holmes
Mary Ittelson
Jim & Pat Johnson
Matthew & Sharon Johnston
BJ & Candace Jones
Jeffrey Jones
Nancy Kaiser
Marissa Kalman
Tom & Maryann Keifer
Vera Kelly
Keith & Katherine Kemp
Molly King
Mitchelle Kmiec
Jeff & Linda Kroll
Brian & Kathleen Laffey
Claire Simon Lasser
Bruce & Mary Leep
Linda Legner
Horace Lottero
Judith Lucas
Ted & Maureen Lucore
Michael and Sharyl Mackey
Kathy Makuh
Eric Markowitz & Kara
Zimmerman

THANKS FOR GIVING US A HAND IN MORE WAYS THAN ONE! CONT.

Guy Massey
Natasha Matza
Bob & Maria McCabe
Nancy McDaniel
Dan & Cathy McHugh
Dan McKearnan
Eric & Jennifer Meyers
Laura Michelini
Laura Miller
Karen Moloney
Rev. Thomas Mulcrone
Patrick & Marietta Mullane
Helen Murray
Catherine Murphy
Michael Muryn
Quintin Nadig
Mike & Nance Nalepa
William Nedved
Roy & Janis Olausson
Kevin & Carmel O'Malley
Mickie Paskal
Norman Patinkin
Pavement Group Legacy Gift
Ronald & Karen Payne
Paul & Gayle Plantz
Patrick Quinn
Alexander Ramos

William Reeder
Robert Rizzo
Justin Roberts
Neal & Denise Robinson
Joshua Rollins
Bill and Maryann Rowe
Tom & Gerrie Ryan
Nathan Schloss
Rosa M. Schloss
Frank & Karen Schneider
Phil Schwartz
Randy & Vicki Sellers
William Shiffman
Signature Bank
Christa-Marie Singleton
Joe & Connal Small
Dr. Joanne & Rory Smith
Donald Sprague & Ray Grant
*to honor Julie Lyons for 30+
years of teaching*
Wendy Stetson
Susan Suchy
Mark Teresi & Mary Conley-
Teresi
Mary Ann Thebus
Randolph & Barbara Thomas
Carol Thompson

Phillip Thompson
Donna Thorman
Timothy Thurlow
Mark Tinker
Fran Tuite
Hollis Turner
Cecilia Tynus
Mike Villannueva
Anne Volz
Edgar Waenke & William Walker
Al & Lorraine Weber
David Westby
Jodi Wickersheimer
Jan Willer
Carol Williams
Jeffrey Winter
Mark & Mary Winter
David Worthington
Christine Ye
James Yost
James & Ellen Zornes

\$1 - \$99
Elynne Chaplik Aleskow
David Alex
Maxinne Arctander
Joakim Backstrom



Gale Street Inn

**A Proud Sponsor of The Gift Theatre Company
4914 North Milwaukee Avenue, Chicago, IL 60630**

773-725-1300

Dinner-Theatre Subscriptions are Available!

Cynthia Baker
 Patricia Barrow
 Rollie Batten
 Barbara Berndt
 Barbara Billhardt & John Palmer
 Elizabeth Birnkrant
 Judith Bishop
 Mary Jo Brown
 Suzanne Brown
 Robert Brueler & Susan Petri
 Stephanie Bruzuy
 William & Catherine Burke
 John Cahill
 Debra Campbell
 Maggie Cantrell
 Lonnie Carter
 Victor Cassidy
 Lois Cichowski
 Kathleen Conneely
 Thomas Cox
 Paul D'Addario
 Leigh Daeuble
 Phillip Dawkins
 Maureen Eisenberg
 Douglas Faulds
 Kirsten Fitzgerald
 Joanne Fleming
 Eric Forsythe
 Robert Franchini
 Angela Franco
 James Frederick
 Sara Gammage
 Deborah Garber
 Lindsey Gasior
 Cindy Gold
 Jesse Gomez
 JoAnn Goodwin
 Tom & Bonnie Graham
 Mary Grimm
 Norma Gulyas
 Ashley Hardgrave
 Boyd Harris
 Steve & Anne Hasselbeck
 Patrick Hayes

Laure Heffernan
 George Hendrix
 Timothy Hughes
 Tom & Suzy Jackson
 Larry Janovsky
 Mary Kazarian
 Michael Knezovich
 Allen Kodish
 Robert Koon
 Wayne Kozikowski
 Jane & Paul Klenc
 Brian & Kathleen Laffey
 Barbara Lanctot
 Richard Landgraaf
 Jennifer Landis
 Ron & Jane Larsen
 Judy Levin
 Mr. & Mrs. Charles Licht
 Robert Lichtenbert
 Kyle & Jamie Liebich
 Scott Allen Luke
 Kathy Makuh
 Clark Maxfield
 Dorothy McCabe
 Barbara McDonagh
 Bill & Donna McGough
 Kathy Metzger
 Kelly Morgan
 George Motto
 Darci Nalepa
 Keith Neagle
 Henrettia Means-Nelson
 Marc & Paula O'Brien
 Sheila O'Connor
 Edward & Margaret O'Farrell
 Elizabeth Okayama
 Gay Olk
 Colleen O'Malley
 Patti Paul
 Lindsey Pearlman
 Michael Pesoli
 Michael Petersen
 Edward Pierson
 Jonathan Pitts

Joann Poplar
 Joan Porat
 Merrill Praeger
 Jody Preston
 Beth Quigley
 Betty Quigley
 Marianne Quinn
 Pat & Ann Riordan
 Kenyatta Rogers
 Cindy Schacher
 Hedwig Schellbach
 Helen Schmit
 Justine Serino
 Christine Simokaitis
 Eva Skowronski
 Mary Smyth
 Doug Soat
 Stephen Spencer
 Donna & Allan Sutow
 Meg Thalken
 Jessica Thebus
 Matthew Tiegler
 Martha Trueheart
 Virginia Wantroba
 Robert Weinstock
 Art & Rosemary Whiteside
 Maria Winter
 Denise Wojcik
 Elizabeth Wooton
 Joseph Zarrow
 Teresa Zhu
 Alan Zunamon

In-Kind

A. Saccone & Sons
 Thomas C. Brennan, CPA & Diane Brennan
 Donald Elmi
 Gannon Graphics, Inc.
 The Gift Ensemble
 Rick Izzi
 Phil & Jenny Schwartz
 Shannon Walker

To our beloved friend &
 fellow ensemble member...

Sheldon Patinkin

WE MISS YOU...

