



**ABOUT
FACE**
THEATRE

theater
Wit

present

The Midwest premiere of

SIGNIFICANT OTHER

By **JOSHUA HARMON**

Directed by **KEIRA FROMM** aft #

FEATURING

ALEX WEISMAN aft*, **NINOS BABA**, **AMANDA DRINKALL***,
TIFFANY OGLESBY, **CASSIDY SLAUGHTER-MASON**,
BENJAMIN SPRUNGER aft, **ANN WHITNEY***

Scenic Design **JEFFREY D. KMIEC+**

Costume Design **NOËL HUNTZINGER**

Lighting Design **JOHN KELLY**

Original Music and Sound Design **CHRISTOPHER KRIZ+**

Props Design **PAULINE OLEKSY**

Master Electrician **JASON LYNCH**

Scenic Painter **JESSIE HOWE**

Scenic Draper **GREG PINSONEAULT**

Choreographer **STEPHEN SCHELLHARDT**

Technical Director **DAVID MORELAND**

Production Manager **CATHERINE ALLEN**

Stage Manager **HELEN LATTYAK***

Assistant Production Manager **MELISSA HUBBERT**

Assistant Stage Manager **ANDREA ENGER**

Publicity **DAVID ROSENBERG PUBLIC RELATIONS**

SDC # Denotes member of Stage Directors and Choreographers Society



* Denotes member of Actors Equity Association

+ Denotes member of USA 829

aft Denotes About Face Theatre Artistic Associate

NOVEMBER 3 – DECEMBER 9, 2017

SIGNIFICANT OTHER runs approximately two
hours with one ten minute intermission

SIGNIFICANT OTHER

By **JOSHUA HARMON**

Directed by **KEIRA FROMM**  #

CAST

ALEX WEISMAN * (Jordan)

NINOS BABA (Zach, Evan, Roger)

AMANDA DRINKALL* (Laura)

TIFFANY OGLESBY (Vanessa)

BENJAMIN SPRUNGER  (Will, Tony, Conrad)

CASSIDY SLAUGHTER-MASON (Kiki)

ANN WHITNEY* (Helene)



*Denotes member of Actors Equity Association

 Denotes About Face Theatre Associate Associate

PRODUCTION STAFF

Scenic Design **JEFFREY D. KMIEC**+

Costume Design **NOËL HUNTZINGER**

Lighting Design **JOHN KELLY**

Original Music and Sound Design **CHRISTOPHER KRIZ**+

Props Design **PAULINE OLEKSY**

Master Electrician **JASON LYNCH**

Scenic Painter **JESSIE HOWE**

Scenic Draper **GREG PINSONEAULT**

Choreographer **STEPHEN SCHELLHARDT**

Technical Director **DAVID MORELAND**

Production Manager **CATHERINE ALLEN**

Stage Manager **HELEN LATTYAK***

Assistant Production Manager **MELISSA HUBBERT**

Assistant Stage Manager **ANDREA ENGER**

Publicity **DAVID ROSENBERG PUBLIC RELATIONS**



*Denotes member of Actors Equity Association

+Denotes member of USA 829

DIRECTOR'S NOTE

"When I'm twenty-eight, I'm going to get married and be very much in love with someone who is poor and fascinating until he's thirty and then fabulously wealthy and very secure after that. And we're going to have children who wear overalls and flannel shirts and are kind and independent, with curly blond hair. And we'll have great sex and still hold hands when we travel to China when we're sixty."

- *Janie Blumberg in Isn't It Romantic by Wendy Wasserstein*

When I first started reading *SIGNIFICANT OTHER*, I was taken with what seemed to be this light-hearted comedy about marriage and friendship. As I continued reading, I found myself crying on my couch overtaken by the simpatico I felt for Jordan Berman, the young gay man at the center of the story who can't seem to find love and has to put on a good face at the bachelorette parties, bridal showers, and wedding events of all of his closest friends.

Having begun my dating life after the normalization of queer culture but before the advent of marriage equality, marriage wasn't something on my horizons and, as a result, I didn't spend a lot of time thinking about it. All of my opinions about marriage were based on early childhood preconceptions, and not rooted in the reality of what marriage might look like for me. So it was very difficult to figure out if it was something I truly wanted, or if it was something I thought I should want. The sad truth is that I appreciated the crutch that being disallowed marriage afforded me in terms of unburdening me from the task of finding love and having tense conversations with my parents about getting married. Once marriage equality passed, however, all my well-intentioned friends and family came out of the woodwork to ask: "when are you getting married?!" No longer was I immune from expectations of marriage. Gone were the simple days of living life absent the awkward conversations about prospective married life. Don't get me wrong, I appreciated the sentiment, and the idea that my nearest and dearests were rooting for my happiness, even if it was starting to feel as though a mandate had been passed.

Being gay often involves a fair amount of alienation, particularly from love. And when finding love and getting married are seen as the pinnacle of social achievement, it's easy to feel like you're failing at life when love is elusive. Particularly so when you're gay and you've grown up in a world reticent to acknowledge gay people as deserving of the basic human right to love. Like Jordan Berman, I spent a lot of sad and lonesome nights in my 20's wondering if I would ever find true love. Loneliness is in many ways is a precondition of the gay experience. And the prospect of marriage, whether it's a near or far concept, magnifies the condition.

I'm grateful that Josh Harmon wrote this play about a gay protagonist, and the joy and terror of looking for love. In the middle of the play Jordan says to his best friend Laura, "I hate being a person. I wish I was a rock, you know? Or anything. A salamander. Dental floss. Rain." I empathize. It's hard being a person. Don't we all have days when we wish we were rocks, or rain?

JEREMY WECHSLER is the Artistic Director of Theater Wit where he has directed the Chicago premieres of *10 out of 12*, *Naperville*, *The New Sincerity*, *The (Curious Case Of The) Watson Intelligence* (Best of 2015 - Sun Times), *Bad Jews* (Best of 2015 - New City), *Mr Burns: A Post-Electric Play* (Time Out Peoples' Choice Award for Direction, Best of 2015), *Seven Homeless Mammoths Wander New England* (Sun Times Best of Year 2014), *Completeness*, *Tigers Be Still*, *This*, *The Four of Us*, *Feydeau-Si-Deau*, *Men of Steel*, *Thom Pain (Based On Nothing)* (Jeff Award - Best Solo Performance), *Two For The Show* and annual favorite *The Santaland Diaries*. Under Jeremy's leadership, Theater Wit has emerged as the go to destination for cutting edge contemporary work, gaining national recognition for excellence. He has directed over sixty shows in the last twenty years at various theaters, including *Tragedy A Tragedy*, *The Flu Season*, *A Taste of Honey* ("US Best of 2008" in The Wall Street Journal), *Now Then Again* (Jeff Award - Best New Work), *The Play About The Squirrel*, *The White Devil*, *This is Not a Play About Cancer*, *Peer Gynt*, *The Real Thing*, *Szin haz*, *The Duchess of Malfi*, *Tragedy a Tragedy*, *Titus Andronicus*, *The Roaring Girl*, *Flight*, *The Most Fabulous Story Every Told*, *This is the Rill Speaking*, *Hay Fever*, *A Month in the Country*, *Europe*, *Henry VI: Blood of a Nation*, *The Promise*, *Spin*, *Un Robot*, *Horror Academy*, *Kind Lady*, *Playing by the Rules*, *The Marriage of Bette and Boo*, *Solitaire*, *The Coarse Acting Show*, *Life is a Dream*, *The Prisoner's Dilemma*, *Cabaret* and *The Threepenny Opera*. His productions have been nominated for and won multiple awards for design, performance, adaptation and best new work.

.....

MEGAN CARNEY — As a founding director of About Face Youth Theatre, Megan's collaborative work with community partners around the city addressed chosen families, identity development, housing instability, and more in celebrated performances that premiered in Chicago and toured around the country. Recent Chicago directing credits include Julie Jenson's *Winter*, George Brant's *Grizzly Mama*, Danielle Pinnock's *Body/Courage* and Lisa Dillman's *American Wee Pie* and *The Walls* with Rivendell Theatre Ensemble. She also co-created *Women at War*, a multi-year performance and civic dialogue project about women in the military that continues to tour.

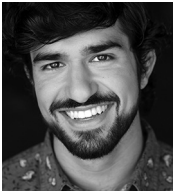
For the past six years she served as the Director of the Gender and Sexuality Center, one of the Centers for Cultural Understanding and Social Change, at the University of Illinois at Chicago where she developed programming to investigate and reveal diverse LGBTQIA+ identities and histories through oral history collection, participatory workshops and a variety of public programs. She has served on the Honorary Board of About Face Theatre, the LGBTQ Giving Council of the Chicago Foundation for Women and with the Chicago Restroom Access Project of Pride Action Tank. Carney's work has been recognized with multiple After Dark Awards, the GLSEN Pathfinder Award, an APA Presidential Citation, induction in Chicago's Gay and Lesbian Hall of Fame, a Rockefeller Foundation MAP Grant and a GLAAD Media Award nomination. She has a MFA in Theatre Arts from Virginia Tech with a focus on Directing and Public Dialogue and a BA from Kalamazoo College where her ideas about art as a tool for social justice and activism began to take shape.

WHO'S WHO IN THE CAST



ALEX WEISMAN (*Jordan*) is a proud About Face Artistic Associate and appeared in last season's *The Temperamentals*. He is also an Associate at TimeLine Theatre where he appeared in *My Name is Asher Lev*, *The Normal Heart* and *The History Boys* for which he received the Jeff Award for Supporting Actor. Other Chicago credits include *Hand to God* (Victory Gardens, Jeff Nomination), *Mary and A Christmas Carol* (Goodman), *The Good Book* (Court Theatre) *Tug of War:*

Foreign Fire, *Short Shakes! Midsummer Night's Dream*, *The Madness of George III* and *Julius Caesar* (Chicago Shakespeare), *Peter Pan* (Lookingglass), *October Sky*, *The Nutcracker* (Marriott), *The Rainmaker* (Jeff Nomination) and *Rough Crossing* (First Folio), and *Ah! Wilderness* (Eclipse, Jeff Nomination) as well as Drury Lane Oakbrook, Remy Bumpo, Porchlight, Chicago Children's Theater and The House. For five seasons, he has appeared as "Chout" on NBC's "Chicago Med," "Chicago Fire" and "Chicago PD" as well as Fox's "Empire". Film Credits include *Black Box*, *Scrooge & Marley*, and the upcoming *The Pages*. Alex is a Stakeholder and performer with The Back Room Shakespeare Project, a NU grad and proud member of AEA. This spring, he will make his Broadway Debut in *Harry Potter and the Cursed Child*. For his "Significant Babe".



NINOS BABA (*Zach, Evan, Roger*) Ninos is honored to be joining the AFT family for a second time. Previous credits include *Miranda* (Indiana Repertory Theatre); *I Am My Own Wife* (About Face Theatre); *King Lear*, *Death of a Salesman*, and *The Comedy of Errors* (American Players Theatre). He holds a BFA from the University of Illinois at Urbana-Champaign. While at school he performed in *The Grapes of Wrath*, 1984, *Oh! What a Lovely War*, *Not About*

Nightingales, and *Much Ado About Nothing*. He'd like to thank his family and friends that have supported his journey so far. Ninos is represented by Stewart Talent.



AMANDA DRINKALL (*Laura*) Chicago credits include: *King Charles III* (Chicago Shakespeare); *Mary Page Marlowe* (Steppenwolf); *Venus in Fur*, *Ah Wilderness*, *Measure for Measure*, *Continuity* (Goodman); *By the Water*, *White Guy on the Bus*, *Funnyman* (Northlight); *Dutchman* (American Blues); *Last Train to Nibroc* (Haven Theatre-Jeff Award, Best Actress); *Rest* (Victory Gardens); *Pygmalion* (Oak Park Festival); *Great Expectations* (Strawdog); *Pride and Prejudice* (Lifeline); *hamlet*

is dead. no gravity, *The Skriker*, *Brand*, *The Love of the Nightingale*, and *Pullman, WA* (Red Tape Theatre); and almost 20 shows with The Back Room Shakespeare Project where she is a Stakeholder including *Othello* (Desdemona), *As You Like It* (Celia), and *Romeo & Juliet* (Tybalt). Regional credits include work with North Carolina & Michigan Shakespeare Festivals. TV credits: *Chicago Med*, the pilot episode of NBC's webseries *Bobby & Iza*. Film credits: *The View From Tall*, which premiered at the LA Film Festival. Ms. Drinkall holds a BFA from the University of Illinois at Urbana-Champaign and is represented by Gray Talent Group.



TIFFANY OGLESBY (Vanessa) originally from Atlanta, GA., recently appeared as “Grace” in Definition Theatre’s production of *An Octoroon*. Other theatre credits include *truth and reconciliation* (Sideshow), *East Texas Hot Links* (u/s Writers), and *A Small Oak Tree Runs Red* (u/s Congo Square). She also had the pleasure of working with other theatre companies including Raven, New Colony, and Lifeline. TV credits include recurring roles on *Chicago Med* and *The Chi*.

She received her BFA in Performing Arts from Savannah College of Art and Design and her MFA in Acting from The Theatre School at DePaul University. Happily exclusive with Grossman and Jack Talent. Love you Mom and Marc!



BENJAMIN SPRUNGER (Will, Tony, Conrad) Theatre credits: About Face (seven productions including *Take Me Out*, *The Homosexuals* and *The Pride*), House, Northlight, 16th Street, Goodman, Victory Gardens, TimeLine, Steppenwolf, Strawdog, Griffin (2011 Jeff nomination, Actor in a Principal Role - Musical), Steep, Haven, CityLit, Mark Taper Forum, and Pasadena Playhouse. Television credits: *Chicago Fire*, *Will & Grace*, and *Passions*. Ben also serves as the Director of

Institutional Giving for About Face.



CASSIDY SLAUGHTER-MASON (Kiki) is a Chicago based actress by way of Portland, OR and is so excited to be working with About Face Theatre and Theatre Wit. Recent theater credits include: *Scapegoat* (New Colony Theatre), *Rapture Blister Burn* (Goodman Theatre, Jeff nominated for supporting actress); *Animal Farm* (u/s Steppenwolf for Young Adults); *Wanda, Daisy & the Great Rapture* (Available Light Theatre); *True West* (Baby Crow Production); and *Miss Julie* (Vintage

Theatre Collective). Cassidy attended the School at Steppenwolf, and is an ensemble member of One Year Chekhov.



ANN WHITNEY (Helene) is working for the first time in an About Face production and is very happy about that. She was last seen at Northlight Theatre in *Relativity* where before that she appeared in *Quilters*, *Driving Miss Daisy* (for which she received the Sarah Siddons Actress of the Year Award), *The Cripple of Inishmaan*, *Grey Gardens* and *Lost In Yonkers*. Other Chicago credits include appearances at Lincolnshire Marriott, Drury Lane Oakbrook, Court, ATC, Next, Steppenwolf

(Jeff award - ensemble), Mercury Theatre, Northwestern University as a guest artist, The Goodman Theatre and Apple Tree. Regional credits include *Wit* (Actors Theatre of Louisville), *Fossils* (Sacramento Theatre Company) which she also performed at Victory Gardens with Julie Harris. Film credits include *Home Alone One*, *The Fugitive*, *Sugar* and *While You Were Sleeping*. Most recent TV credits include *Chicago Fire* and *Chicago Justice*. Many thanks to Eric Masters for his special help.

JOSHUA HARMON’S (Playwright) play *Bad Jews* received its world premiere at Roundabout Underground and was the first production to transfer to the Roundabout’s Laura Pels Theatre (Outer Critics Circle and Lucille Lortel Award nominations, Best Play). It became the third most-produced play in the U.S. during the 2014-15 season and transferred to London’s West End after sell-

out runs at Theatre Royal Bath and the St. James Theatre. His newest play, *Significant Other*, opened at Roundabout this summer. His work has been produced and developed by Manhattan Theatre Club, Williamstown Theatre Festival, Hangar Theatre, Ars Nova, and Actor's Express, where he was the 2010-2011 National New Play Network Playwright-in-Residence. He has received fellowships from MacDowell, Atlantic Center for the Arts, SPACE at Ryder Farm, and the Eudora Welty Foundation. Joshua is a recent graduate of Juilliard and at work on commissions for Roundabout Theatre Company and Lincoln Center Theater.

KEIRA FROMM (Director) is a Jeff Award nominated director, casting director, and teacher based in Chicago. Favorite recent directing credits include: *A Funny Thing Happened on the Way to the Gynecologic Oncology Unit at Memorial Sloan Kettering Cancer Center of New York City* (Route 66 Theatre Company), *Bright Half Life* (About Face Theatre), *The Columnist* (American Blues Theater), *How the World Began* (Rivendell Theatre Ensemble), *A Kid Like Jake* (About Face Theatre), *Luce* (Next Theatre), *Charles Ives Take Me Home* (Strawdog), *The How and the Why* (TimeLine Theatre), *Broadsword* (Gift Theatre), and *Fallow* (Steep Theatre). Keira is a proud Artistic Associate with About Face Theatre. She received her MFA from DePaul University, her BFA from Boston University, is an alumna of the Lincoln Center Theater Directors Lab, and is a member of SDC, the professional directors' union. Keira is a frequent guest director at DePaul as well as Roosevelt University. Next up she will be directing the US premiere of *hang* with Remy Bumpo Theatre.

JEFFREY D. KMIEC (*Scenic Design*) is a Chicago based award winning scenic designer. Local credits include: *Bakersfield Mist* at Timeline Theatre; *Crazy For You*, *Deathtrap* (2016 Jeff Award Recipient) and *The 25th Annual Putnam County Spelling Bee* at Drury Lane Oakbrook; *The Bridges of Madison County*, *She Loves Me*, *Man of La Mancha* at The Marriott Theatre; *Once*, *Elf*, *The Little Mermaid*, *A Christmas Story* and *Les Miserables* (2015 Jeff Award Recipient) at Paramount Theatre; *Butler*, *Funnyman*, and *Tom Jones* at Northlight Theatre; *Marry Me A Little*, *Lady Day at Emerson's Bar and Grill*, *Ain't Misbehavin'*, *Sondheim on Sondheim* at Porchlight Music Theatre; *Dividing the Estate* (Jeff Award Nomination), *A Loss of Roses* (Jeff Award Nomination) and *The Assembled Parties* (Jeff Award Nomination) at Raven Theatre; and *Watch on the Rhine* (Jeff Award Nomination) and *The Seagull* at The Artistic Home. Jeffrey received his MFA from the University of Virginia.

NOËL HUNTZINGER (*Costume Design*) is an artistic associate at Sideshow Theatre Company (where her credits include *Truth and Reconciliation*, *Stupid F**king Bird*, and *Antigonik*). Noël is a resident artist with Filament Theatre (credits include *Van Gogh Café*, *Pinocchio: A Folk Musical*, *Hank Williams Lost Highway*, and others). Noël has designed at The Goodman Theatre (credits include *The Wolves*, *New Stages Festival 2016 and 2017* and *Pamplona*). She has worked extensively with Interrobang Theatre Ensemble (credits include *Still*, *North Pool*, *Pitchfork Disney* and others). Ms. Huntzinger has also designed shows with Lyric Opera Unlimited, Bosie Contemporary Theatre, Muse of Fire, Shattered Globe Theatre, and Collective Theatre Ensemble. In addition to theater, she has designed pieces for choreographers Ginny Sykes (*Bodies of Memory* and *L'incontò*), Wendy Clinard (*Watershed*) and the Antony Tudor Trust (*Fandango*). She wrapped her first full-length film design for *Olympia: An Instruction Manual for Everything in the Summer*. Ms. Huntzinger is from Tulsa, Oklahoma, and is a graduate of Oklahoma University.

JOHN KELLY (*Lighting Designer*) is very excited to be designing for About Face for the third time. Previously he designed lights for *Abraham Lincoln Was a Faggot* and *I Am My Own Wife*. Other companies he has worked with include The Second City, Theatre Wit, Lifeline Theatre Company, The Gift, The Neofuturists, Oracle Theatre, Redtwist Theatre and Eclipse Theatre. His design for *Great Expectations* and *D.O.A.* at Strawdog Theatre and *I Am My Own Wife* at About Face were nominated for Jeff Awards for Outstanding Lighting. John is an ensemble member at Strawdog Theatre Company.
www.johnkellydesigns.com

CHRISTOPHER KRIZ (*Original Music and Sound Design*) is a composer and sound designer based in Chicago. Previous About Face Theatre credits: *Bright Half Life*, *The Temperamentals*, *After All The Terrible Things I Do*, and *A Kid Like Jake*. Some upcoming and recent Chicago credits: *Red Velvet* (Chicago Shakespeare Theatre); *The Magic Play*, *Carlyle* (Goodman Theatre); *Constellations*, *Monster* (Steppenwolf Theatre); *Roz and Ray*, *Hand To God*, *The House That Will Not Stand* (Victory Gardens); *Gem Of The Ocean* (Court Theatre); *Silent Sky*, *Captain Blood*, *Man-Beast* (First Folio Theatre); *Paradise Blue*, *Sunset Baby* (Timeline Theatre); *Born Yesterday*, *Pygmalion*, *The Life Of Galileo* (Remy Bumpo Theatre); *The Columnist* (American Blues Theatre); *A Swell In The Ground*, *Pilgrims*, *A Life Extra Ordinary*, *Good For Otto*, *The Grapes Of Wrath* (The Gift Theatre); *A Funny Thing Happened....*, *The Source* (Route 66 Theatre), *The Heavens Are Hung In Black*, *For Peter Pan On Her 70th Birthday* (Shattered Globe Theatre). Recent regional credits: *Roz and Ray* (Seattle Repertory Theatre), *Sticky Traps* (Kansas City Repertory Theatre) and many summer seasons at Peninsula Players. Kriz has been honored with 14 Jeff Nominations and 3 Jeff Awards. Recently, Lifeline Theatre produced Kriz's new musical, *Soon I Will Be Invincible*. Kriz is a proud member of United Scenic Artists 829. To hear more of his work, please visit www.christopherkriz.com.

PAULINE OLEKSY (*Properties Designer*) is a Chicago based scenic and properties designer from Illinois. She recently earned her Masters of Fine Arts from Northern Illinois University and offers services in corporate and exhibit design, 3D pre-visualization, and properties/scenic design for theatre. She is excited to be making her About Face debut with *Significant Other!*

JASON LYNCH (*Master Electrician*) is a freelance lighting designer and production electrician for theatre, dance and opera and makes his Theater Wit and About Face Theatre debut with this production. He recently completed his fifth season as the Assistant Lighting Director for The Dallas Opera and sixth season on the lighting staff for The Santa Fe Opera. Jason holds a BFA in Theatre Design/Technology from Texas Tech University. You can see more of his work at www.jasonlynch.com. Many thanks to family and friends for their continuous support.

STEPHEN SCHELLHARDT (*Choreographer*) is thrilled to be working with Keira, About Face Theatre and this extraordinary company of artists. He has acted in Equity productions in Chicagoland theatres and regional theatres elsewhere, receiving three Jeff Award nominations and a Barrymore award for acting, as well as a non-equity Jeff Award nomination for his directorial work on *Urinetown* and his choreographic work on *Dogfight* the musical (BoHo Theatre). Stephen has directed and choreographed at Writers Theatre, Timberlake Playhouse, The Summer Theatre of New Canaan, Ars Nova in New York City, Northwestern University, and BoHo Theatre in Chicago, where he

is a company member and Artistic Associate. He is a founding member of the Chicago Artists Chorale, Director of the Winnetka Children's Theatre, and most recently served as the Casting Director and Associate Producer at Writers Theatre in Glencoe. Currently, he spends most of his time in Evanston where he is a lecturer of music theatre at Northwestern University. Stephen is a proud graduate of Carnegie Mellon University's School of Drama.

CATHERINE ALLEN (*Production Manager*) is thrilled to be working with About Face Theatre for the first time. Other production management credits include work with Steep Theatre, Griffin Theatre, Route 66, Congo Square, Actors Gymnasium, Oak Park Festival Theatre, Pegasus Theatre Chicago, Haven Theatre, Chimera Ensemble, A Red Orchid Theatre Youth Ensemble, Pine Box Theater Company, and Step Up Productions where she was an Artistic Associate and resident production manager. She is a graduate of the University of Illinois, Urbana-Champaign, where she received a BFA in Acting.

HELEN COLLEEN LATTYAK (*Stage Manager*) Some of Helen's credits include *A Funny Thing Happened on the Way to Gynecologic Oncology Unit at Memorial Sloan Kettering Cancer Hospital of New York City* with Route 66. *Bright Half Life*, *The Secretaries*, *Le Switch*, *Abe Lincoln Was A Faggot*, and *We Three Lizas* with About Face Theatre. *PICNIC* at American Theater Company. *Sucker Punch*, *SAMSARA* and *Failure: A Love Story* at Victory Gardens Theater. *Christmas at Christine's*, *Ultra American*, *Muthaland* and *The Hundred Flowers Project* at Silk Road Rising, *Brahman/i: A One-Hijra Stand Up Comedy Show* with About Face Theater and Silk Road Rising. Helen is a company member at TUTA Theater Chicago. She is a graduate of Loyola University Chicago and a member of the Actors Equity Association.

MELISSA HUBBERT (*Assistant Production Manager*) is as always, excited to be working with AFT on *Significant Other*. Previously she has worked at About Face as the production manager of *Brave Like Them*, assistant director of *The Temperamentals*, and was an artistic and production intern. Most recently, she closed *Our Town* at Redtwist Theatre. Big thanks to Catherine, Katie, Young, Ryan, Anna, and Ruby, and the whole family back west.

ANDREA ENGER (*Assistant Stage Manager*) is excited to be making her debut with About Face Theatre and Theater Wit on *Significant Other*. Some of her favorite credits include *Picnic* (American Theater Company), *Good Friday* (Oracle Theatre) and *Bars & Measures* (Prop Thtr). She is a graduate of Columbia College Chicago where she production stage managed shows such as *Sequence* and *As You Like It*.

DAVID ROSENBERG (*Publicity*) specializes in public relations campaigns for commercial and non-profit performing arts companies. He currently works with more than 20 Chicago companies including The Hypocrites, About Face Theatre, Griffin, Irish Theatre, Sideshow, New Colony, Hell in a Handbag and others. He previously served as Communication Director for Steppenwolf Theatre and an account supervisor for Broadway In Chicago at Margie Korshak.



At Theater Wit

We are a theater company within a building, within a community, within a world.

As a production company, Theater Wit's mission is to be the premier "smart art" theater in Chicago by producing humorous, challenging, and intelligent plays that speak with a contemporary theatrical voice.

As an institution, Theater Wit seeks to be the hub of the Chicago neighborhood theater scene. In our three spaces, we bring together Chicago's best storefront theater companies. Here you will find a smorgasbord of excellent productions, see the work of a parade of talented artists, and mingle with audiences from all over Chicago.

In the Middle of a Community

Everyone here: folks in the audience... the person who handed you this program... somewhere on or off the stage there are actors... if you look up in the corner you might get a glimpse of the stage manager in the booth... We're all in this room for the same reason: to be a part of this shared experience. No matter who they are or where they come from; no matter if they are complete strangers or familiar faces; no matter how different the age, the race, or the walk of life; after this performance, you will have something in common. So, strike up a conversation in the lobby, introduce yourself to someone new. Meet our staff, shake hands with an actor, get a drink from our bar. We're all in this together.

Part of the Chicago Scene

Theater is part of the Chicago experience. Each year, over 200 theaters present thousands of shows to Chicago's loyal and enthusiastic theater-going audience. Chicago's theater community is recognized around the world for its talent, its innovation and its power to entertain and enlighten. If Tony awards were sports championships, our artists would beat out the combined efforts of Michael Jordan, Bobby Hull, Jim McMahon, Jermaine Dye, and the entire Chicago Cubs roster going back 100 years. This stage is a Chicago stage, contributing to the vibrant artistic life of our city and the economic development of our neighborhood. Very few cities on the planet offer the theatrical richness and diversity of Chicago. But you get to share in it. Because you are here.



*ANY TIME
ANY SHOW
AS OFTEN AS YOU LIKE*

.....

THEATER WIT MEMBERSHIP

\$29/month

.....

.....

FLEXPASS

10 tickets for \$225

.....

- See anything in the building at a dramatically reduced price.
- See 10 shows, go on 5 dates, or just bring your 9 closest friends with you to one show.
- After ordering, you get a card in the mail within a week with your Flexpass code which can be used online, over the phone or at the box office

See any play in our building, any time, as often as you like for one flat monthly fee.

Reserve a ticket for any production in our facility. Do it in advance or just drop by on impulse.

Free ticket exchanges and replacement tickets.

Attend as many different shows as you want each month. Come once, twice or five times a week at no additional charge.

No initiation or startup fee, but members must agree to a three-month minimum.

Twice a year, bring a friend for free.

Great deals at local businesses!

GIORDANO'S • THE BAGEL • CHEESIES • CHICAGO BAGEL AUTHORITY • FLAT TOP GRILL • CRISP • LOOSELEAF LOUNGE • MATILDA'S WINE STYLES • SOMETHING OLD, SOMETHING NEW • ACCELERATED REHABILITATION CENTERS • AROUND THE WORLD TOBACCO • SUBURBAN SECRETS • WITT'S • BOURGEOIS PIG CAFE

THEATER WIT STAFF

YOU ARE HERE WITH US

BOARD OF DIRECTORS

KATHRYN STIEBER
President

PAUL DANA O
Vice-President

CHARLES HORNEWER
Treasurer

NEAL SMYTH
Secretary

ROGER DANIEL
BRETT GITSKIN
DAVID MAHVI
ROCHE SCHULFER
BRUCE WECHSLER

STAFF

JEREMY WECHSLER – *Artistic Director*

DAVID WECHSLER – *Company Manager*

JOSH NORDMARK – *Office Manager*

BEN GRAY – *Development*

ALEXA ULRICH – *Front of House Manager*

NEAL JAVENKOSKI – *Facilities Manager*

NORA RUBENSTONE – *Production Manager*

CLARE COONEY – *Casting*

REBECCA FLORES, RICHARD EISLOEFFEL,
SARAH LUSE, JACKELYN NORMAND – *Bar*

EVAN BELL, MADDIE SACHS –
House Management

JYREIKA GUEST, CORRINE GLANVILLE,
ANNALEA BELL – *Box Office*

E-NEWS

Stay up to date on all the happenings at Theater Wit. Sign up for our e-newsletter. Get the latest info on show openings and schedules; eavesdrop on production gossip and artistic plans; see behind-the-scenes photos.

- Get a free piece of chocolate when you fill out a mailing list insert and give to any bartender, usher or house manager.
- Sign up online at theaterwit.org/join
- Mailings twice per month. We don't deluge you with messages and we don't sell your name to other lists.

Facebook: facebook.com/theaterwit

DONATE

Theater Wit is a 501(c)(3) organization. Your tax-deductible donation supports Theater Wit and supports this building in its role as an artistic home for Chicago's best storefront theaters.

- Donate online at theaterwit.org/donate
- Make an instant donation at the box office, the bar, or with our house manager.
- Donate your time and talents! Theater Wit welcomes volunteers for office work, community outreach, building improvements and special events.

COCKTAILS at the THEATER WIT BAR

BELMONT RED LIME

*Belvedere Citrus Vodka, Rose's Lime,
Rose's Grenadine, Fresh Squeezed
Lemon*

BIBI, VIDI, VICI

*Mezcales de Leyenda Guerrero,
Blaum Bros Hellfyre, Koval Ginger,
Fresh Lemon, Cinnamon*

THE LUSE CANNON

*Blaum Bros Hellfyre, Sparkling
Pompelmo, Rose's Lime, Vermut*

SLINGS & ARROWS

*Koval Oat Whiskey, Koval Ginger,
Sparkling Limonata, Fresh Squeezed
Lemon*

HEAVY SUNSHINE

*Amaro, Koval Ginger, Orange
Juice, Orange Bitters*

CIRUS SUNRISE

*1921 Silver Tequila, Rouge Cherry
Liqueur, Sparkling Clementine,
Rose's Lime*

THE SURLY SHIRLEY

*Belvedere Citrus Vodka, Rouge
Cherry Liqueur, Rose's Lime Juice,
Seltzer*

LELE LEMON

*1921 Silver Tequila, Sparkling
Limonata, Combier Triple Sec,
Blaum Bros. Hellfyre*

JEREMY'S LAST WORD

*North Shore #6 Gin, Chartreuse,
Drambuie, Fresh Lime*

EAU DE CLARE

*North Shore #6 Gin, Cava, Fresh
Lime*

REBECCA'S

FLORAPOLITAN

*Belvedere Citrus Vodka, Combier
Triple Sec, Sparkling Aranciata
Rossa*

WICKED JAIQUIRI

*Shipwreck Spiced Rum, Combier
Triple Sec, Fresh Lime, Pineapple
Juice*

*Libations or concessions purchased at the bar
are always allowed in the theater.*



ABOUT FACE THEATRE STAFF

Artistic Director **MEGAN CARNEY**

Managing Director **ALANA PARVEY ZALAS**

Director of Institutional Giving **BENJAMIN SPRUNGER**

Director of Individual and

Major Giving & Special Events **DYLAN TOROPOV**

Marketing Coordinator **ARIANA SILVAN-GRAU**

Interim Outreach Manager **MIA VIVENS**

Interim Education Manager **DONNY ACOSTA**

Literary Associate **AJ SCHWARTZ**

Company Management Intern **EVAN ROSSI**

Development Intern **TOMMY VARELA**

ARTISTIC ASSOCIATES

Patrick Andrews, William Boles, Scott Bradley, Precious Davis, Philip Dawkins, Scott Duff, Mitchell Fain, Scott Ferguson, John Francisco, Keira Fromm, Sarah Gubbins, Eric Hoff, David Hyman, Bob Kuhn, Elizabeth Ledo, Kelli Simpkins, Arturo Soria, Benjamin Sprunger, Daniel Stermer, Paul Oakley Stovall, Mieka van DerPloeg, and Alex Weisman

BOARD OF DIRECTORS

Rob Abernathy

Carmelo Barbaro

Derek Blin

Erik Burns

Greta L. Ferkel

Kyla Norton

Anthony Priore

Charles Rhee

Geoff Robinson

Anthony Ruth

Heather Vickery

ABOUT FACE THEATRE creates exceptional, innovative, and adventurous theatre and educational programming that advances the national dialogue on sexual and gender identity, and challenges and entertains audiences in Chicago and beyond.

THEATER WIT STAFF

Producing Artistic Director **JEREMY WECHSLER**

Company Manager **DAVID WECHSLER**

Assistant Company Manager, Box Office **JOSH NORDMARK**

Press Relations **JAY KELLY**

Social Media / Casting **CLARE COONEY**

Front of House Manager **ALEXA ULRICH**

Production Manager **NORA RUBENSTONE**

Facilities Admin **NEAL JAVENKOSKI**

THEATER WIT, Chicago's "smart art" theater, is a major hub of the Chicago neighborhood theater scene, where audiences enjoy a smorgasbord of excellent productions in three, 99-seat spaces, see a parade of talented artists and mingle with audiences from all over Chicago.

"A thrilling addition to Chicago's roster of theaters" (Chicago Tribune) and "a terrific place to see a show" (New City), Theater Wit is now in its seventh season at its home at 1229 N. Belmont, in the heart of the new Belmont Theatre District in Chicago's Lakeview neighborhood. The company's most recent hits include *10 Out of 12* and *Mr. Burns*, a post-electric play by Anne Washburn, *Naperville* by Mat Smart, *The New Sincerity* by Alena Smith, *Bad Jews* by Joshua Harmon, *The (curious case of the) Watson Intelligence* and *Seven Homeless Mammoths Wander New England* by Madeleine George, and *Completeness and The Four of Us* by Itamar Moses.

In 2014, Theater Wit was awarded the National Theatre Award by the American Theatre Wing for strengthening the quality, diversity and dynamism of American theater. Theater Wit also brings together Chicago's best storefront companies at its Lakeview home, including 2017-18 resident companies *About Face*, *Kokandy Productions* and *Shattered Globe*.

ABOUT FACE THEATRE DONORS

Listing Reflects Donations Received from September 27, 2016 – September 26, 2017

AFT FOUNDERS SOCIETY

With a generous annual contribution or monthly gift totaling \$1,000 or more in a year, Founders Society members support today's LGBTQ+ artists creating About Face Theatre's mainstage performances as well as tomorrow's leaders with AFT's youth and outreach ensembles.

\$10,000+

Carmelo Barbaro and Alexander Boni-Saenz
Michael Leppen
Edward Potocek

\$5,000–\$9,999

Rob Abernathy and Peter Vamvakas
Derek Blin
Erik Burns and Benjamin Sprunger
Greta L. Ferkel
Becky Huinker
David Maier and Matt McGrane
Paige and Steve Peavler
Anthony Priore
Charles Rhee
Geoff D. Robinson and Emily Bergstrom
Anthony Ruth
Stephen Tubbs
Heather Vickery

\$2,500–\$4,999

Eileen Dordek and Chris Landgraff
Ted Grady and Ross Sloten
Anonymous
Bill Michel and Mark Botelho
Paul Semper and Eric Medina
Stephen Lowell Swanberg
Doug Wright

\$1,000–\$2,499

Geoffrey Anderson
Anna, Charlie and Margaret Blackburn
Ryan Burns and Justin Kesselring
Judge Tom Chiola (Retired)
Christopher Dionesotes and Sam Portaro
Pat Ewert and Susan Blake
Edward Flood and Hal Kugeler
Em Hall
Drew and Anne Kent
Elizabeth A. Kimball
Daniel and Anita Mauro
Dr. Dwight McBride
Robert McCamant
John Morse and Wesley Broquard
Paul Semper and Eric Medina
Thomas Shapiro and Madeleine Grynsztejn
Stephen Lowell Swanberg
Denis Weil
Daniel Weisberg and David Klingenberg

\$500–\$999

Michael Alexa
Anonymous

Prudence Beidler
Cheryl Lynn Bruce and Kerry Marshall
Victoria Carney
Steve Davis and Eddie Rothermel
William W. Greaves
Stella Green
Jordan Heinz
Michael Jung
Robert Kohl and Clark Pellett
Amy Matheny
Kevin McGirr
Nancy McLaughlin
Chuck Middleton and John Geary
Leslie Oster and Daniel Rodriguez
Mark Pellegrino
George Dante Pineda
Mike Silvaggi
Thomas Sondgergeld and Sean Brosnan
Richard Sypniewski
Joan and Dane Wells
Paul Winberg and Bruce Czuchna

\$100–\$499

Jon Altizer
Laura and Alan Abrahamson
Al and Rosanne Andrews
Jim Andrews and Rich Cohrs
Anonymous (x4)
Sonia Arroyave and Nina Fernandez
David Aslesen
Rebecca and Wade Bacon
Chris Baer and Matt Greenberg
Peggy Bagley and Rabbi Douglas Goldhamer
Parke Ballantine
Barbara Barnes
Angela Barnes
John Barry and Dan Otto
Amy Beck
James Bennett
Roger Bialcik
Thomas Blaser
James Bonfield and Humberto Rodriguez
John Bowen
Tony Breed
Ana Brennan
Pandora and Mark Brewer
Graham Bridgeman
Daniel Brownell
Tim Brynda
Katie Burgoon and Maia Benson
Edson and Judy Burton
Peter Calibraro
Kathleen and Evan Caliento
John B. Callen
Greg Cameron and Greg Thomson
Andrea Campbell
Sean Campbell
Philip Carabello
Shanta Cardiel
Megan Carney
Jason Carr
Paul Cary
Bill Chamberlain and Howard Heyman
Ruth Clark and Loraine Edwalds
Dana Cohen
Robert Cohn
Adam Colangelo
Doug Conomy
Frank Conte
Gregory Copeland
Victor L. Corder
Vincent Cousineau
Kenneth Creech
James Crumbacher
Anthony D'Amato
Dr. Beth Dawkins
R. Bruce DeMent
Patricia Detrie
Harold Diaz
Sandy Dinkel
Suzanne Donnels
Dan Dornbrook
Liz Dozier
Deanna Dunagan
Halfpipe Stinkybuns Campbell-Dunphy
Carlos Echeverria-Estrada
Susan Eichler
Keith Endersen
Toby Eveland and Brian Johnson
Frances Felske and Graham Bridgeman
Scott Ferguson and Chris Walsh
Mark Fesenmyer and Scott Saporiti
Brent Fisher and Jim Rinnert
Dr. Wayne Franklin
Bruce Frasier
Dan and Jackie Frett
Donald Frey
Claudiu Gagu
John Gallagher and Tod Tappert
Spencer Gartner
Gary Gephart
Elvie Gibbs-Jordan
Ethel and Bill Gofen
Susan Greenberg
Kevin Gregory
Joe Griffith
William Haddad
Kelly Hallberg
Jeffrey Hamm and Brian Elmore
Kathryn Hanley
Roland C. Hansen
Matthew Harper
Steve Haught and Bob Stoner

Tadd W. Heidgerken
Hector Hernandez and Brad
Suster
Fred Hill
Craig Hines
Casey Horton
Melissa Hubbard
Amy Hutchison
James A. Huttenhower and
Phillip A. Tommey
William Hynes
Lynne Inman
Todd Israel and Bryan Bieser
Shawnesse Jackson
Marina Jankovic
Nathan Jenks and Mark Tumiel
Jim Jensen
Patricia Kane and Kim Osgood
Mark Kaplan and Michael Camp
Paulynn A. Katsulis
Julia Kelly
Jack Kiburz
Chase Kimball
Ronald Klimek
Rob Kolson
Mark and Ann Marie Lewis
Rhett Lindsay
Mike Liska
Dr. Paul M. Lisnek
Eric Lofdahl
Chris Lonn
Steven Lutz
Kelly Madigan
Jeanne Martineau
John Matthews
Carl May
Michael McAdams and Clayton
Dibble
Julia McBride
Ann McBurney and Lynn
Soderlund
Bryan McGuire
Eric Meierhoefer
Bill Melamed and Jamey
Lundblad
Andreas Melinat
Paul Mennen
Gary F. Metzner
Alice Meyer
Colleen Miloni
Stan Mims
Anthony R. Miner
Georgette Mitrovic
Mary Morten
Deborah Murphy
Cathy Nathan
Sioux and Katy
Tim Oravec
Chad Osborn
Kaine Osburn
Aubrey and Ellen Parker
Marla and Dick Parvey
Jonathan Pearl
Jonathan Pizer
Vincent Poggi
Tim Pontarelli
Scott Popp
David Prindable
Jerry Proffitt
William Pry
Bene Putz
Adam Robinson and Anna Jung
Steve and Donna Robinson
Catharine Romano
Adam Rossier
Stephen Roy and Lloyd Kohler

Hadley Rue
Timmy Samuel and Christopher
Gotschall
Hunter Sanders
Jolene Saul
William Schade
Timothy Scherck
Lewis D. Schlanbusch
Chris Schmidt
Heather Schmucker and Lisa A.
Freeman
Nerea Schoonhoven
Scott Schroeder
Roche Schulfer and Mary Beth
Fisher
John Schwartz and James
Mosley
Bob Schwartz
Kathryn Seifert
F. Sheppard Shanley
Richard H. Shoemaker and
James E. Ruud
RJ Silva
Thomas Sinkovic
Cindy Sobel
Ron Bauer and Michael Spencer
Jeffrey Spivock
Dale Sporrer
Natalie Stacker
Patricia Staszak
Senator Heather Steans
Richard Stoneham
Mike Sullivan and Mark
Robertson
Betsy Sylvester and Lawrence
Mollo
Andrew Szegedy-Maszak and
Elizabeth Bobrick
Scott Takacs and Joe Koecher
Joseph Tapp
Christine Taylor
The Cast, Crew, and Creative
Team of The Instrumentals
Barbara and Randy Thomas
Ronald Thomas
Brady Twigg
Janeen Vanhooke
Raymond Vasiukevicius
Christina and Roland Veit
William Vickers
Alexia Courtney Ward
Christopher Warmanen
Mac Wellman
Patti and Sirous
Ellen Wiggins and Kathleen
Powers
Greta Wiley Flory
Christopher Wirth
Raymond Wohl
Brian Woodworth
Ashley Wright
Brian Yocum
Teresa Zhu

\$1-\$99
Johnny Adams
Ben and Susie Alexander
Anonymous (x3)
Will Aronson
Patricia Barber
Dawn Barcus
Zach Barr
Jill Barry
Sherylynn Baylor
Jonathan Becks
Nic Belgrave

David Bentlin
Emma Berndt
Geoff Bieger
Matthew Blancett
Christine Bowman
Sarah and Malachy Boyle
Thomas Brittain
James L. Brott
Brigid and Mike Browne
Robert Brunner
Helen Burns
Kim and Joe Cartwright
Joseph Caserto
Christopher Chantson
Casey Chapman
Randall Chism
Jeff Colgan
Shayna Cook
Eric Cornell
Jason Cox
M. Pat Cummings
Cheryl Dann
George Darveris
Lesley Douglas
Thomas Drexler
Kelly Duke
Alan Eddington
Olivia Edmunds-Diez
Laurence Edwards
Heather Eglard
John Erskine
Elizabeth Fischer
James Francis
Judy Friedman
Keira Fromm
Breck Furnas
Cornelia Gamlem
Vince Gattton
Marc and Joy Gerber
John Gerschütz
Norden Gilbert and Ben
Thomas
Alicia Ginsburgh
Steve Glickman
Karen Goldfeder
Lorelei Joy Goldman
Tanara Golston
Laurel Grauer
Pat Guizzetti
Shelby Hagstrom
Christopher Harnack
Alex Hernandez
Robert and Cliff
Robin Hohl
Bill and Peggy Horan
Michael Horvich
Chris Huaracha
Carol Hufnagl
David Isaacson
Kenneth A. Jones
Dave Jupp
Aaron Kacel
Aaron Kaczmarek
James Kaplan
Brian Kasper
Dean C. Kaufer
Ken Kaye
John Kelly
Henson L. Keys
Stephen Klabish
Sandra Klein
Kyle Knight
Brian Koenig
Roselee Kraus
Bob Kuhn
Patricia Flood

Mary LaPierre
 Chad Larsen-Stauber
 Joy Lau
 Harry Letzmann
 Samuel Levine
 Jeffrey Loibl and Adam Flores
 Carrie Lydon
 Mona Mansour
 Beth Marrier
 Donna Martin
 Cynthia Mathews
 Ronald McClure
 Joseph McDonald
 Ken McFadden
 Kevin J. McLemore
 David McMillan
 Lyla Meinhardt
 Jason Merrill
 Geoffrey Meyer and Rex Babiera
 Monika Micko
 Ken and Chris Moe
 Ann Morris and Vada Woods
 Claudia Mosier
 Gabi Mulder
 Erika Napoletano
 Donald Niepagen
 Courtney O'Connell
 Luis Ortega and Felix Olivares
 Karen Osborne
 Robert Otterson
 Marissa Padilla
 Noa Padowitz and Elena
 Grossman
 Bethany Pagels-Minor

Marian Paguette
 Joel Palilla
 In Memory of Doris Paul
 Linda Pauel
 Dr. John T. Pawlikowski
 John Peery
 Laura Perkins
 David Perry
 David Pezen and Gary J. Louis
 Kate Piatt-Eckert and Tony St.
 Clair
 Wendy Pollack
 Himabindu Poroori
 Merrill Prager and John Levine
 Sharon Rafos
 James Ramos
 Greg Raub and Steve Kohl
 Mark Reese
 Elizabeth Ress
 BJ Richards
 Joseph Rippin
 Jose Rodriguez
 Peggy Roeder
 Elaine Sachnoff
 Richard Schieler
 Allison Schuette
 Michael Scobey
 Pedro Serrano
 Mark L. Sherkow
 Sade Smith
 Brian Smuts
 Ryan Stanfield
 Barry Stern
 Betty Stevens

Brian Stout
 Richard Stuckey
 Carol Stukey
 Liza Summers
 Alejandro Tey
 John Thompson
 Sheila Thompson
 In Memory of Kathleen Timp
 Dylan Toropov
 Mary Toropov
 Nathan Towne-Smith
 Matthew Twohig
 Sue Vanderhoof
 Robert Veasey
 Dawn Walter
 Erin and Aaron Walters
 Whitney Wasson
 Cynthia Waters
 Wilbert O. Watkins
 David and Elizabeth Weber
 Jeremy Wechsler and Penny
 Penniston
 Daniel Weingart
 Biz Wells and Jessica Carson
 Kate Wilson
 James Wiltshire
 Renee Witten
 Adam Wolf
 Nathan Wonder
 Nathan Wright
 George S. Zahrobsky
 Alana Zalas
 Cary A. Zartman

AFT SUSTAINERS CIRCLE

About Face Theatre would like to thank the Sustainers Circle, a community of donors who pledge a recurring monthly or quarterly donation in support of the Theatre and its mission to advance the national dialogue on sexual and gender identity.

Erik Burns and Benjamin
 Sprunger
 Judge Tom Chiola (Retired)
 Kenneth Creech
 Jeffrey Hamm and Brian Elmore

Lynne Inman
 Shawnesse Jackson
 Chase Kimball
 Daniel and Anita Mauro
 Dr. Dwight McBride
 Paul Mennen and Jeff Kessler

Paul Semper and Eric Medina
 RJ Silva
 Mike Sullivan and Mark
 Robertson
 Stephen Lowell Swanberg
 Dylan Toropov

AFT works diligently to keep our donor list accurate and up-to-date. Please bring any additions, corrections, or unintentional errors to the attention of Dave Toropov at dave@aboutfacetheatre.org.

THEATER WIT DONORS

LEADERSHIP CIRCLE (\$5000+)

Anonymous x 2
 In memory of Carol K
 Cyganowski
 Gaylord and Dorothy Donnelley
 Foundation
 Illinois Arts Council Agency
 David Mahvi and Oia Celikbilek
 The Negaunee Foundation
 August Bechtner
 Bruce and Sandra Wechsler
 MacArthur Fund for Arts and
 Culture at Prince

FOUNDERS' CIRCLE (\$1000-\$4999)

Russell and Courtenay
 Ainsworth

Edgar Bachrach
 Joyce Chelberg
 Chris Comerford and Virginia
 Kim
 Roger and Abby Daniel
 Dramatists Guild Fund
 Brett Gitskin
 Keystone Visual
 Mimi Lutwak
 John Mahoney
 Jeffrey and Simona Morris
 Mr. Arthur Murphy and Audrey
 Davis
 Roche Schulfer and Mary Beth
 Fisher
 Neal Smyth and Martha
 Christensen
 Kathy Stieber

DIRECTORS' CIRCLE (\$500-\$999)

Mrs. John J Bransfield
 Charlotte Ziporyn Family
 Diana and Richard Senior
 Fossil Group
 Goldman Sachs
 Stella Green
 Jeanne Martineau
 John and Sami Nordmark
 Antonia and David Mason
 Mark and Linda Nordenberg
 Gabriel and Dorit Raviv
 Susie and Rick Rieser
 Rochelle Hochman
 Salesforce Matching Grants
 Salesforce.org
 Karen and Frank Schneider
 Alden and Kristen Senior

Eric Slauter
The Saints Volunteers for the
Performing Arts

**PERFORMANCE CIRCLE
(\$250-\$499)**

Nancy S Bishop
Arnold and Susan Flank
Sue & Arnold Flank
Kerryann Hasse Minton
James Joseph
Jean A Klingenstein
Charles and Fran Licht
Elizabeth Lovelady
Donald & Victoria Scott
J Eric Smith and Marcia Brom
Smith
Lisa and Randy White

**ARTISTS' CIRCLE
(\$100-\$249)**

Larry Higa
Glenn and Andria Anderson
Janet and Stu Baker
The Blackburn Family
Lou Cabrera
Yvette Chavez
Dorothy and Ed Churchwell
Alan and Hedy Daniel
John Elfers and Laurie Suomala
Laurie Suomala
Terry Finkel and Susan Strunk
Jeffrey & Heather Fleitz
Elfie Freudenthaller in Memory
of Helmut
Cynthia and Sandra Garber
Michael Glick & Joseph Wicklick
Kim Graber
Bryan and Pamela Gruley
Cynthia Ho
Lois and James Hobart
Jane Crisler
John Jay
JLL Community Connections
Maria Kolb
Gaby Kuhn and Chuck Marien
Karen and Bob Lewis
Karen J Lewis
Betsy Martens
Jason Merrill
Chava and Martin Mozes
Janis and John Notz
John Otto
Richard & Mary Dowd
Bernard Rodgers
Ron and Adrienne Rovin
Jack Rubin and Pat Yuzawa-
Rubin
Eileen Schoaff i/m/o Carol K
Cyganowski
Carol Senderowitz
Andra and James Simon
Jane A Sims
Victoria Sterling
Lauren Taslitz
Veeva Systems
Milan Vydareny
Ian and Lali Watt
Melody Wechsler
Matilda Wilhoite Family
Janice Witzel
Nancy L Young
Nancy Loewenberg Young
Charlotte Ziporyn

WIT CLUB (UP TO \$99)

Anonymous
Ony Achufusi
Sam Adam
Chris Albano
John Alderson and Phyllis
Rabineau
Rebecca Anderson
John andrich
Susan Antman
Louis Aquila and Sandie Weiss
Sara Cantor Aye
Linda and Craig Backe
Jayne Baldwin
Helen Bant
Peter Baranowski
Russell Barefield
Jairus Bellamy
Maia Benson
Jeff Berke
Anjali Bidani
Nichole Blahnik
Michael Blatter
Molly Blitstein
Mary Bonnett
Erwin Booth
Don Bora
Debbie Boton
Evelyn Bottando
Christina Bourn
Jennifer Bozarth
BP Foundation, Inc.
Josh Brickman
CJ Bright
John and Judy Bross
Suzanne Brown
Dean and Tina Bruno
Megan Bui
Janet Burroway
Nora Bushman
Karen Callaway
Laureen Carini
Catherine Carpenter
Joshua Carter
Sean Chandler
Valerie Chang
Sylvester Charles
Gia Nicole Chase
Candace Chesler
Filippa Christofalou
Esthela Chumbi
JR Clark
Katherine Coleman
Mario J Coletta
Elizabeth Collins
Timothy & Rachel Comar
Helene Connolly
Lynn Cooper
Darwin B Corrin
Michele Coudures
Deborah Craft
Lola Craig
Marie Crump
Serg Cvetkovic
Michal Czopczyk
Paul and Deanna Danao
Alan Daniels
JoAnna Daryanani
Ninos David
Fran Davidson
Eva Davis
Therese Dean-Myrda
Chelsea DeBaise
Luke DeMarte
Rachel Deming

Douglas Dixon
Louis C Dolmon
Kathleen Donahue-McNally
Kevin Donohue
Sean Douglass
Glenn Doyle
Shannon Doyle
Greer DuBois
David Dumitru
David Egan
Shane Eichstaedt
Abraham Epton
Gilberto Espinoza
Dana Fasman
Vivian Fernbacher
Lieselotte Ferrin
Dr. & Mrs. Anthony Finder
Kathleen Fischer
Mary Flanagan
John Foley
Bert Fox
Stephanie Free
Roxann Bragg Fromm
Ken and Fran Fruit
Joey G
Eboni Galmore
Dileep Gangolli
Stephen Gazaway
Madeleine George
John Ghorbati
Sam Giarratano
Keith E. Giles
Lisa Ginot
Alice Ginsburgh
David Gitomer
Kate Godfrey and Warren
Maltzman
Ethel and Bill Gofen
Marvin Golden
Lasky Goldman Family
Patrick Goldman
Olga Gonzalez
Joe Gracia
Demond Graham
Deborah Granite
John and Kathleen Gremer
Paul Greve
Daniel Grey
Michael Grindell
Susan Grossman
Kim Grunewald
Agnes Hamos
Chris Hannafan
John B Harasen
Dorothy G Harza
Carolyn B Healy
Ilana Heaton
Nina Heiser
Angeline Heisler
Walter Henebry
Ellen Hochberg
Linda and Eric Hochstein
David Hoemann
Joan Hoes
John Holleman
Kerryann Minton
Mark Holt
Meghan Hoover
Chuck Hornewer and Ashley
Nelson
Hornewer Law Firm
Jean Hornewer
Jim Horvath
Lori Howard
Melissa Hubbert

Bethany Irvin
 Adam Jabs
 Paul Jacobs
 Nuhad Jamal
 Judith H Janowiak
 Michelle Jardine
 Jason Ries and Karen Krolak
 Barbara Jenig
 Rebecca Johnson
 Steven Jones
 Kristal Juarez
 Marian Kaderbek
 Emma Kalaidjian
 Jeremy Karpen
 Dewitt Kavanagh
 Maxine Kelley
 Veronica Kelly
 Christopher Kidder-Moström
 Shannon Kirby
 Freshworks Dental Studio
 Margaret Kittle-Kamp
 Susan Klingenstein
 Gregory Knapp
 Ashele knight
 Charles Knudson
 Sara Kochanny
 Jean Marie and Robert Koon
 Michelle Kouba
 Micah R Krohn
 Maria Kronfeld
 Robert W. Krug
 Christopher Lafferty
 Mayra S Lagunas
 Mary M Lane
 Andrew Harlan Latham
 Wiley Lauerman
 Robert Lehman
 Michael Best Jeans Day
 Michael Leppen
 Jill Lerner
 Mary Lesch
 Blake Levinson
 Laura Levitan
 Peiyu Lin
 Steve London
 Austin Lopez
 Kelly Lusk
 Selette MacNerland
 David Mann
 Steven Manson
 In honor of John & Ronen Kohn
 Olivia Martinez
 Chris Mathews
 Carol Mayer
 John McGloin
 Caroline McKee
 Kimberly McKinney
 John McLees
 Patrick McNamee
 Lyla Meinhardt
 Julie Melvin
 Lynn Merel
 Andres Merlos
 William Metcalf
 Nancy and Gordon Meyer
 Mark Michaud
 Monika Micko
 Shawn Miller
 Tim Miller
 Rebecca Klem Mills
 Rebecca Mills
 Michael Best & Friedrich LLP
 Jakub Mirejovsky
 Leslie Mishel
 Madeline Moon
 Sara Morgan
 Kristin Mount
 Carol Mullins
 Eric Munoz
 Michael Nagel
 Erika Napoletano
 Lewis Nashner
 Cathy Nathan
 Kathleen Naureckas
 Dan Nichols
 Dawn Nielsen
 Greg Nigolian
 John and Sami Nordmark
 Mara L Notbusch
 Katherine O'Brien
 Colm O'Muircheartaigh
 Christina Olson
 James Orr
 Jay Owen
 Nolan John Padgett
 Mia Park
 Na Hyun Park
 Mark Allen Parker
 Carlos I. Perez
 Marquita Perry
 Cheryl Picha
 Donald Pier
 Lynn Pikrone
 Scott Podraza
 Alison Polidano
 Felice G. Pomierski
 Susanna Porter
 Donald Potter
 LaDonna Diane Powe
 Glen Prezembel
 Jerry Proffit
 Anthony Qaiyum
 Deborah Quazzo
 Alexander Ramos
 Ranney Ramsey
 Jeff Rappin
 Jeff Rappin and Penny Brown
 Ravenswood Event Center
 Thomas and Donna Ray
 Linda Reid
 Julia Reticker-Flynn
 Peter Thomas Ricci
 Kristin Rice
 Anthony Roberts
 Gay Roberts in memory of
 Claudia, Sandy, & Honey
 Mercedes Rohlfs
 Jessica Rojas
 Jorge Rojas
 Emily Rosenbaum
 John Rourke
 Brian O Routen
 Roger Rudich
 Charles Russell
 Dennis Rutkowski
 Maureen Ryan
 Connie Sabin
 Laura Sachs
 Jeffrey Sack
 Paul Safyan
 Matthew Saleski
 Paul Sanders
 Michael Santonocito
 Amy Sarno
 Christopher and Ann Marie
 Saturnus
 Mary Ann Savard
 Kyle Schauenberg
 Justin Schmandt
 Emma Jo Schumacher
 Mellany Schumacher
 Kamisha Scott
 Sharon Seeder
 Alicia and Phil Senior-Saywell
 Service Club of Chicago
 Elizabeth Shepherd
 James sheppard
 Timothy Sherck
 Cheryl Sheridan
 Robert Shineflug
 Rani Silvert
 George and Lynne Simon
 Junie Sinson
 John G Slawson
 William Smillie
 Jane Smith
 Sandra Smith
 Neal & Bonnie Smyth
 Ernie Lewis and Susan Smyth
 Avigail Snir
 Theresa Sofianos
 Elaine Soloway
 Joel Spenadel
 Sue Stanley
 Elaine J. Starinchak
 Barry Stern
 Olivia Stovicek
 John Strasswimmer
 Mary Strupeck
 Crystal Summers
 Priscilla and Arnold Sutker
 Natalie Swinnea
 Todd Szerlong
 Judith Tanter
 Sharon Taylor
 Kristen Teasdale
 Roberta Temkin
 The Shubert Foundation
 Gill Thornton
 Taylor Tolleson
 Jill Toporkiewicz
 Steve Ranton
 Annie Tully
 Benjamin Turbow
 Denise D. Turcotte
 Matthew Twohig
 Liat and Tali Tzur
 James Ulwick
 Amanda Urteaga
 Danica Vendiola
 Caroline K. Vickrey
 Jean-Pierre Vidrine
 Bruce Viner
 On Behalf of the staff at Brella
 Productions
 Pamela Waltz
 Caitlin Watkins
 Allison Weathers
 Meghan Welsh
 Rinda West
 Sara Whaley
 Gwennan Wilbur
 Timothy J Wilcox
 Julie Wolf
 Lance Wolfe
 Mel Wolff
 Cara Young
 Mary Kate Young
 Robert Zentner
 Mark Zumbach
 Mary Lou Zwick