



William Massolia  
*Artistic Director*

Presents

# VIOLET

**Book & Lyrics by Brian Crawley**

**Music by Jeanine Tesori**

Based on 'The Ugliest Pilgrim' by Doris Betts

**Directed by Scott Weinstein**

**Music Direction by John Cockerill**

**Choreography by Kasey Alfonzo**

*Set Design*

Lauren Nigri

*Lighting Design*

Alexander Ridgers

*Sound Design*

Keegan Bradac

*Production Manager*

Catherine Allen

*Costume Design*

Izumi Inaba

*Properties Design*

Jamie Karas

*Stage Manager*

Jon Ravenscroft

## FEATURING

Stephen Allen, Connor Baty, Brianna Buckley, Nick Druzbanski,  
Sarah Hayes, Maya Lou Hlava, Anthony Kayer, Nicole Laurenzi,  
Will Lidke, Matt W. Miles & LaShera Zenise Moore

## THE GRIFFIN'S 2017/2018 PREMIERE SEASON SPONSORS

**Michael and Mona Heath**



The Griffin Theatre Company is a member of the League of Chicago Theatres, Theatre Communications Group, Western Arts Alliance, Association of Performing Arts Presenters, International Performing Arts for Youth and is partially supported by a grant the Illinois Arts Council, a state agency.

## THE CAST IN ORDER OF APPEARANCE

Nicole Laurenzi.....	Violet
Maya Lou Hlava.....	Young Violet
Nick Druzbanski.....	Leroy, Waiter and Ensemble
Anthony Kayer.....	Preacher, Bus Driver and Ensemble
Sarah Hayes.....	The Old Lady, Hotel Hooker and Ensemble
Stephen Allen.....	Flick
Will Lidke.....	Monty
Matt W. Miles.....	Father
LaShera Zenise Moore.....	Lula, Almeta and Ensemble
Connor Baty.....	Virgil, Billy Dean and Ensemble
Brianna Buckley.....	Music Hall Singer and Ensemble

**Time:** September 1964

**Place:** A bus journey from Spruce Pine, North Carolina to Tulsa, Oklahoma

*VIOLET will be performed without intermission*

## UNDERSTUDIES

Brittney Brown.....	Lula/Almeta & Music Hall Singer
Caitlyn Cerza.....	Violet & Old Lady
Nick Drubanski.....	Preacher
Mikey Gray.....	Young Violet
Zach Schley.....	Monty & Virgil
David Stobbe.....	Father & Leroy

## IN THE PIT

John Cockerill.....	Conductor & Keyboard 1
Stephen Boyer.....	Keyboard 2
Robert Campbell.....	Guitar
Simeon Tsanev.....	Bass
Connor Zagrans.....	Drums

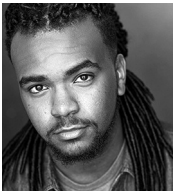
## ADDITIONAL PRODUCTION STAFF

Assistant Choreographer.....	Leon Evans
Assistant Director.....	Laura McClain
Technical Director.....	David Moreland
Casting Director.....	Eleanor Axt
Dialect Coach.....	Sammi Grant
Scenic Artist.....	Steph Charaska

## MUSICAL NUMBERS

Water in the Well.....	Violet, Young Vi
Surprised .....	Violet
On My Way.....	The Company
M&M's .....	The Company
Luck of the Draw.....	Young Vi, Father, Violet, Flick, Monty
Question 'n' Answer .....	Violet, Monty
All to Pieces.....	Violet, Monty, Flick
Water in the Well (Reprise).....	Young Vi
A Healing Touch .....	Preacher & Ensemble
Let It Sing.....	Flick
Anyone Would Do .....	Hotel Hooker
Who'll Be The One .....	Radio Trio, Young Vi, Father, Monty, The Old Lady
Last Time I Came to Memphis.....	Monty
Go to It.....	Monty, Flick
Lonely Stranger.....	Music Hall Singer
Hard to Say Goodbye.....	Flick, Violet
Promise Me, Violet.....	Monty, Flick, Violet
Raise Me Up.....	Lula, Preacher, Virgil, Choir
Down The Mountain.....	Virgil, Violet, Father, Young Vi
Raise Me Up (Reprise) .....	Violet
Look at Me .....	Violet
That's What I Could Do .....	Father
Surprised (Reprise).....	Violet, Company
Promise Me, Violet (Reprise).....	Violet, Flick
Bring Me to Light.....	The Company

## CAST & PRODUCTION STAFF BIOGRAPHIES



**STEPHEN ALLEN (Flick)** is excited to be making his Griffin debut! He was last seen as Nomax in *Five Guys Named Moe* at Court Theatre. Other Chicago credits include *In The Heights (Porchlight*

*Music Theatre)*, *The Scottsboro Boys (Porchlight Music Theatre)* and *Jesus Christ Superstar (Paramount Theatre)*. He has enjoyed working with this wonderful company and can't wait to share this story with the audience.



**CONNOR BATY (Virgil, Billy Dean & Ensemble)** is excited to be joining Griffin Theatre with *Violet*. He has recently been seen in *Little Miss Sunshine* with Chicago Theatre Workshop and as

Ray in *Beauty Queen of Leenane* with Bluebird Arts. Other Chicago credits include shows with Piven Theatre, Pride Films and Plays and Other Theatre Company. He will be directing his first show, Steve Yockey's *very still and hard to see* with his new theatre company Exit 63 this spring at the Athenaeum. Graduate of the Boston Conservatory. Thanks Mom and Dad!



**BRIANNA BUCKLEY (Music Hall Singer & Ensemble)** is originally from the state of Michigan where she obtained her BFA Acting degree from Michigan State University. She has called Chicago home for the past 3 years and has recently been seen in *King Liz* (Windy City Playhouse), *The Departure* (Haven Theatre), *Genderbreakdown* (Collaboraction Theatre),

etc. This is her debut with Griffin Theatre and she is very excited to be in her first musical in Chicago and be a part of this amazingly talented cast. She is looking forward to her next endeavor.



**NICK DRUZBANSKI (Leroy, Waiter & Ensemble)** is thrilled to be making his Griffin Theatre debut. Previous Chicago theater credits include: *Rock of Ages* (Drury Lane), *High*

*Fidelity* (Refuge Theater Project), *Seminar* (Spartan Theater), *Thrones! The Musical Parody* (The Apollo), *Our Class* (Remy Bumpo), *Plaid Tidings* (Beverly Arts Center), and *Henry VIII* (Chicago Shakespeare Theater). Regional: *Les Miserables* (Alliance Theater in Atlanta, GA) National Tours: *Ragtime* and *Sound of Music*. You can check out my podcast, *Nick and Caitlyn's Talent Show*, on iTunes!



**SARAH HAYES (The Old Lady, Hotel Hooker & Ensemble)** is delighted to work with Griffin Theatre again after performing in *The Flying Trunk* and *Stinky Cheese Man* many years ago.

Recently, she appeared in *Bonnie & Clyde* (Emma Parker) with Kokandy Productions and *James & the Giant Peach* (Spiker/Sponge U/S performed) at Drury Lane Oakbrook. Other credits include *The House of Blue Leaves* (Bunny) and *Playboy of the Western World* (Widow Quin) with Raven Theatre, *The Addams Family* (Ancestor) with Mercury Theater, *Evita* (Ensemble, Jeff Award nomination) and *Man of La Mancha* (Aldonza, Jeff Award nomination) with Theo Ubique, and *Bells Are Ringing* (Ella), *How to Succeed* (Krumholtz), and *Ragtime* (Emma Goldman) among others with Porchlight Music Theatre. Sarah also had the pleasure of co-hosting the 2015 and 2016 non-Equity Jeff Awards ceremony.



**MAYA LOU HLAVA (Young Violet)** is honored to be making her Griffin Theater debut. Other Chicago credits include, *Trevor* (Writers Theatre), *The Nether* (A Red Orchid Theatre),

*White Christmas* and *Bye Bye Birdie* (Drury Lane Theater), *Jake's Women* (Spartan Theatre Company), *The Secret Garden* (Court Theatre), *The Talking Cure* (Idle Muse Theatre Company), *Jane Eyre* (Lifeline Theatre), *The Wheel* (Steppenwolf Theatre). Maya is also a principal voice over artist for Disney's World of English and was seen in the film *The Life of Penny Cyclone* within the US Premiere of *Ride the Cyclone* (Chicago Shakespeare Theatre). Many thanks to Stewart Talent, and to Scott for giving her this amazing opportunity!



**ANTHONY KAYER (Preacher, Bus Driver & Ensemble)** is thrilled to be making his Griffin debut with this phenomenal group of artists! Other Chicago credits include work

with: Lifeline Theatre (*Jane Eyre*, *The Emperor's New Threads*, *Lyle Finds His Mother*, *Arnie the Doughnut*), The House Theatre of Chicago (*The Great and Terrible Wizard of Oz - u/s*), inappropriate theatre company (*R&J: a techno ballet*, *(the)Forget\_Me\Knot*), Lookingglass/Chicago Children's Choir (*Sita Ram*), Next Theatre (*Iphigenia 2.0*), Chicago Shakespeare Theatre (*Elizabeth Rex*), and Steppenwolf (*The March*). He is an alumnus of The Chicago College of Performing Arts at Roosevelt University and is a proud member of Lifeline Theatre's Artistic Ensemble.



**NICOLE LAURENZI (Violet)** most recently understudied the role of Alison in Victory Gardens *Fun Home* and is elated to be working on another beautiful piece by Jeanine Tesori. Other

recent work includes the role of Charlotte in

Kokandy Productions *Little Fish*, *The Death and Life of Billy The Kid*; a multi medium folk opera created by Seth Bockley and Frank Maugeri, *Cinderella After the Ball* at Marriott Theater and *Motherhood Out Loud* at Oil Lamp Theater. A graduate of NYU's Tisch School of the Arts Nicole performed on the east coast for several years as well as in the Broadway National Tour of *Mamma Mia!* A huge thank you to the cast and creative team and love, as always, to J.



**WILL LIDKE (Monty)** returns to Griffin Theatre, where he previously understudied *Bat Boy*. Other Chicago credits include: *Saturday Night Fever* at Drury Lane; *Ride the Cyclone (u/s)*, *Tug of*

*War: Foreign Fire (u/s)* at Chicago Shakespeare Theater; *Dog Sees God*, *Spring Awakening* at Fearless Theater; *The Man Who Murdered Sherlock Holmes (u/s)* at Mercury Theater. TV/ Film: *Chicago Justice* (NBC), *Through The Trees* (AAA Productions). Will holds a BFA in Acting from the Chicago College of Performing Arts, and is proudly represented by Shirley Hamilton Inc. He also pursues a passion for music production & sound design. So many thanks to his parents, sister, friends, and ember love for their support.



**MATT W. MILES (Father)** After working in LA last year, Matt is grateful to be back in Chicago and with Griffin Theatre & the enormously giving company of artists in *Violet*. Recent

appearances include: Emerald City Theatre, Hell In A Handbag, Drury Lane Theatre, Mercury Theater, Timber Lake Playhouse, *Chicago Rot* (Dakini Productions), *Sirens* (USA Network), *Chicago Fire / Chicago PD* (NBC), *Empire* (FOX), and the Jeff Award Nominated Chicago Premiere of *Murder Ballad* (Bailiwick Chicago). Matt received a BFA in Musical Theatre Performance from the University of Tulsa and studied puppeteering with Jim Henson Productions. Matt would like to thank

everyone at Griffin, Scott for his amazing support and direction and his loving and supporting wife, Agnes.



**LASHERA ZENISE MOORE (Lula, Almeta & Ensemble)** is a Chicago Native and a Graduate from Columbia College Chicago, where she received her B.A. in Vocal Performance. At

Columbia, she proved herself to be the goto singer for any style needed, from Country, Pop and Rock to Jazz, Gospel, Blues and R&B Soul, and quickly found herself performing with such greats as: New York Voices along with Darmon Meader and Peter Eldridge, Buddy Guy, Koko Taylor, Mavis Staples, Brian Culbertson and other professional musicians. She currently sings with The Forte Band, John Paris Band, Chicago Yestet and Joe Cocker Tribute band/ Soundtracks of a Generation. In addition, she is currently a part-time staff at Columbia College Chicago. LaShera has performed the Skokie theatre for the Ella Fitzgerald tribute to her album; "Live at Mr. Kelly's", Chicago's Annual Blues Fest in summer 2012 and again in 2016, along with her blues mentor, Mr. Fernando Jones. She was a featured soloist in the "I'll Take You There, Homage to Blues and Gospel" musical with Ms. Bobbi Wilsyn, along with other former instructors and other artists. She also performed at the several other festivals with the Yestet, including the Green Mill and Room 43. Furthermore, She was a Teaching Artist and Actor for Windy City Music Theatre and has participated in shows with Windy City such as; "Little Shop of Horrors" (2013), "Guys and Dolls" (2014), "Oliver" (2014), "Godspell" (2015), "Cinderella" (2015) "A Little Princess" (2016) "Hairspray" (2017) and now "Violet" (currently). I'm humbly blessed to be a part of this and working with the cast and crew has been amazing, thank you all for making me feel welcome.

**JEANINE TESORI (Music)** won the Tony Award for Best Original Score with Lisa Kron for the musical *Fun Home*. She has

also written Tony-nominated scores for *Twelfth Night* at Lincoln Center; *Thoroughly Modern Millie* (lyrics, Dick Scanlan); *Caroline, or Change* (lyrics, Tony Kushner); and *Shrek The Musical* (lyrics, David Lindsay-Abaire). The production of *Caroline, or Change* at the National Theatre in London received the Olivier Award for Best New Musical. Her 1997 Off-Broadway musical *Violet* (lyrics, Brian Crawley) opened on Broadway in 2014 and garnered four Tony nominations, including Best Musical Revival. Opera: *A Blizzard on Marblehead Neck* (libretto, Tony Kushner; Glimmerglass) and *The Lion, The Unicorn, and Me* (libretto, J. D. McClatchy, Kennedy Center). Music for plays: *Mother Courage* (dir. George C. Wolfe, with Meryl Streep and Kevin Kline), *John Guare's A Free Man of Color* (Lincoln Center Theater, dir. George C. Wolfe), and *Romeo and Juliet* (Delacorte Gala). Film scores: *Nights in Rodanthe*, *Every Day*, and *You're Not You*. Ms. Tesori is a member of the Dramatists Guild and was cited by the ASCAP as the first female composer to have two new musicals running concurrently on Broadway. She is the founding artistic director of *Encores! Off-Center* at New York City Center, and is a lecturer in music at Yale University. Most of all, she is the proud parent of Siena Rafter, a senior at LaGuardia High School for the Arts.

**Brian Crawley (Book & Lyrics)** is a playwright and screenwriter. He wrote the book and lyrics for A LITTLE PRINCESS (composer Andrew Lipppa) which debuted at Theatreworks of Palo Alto in the summer of 2004. He also wrote the book and lyrics for VIOLET (composer Jeanine Tesori) which was mounted Off-Broadway by Playwrights Horizons in 1997, then remounted in a concert version in 2003 to help inaugurate their new theater. Other musicals he has written include EVANGELINE with Ted Dykstra, and DOWN THERE with composer Lewis Flinn. He appears in the documentary ONE NIGHT STAND, in which he writes a short musical in 24 hours with composer Gabriel Kahane. For the libretto of VIOLET, Brian won the Kleban Award. Prior to the Playwrights Horizons production, and on its behalf, VIOLET was given the Richard Rodgers

Musical Production Award and an AT&T OnStage Award. Afterwards, besides a Lucille Lortel Award for Outstanding Musical, VIOLET received the New York Drama Critics Circle Award for Best Musical over all the year's Broadway offerings (as did Paula Vogel's play HOW I LEARNED TO DRIVE; the first time two off-Broadway pieces took these top awards in the Drama Critic Circle's history). Brian's plays have been developed or staged at Lincoln Center, New York Theater Workshop, the National Alliance of Musical Theatre, and the Eugene O'Neill summer theater conference. He majored in Theater Studies at Yale and has an MFA in Acting from the American Conservatory Theater in San Francisco. Brian is a member of the Dramatists Guild.

**SCOTT WEINSTEIN (Director)** is thrilled to return to Griffin Theatre where his previous credits include *Ragtime*, *Titanic* (Jeff Nom - Best Director, Best Musical), *Bat Boy: The Musical* (Jeff Nom - Best Director) and *25th Annual Putnam County Spelling Bee*. Favorite Chicago credits include *Rock of Ages* (Drury Lane Theatre); *Rent* (Theo Ubique, Jeff Award - Best Director & Best Musical); *She Kills Monsters* (Steppenwolf Theatre Garage Rep); and *Seussical* (Chicago Shakespeare Theater). Favorite New York and Regional credits include *Million Dollar Quartet* (Fingerlakes Musical Theatre Festival); *Baristas* (New York International Fringe Festival) and *Knights of The Sales Office* (Adirondack Theatre Festival). He is a company member with Redtwist Theatre where he has directed *Circle Mirror Transformation*, *All-American* and *The Drawer Boy*. Scott served as the Associate Director for the National Tour, Las Vegas and Chicago productions of *Million Dollar Quartet*, and continues to direct the first regional production currently running at the Lawrence Welk Theatre as well as the resident production on Norwegian Cruise Lines. Upcoming work includes *Sex With Strangers* (Cardinal Stage), *Million Dollar Quartet* (Phoenix Theatre), *Frost/Nixon* (Redtwist Theatre) and *Murder For Two* (Marriott Theatre). Scott is a proud graduate of Northwestern University and member of SDC. [www.Scott-Weinstein.com](http://www.Scott-Weinstein.com)

**JOHN COCKERILL (Music Director)** is a Chicago-based vocal coach and pianist. He holds a MM from the University of Colorado-Boulder in Collaborative Piano. Recent credits include *As One* (Chicago Fringe Opera), *Bonnie & Clyde* (Kokandy Productions), *María de Buenos Aires* (Des Moines Metro Opera), *Xanadu* (American Theatre Company), and *High Fidelity* (Refuge Theatre Project). He was a featured pianist on the premiere recording of Ross Crean's new opera, *The Great God Pan* (Navona Records, 2017). He'll be joining Tri Cities Opera in Binghamton, NY for their upcoming productions of *Master Class* and *La Tragédie de Carmen*.

**KASEY ALFONSO (Choreography)** originally from Los Angeles, is now a Chicago-based performer and choreographer. She has worked all over Chicago, including Lookingglass Theatre, Paramount Theatre, Chicago Shakespeare Theatre, The Court Theatre, American Theatre Company, and Chicago Children's Theatre. As a choreographer, her work has been featured with Kokandy Productions, The Inconvenience, First Floor Theatre, Quest Theatre Ensemble, and Inappropriate Theatre Company. She is a company member for Firebrand Theatre and she will be the choreographer for their upcoming production of *9 to 5*. She also teaches Dance at the Chicago Academy for the Arts.

**ALEXANDER RIDGERS (Lighting Design)** is originally from Scotland, Alexander is very excited to be working with this team on *Violet!* Recent design credits include: *Rooming House* with Lucky Plush Productions (Steppenwolf 1700/Lookout Series – Nov 2017); *Quixote: On the conquest of self* at Writers Theatre (Oct 2017); *Deathtrap* at Milwaukee Chamber Theatre (Aug 2017); *Ragtime* with Griffin Theatre, Chicago (May 2017); *James and the Giant Peach* at Drury Lane, Oakbrook (May 2017); *Miranda* at Indiana Repertory Theatre (April 2017); *The Wiz* with Kokandy Productions (March 2017); *Urinetown* at Northwestern University (Feb 2017); *Winterset* with Griffin Theatre (Nov 2016). Alexander is Adjunct Lecturer of Lighting Design at the University of Illinois

at Chicago, an assistant with Marcus Doshi Design, and was nominated in the 2017 Non-Equity Jeff Awards for his work on Griffin Theatre's *Winterset*. He has an MFA from Northwestern University, and a BA from the Royal Conservatoire of Scotland. For more information on where to see upcoming design work or preview work visit: [www.alexanderridgers.com](http://www.alexanderridgers.com)

**LAUREN NIGRI (Set Design)** is a Chicago native and received her MFA in Theater Design from Northwestern. She was chosen as a Design Exhibitor at the 2015 Prague Quadrennial. Her design credits include: *Souvenirs* (Milwaukee Repertory Theater); *The Scorpion Sting Opera* (Lyric Opera/Lyric Unlimited); *Sleeping Beauty* (Marriott Theater); *Betrayal* (Raven Theatre); *The Few* (Steep Theatre); *Adding Machine, A Musical* (The Hypocrites); *My American Cousin* (Silk Road Rising); *The Awake* (First Floor Theater). Future projects include *A Midsummer Nights Dream* at Chicago Shakespeare Theater, the world premier of *Hinte* at Steep Theater, and *Nice Girl* at Raven Theater. LaurenNigri.carbonmade.com

**IZUMI INABA (Costume Design)** is happy to return at Griffin Theatre, where she previously designed *Stage Door*, *Spring Awakening*, *Flare Path*, *Burnt Part Boys*, *Spelling Bee*, and *Bat Boy*. Her recent credits include *The Who And The What* (Milwaukee Rep), *The Crucible* (Steppenwolf For Young Adults), and *Marie Christine* (Boho). She is a resident designer at Albany Park Theater Project. M.F.A. in Stage Design, Northwestern University.

**KEEGAN BRADAC (Sound Design)** is excited to be working with Griffin Theatre for the first time. He is a Chicago-based sound designer and engineer, with a B.A. from Columbia College in Audio Arts & Acoustics. Recent design credits include *The Scottsboro Boys*, *Marry Me a Little*, and *Little Me* (Porchlight); *Bullets Over Broadway* (NightBlue); and *All Shook Up* (Casting Auction). His Sound Engineer credits include *Fun Home* (Victory Gardens); *It's a Wonderful Life* (2016 & 2017, American Blues); *Little Fish* (Kokandy Productions); *Thrones! The Musical Parody*

(Apollo Theater); *In the Heights*, *Dreamgirls*, *Far From Heaven*, *Ain't Misbehavin'*, *Applause*, *Chess*, and *The Rink* (Porchlight).

**JAMIE KARAS (Properties Design)** is excited to be working on *Violet!* In Chicago she has worked for *Le Puff* and *Born Yesterday* (Remy Bumppo); *Upright Grand* (Citadel Theatre); *Wolf At The End Of The Block* and *In The Time Of The Butterflies* (Teatro Vista); *Becky Shaw*, *Bootycandy*, *Apartment 3A*, *This*, and *Explorer's Club* (Windy City Playhouse); *Tall Girls* (Shattered Globe); *Welcome to Jesus* and *Men On Boats* (American Theatre Company); *Nutcracker*, and *Death And Harry Houdini* (House Theatre of Chicago); *Get It All Back* (Sideshow Theatre); *The Invisible Hand* and *Bobbie Clearly* (Steep Theatre); *Grizzly Mama* (Rivendell Theatre); *Gypsy* and *Mame* (Light Opera Works); *Once In A Lifetime*, *In A Word*, and *D.O.A.* (Strawdog Theatre) and many others. She is the current Prop Shop Supervisor at Loyola University of Chicago.

**JON RAVENSCROFT (Stage Manager)** loves being behind the table and in the booth with Griffin. *Violet!* is Jon's 10th collaboration Griffin. Previous Griffin credits include *London Wall*, *Pocatello*, *Balm in Gilead*, *Golden Boy*, *Flare Path*, *The Burnt Part Boys*, *Spring Awakening*, *Port* and *Company*. Jon's other theatrical homes include Steep Theatre (*Earthquakes in London*, *The Life and Sort of Death of Eric Argyle*, *Moment*, *Pornography* and *Harper Regan*) and work with Haven, Caffeine, Theater Seven and Strawdog among others.

**SAMMI GRANT (Dialect Coach)** is very excited to be a part of the *Violet!* team. Other Chicago Theatres she has worked with include: Goodman Theatre, Drury Lane, Porchlight Music Theatre, Remy Bumppo, Timeline Theatre, Windy City Playhouse, The Gift Theatre, Strawdog Theatre, Steep Theatre, Eclipse Theatre, and many more. Her TV coaching credits include: *The Exorcist* (Fox) and *Patriot* (Amazon Prime). Sammi also works as a voiceover artist and is represented by Big Mouth Talent. She would like to thank her mom and Colin for all of their support.

**CATHERINE ALLEN (Production Manager)** is back working with Griffin where she previously production managed *Pocatello*, *Winterset*, *In To America*, and *Ragtime*. Other production management credits include work with About Face Theatre, Steep Theatre, Route 66 Theatre Company, Congo Square Theatre, Oak Park Festival Theatre, Pegasus Theatre Chicago, Haven Theatre, Chimera Ensemble, A Red Orchid Theatre Youth Ensemble, Pine Box Theater Company, and Step Up Productions. She currently works at The Den Theatre as the Production Coordinator and is the staff Production Manager at Actors Gymnasium in Evanston. She is a graduate of the University of Illinois, Urbana-Champaign, where she received a BFA in Acting.

**LAURA MCCLAIN (Assistant Director)** is so proud to be a part of this lovely production with this fantastic cast and creative team. As an actor, Laura has worked with Griffin on *Ragtime*, *Titanic*, *The 25th Annual Putnam County Spelling Bee* and *Company*. Thanks to Scott for inviting her to sit on the other side of the table for the first time!

**William Massolia (Artistic Director)** is a founding member of the Griffin Theatre Company. He is the author of over 30 plays and adaptations including, *Be More Chill*, *Little Brother*, *Stardust*, *Loving Little Egypt*, *Shakespeare's Dog*, *Ash Can Alley*, and *The Stinky Cheese Man and Other Fairly Stupid Tales*. His play *Letters Home* recently completed a 19 city National Tour of North America and his children's play, *Frindle* was presented in 50 US cities since 2009. Massolia is a 7-time Joseph Jefferson Award nominee for his work as a playwright. A graduate of Southern Illinois University, Mr. Massolia is a past member of the League of Chicago Theatres Board of Directors, a recipient of an IAC Playwriting Fellowship Award and currently sits on the theatre advisory panel for the Illinois Arts Council.



## ANNUAL FUND

The Griffin Theatre Company would like to gratefully acknowledge the contributions made by individuals, corporations, foundations and government agencies throughout the year, which have enabled our arts organization to continue to produce quality arts programming for young and old. If you would like to find out more about supporting the Griffin Theatre Company please call 872-806-2660 or use the form attached.

### **\$10,000 and up**

The California Community Foundation  
The MacArthur Fund for the Arts at the Richard H. Driehaus Foundation

### **\$5,000 - \$10,000**

Elizabeth F. Cheney Foundation  
City of Chicago Department of Cultural Affairs and Special Events, CityArts Grant Program  
The Gaylord & Dorothy Donnelley Foundation  
The Illinois Arts Council  
Jeff Graves

### **\$2,500 - \$4,999**

Claire Conley  
Ronald A. Greene Memorial Fund  
James P. & Brenda S. Grusecki  
Michael and Mona Heath  
Terry Kozlowski  
Stephen MacLean  
Robert & Barbara Richards  
The Saints  
Terrance Stevenson

### **\$1,000 - \$2,499**

Bruce Beatous & Kassie Davis  
Joyce Chelberg  
Bill & Mary Lou Griffin  
IBM Corporation  
Paul Klaeyen  
Mr. & Mrs. Bruce Leap  
Joan Mazzonelli  
Helmut Mlakar  
Roberta & Dan Pierro  
Jerry Proffitt  
Randy & Barbara Thomas

### **\$500 - \$999**

Jonathan Abarbanel  
Ann Barzel  
James Donnelley  
Timothy Fox  
Mary Grover  
Marian Kulesz  
Mr. & Mrs. William Massolia  
Mary Jane McCart  
Thomas Murphy  
Patrick Henry Arts Fund  
Patrick Trettenero  
Lisa & Randy White

### **\$250 - \$499**

Diane Aitken in memory of David Aitken III  
Richard Barletta  
Thomas & Linda Berk  
Mary Carra  
Sandra deBettencourt  
Tyrell Funkhouser  
State Representative Greg Harris  
Mark Hudson  
Pete James  
Stephen H. Johnson  
Sandra Kamp  
K's Dugout  
Joan Klingenstein  
William Massolia  
Hugh & Charmaine Spencer

### **\$100 - \$249**

Marge Adreani  
Karen Anderson  
Judy & Mike Bishop  
Lisa & Brad Bishop  
Sandra Blau  
Paul & Kathy Boyd  
Heinz & Marian Busta  
Barry Carlson  
Russell Carr  
Catalyst Ranch

Katheryn Conway  
Carol Corski  
Mary Ann & Leonard Cowherd  
Carol Crisci  
Mr. & Mrs. T.M. Desmarias  
Alan Donahue  
Gale Dreas  
Deborah Early  
James Ellis  
Timothy R. Fox  
James & Sylvia Franklin  
Judith Freeman  
John W. Fritz CPA  
Donald Gecewicz  
Kathy & David Gemperle  
Kik Gilman  
John Glover  
Sam & Roslyn Grodzin  
Philanthropic Fund  
Ann S. Hoenig  
Suzanne Hoffman  
IBM Corporation  
Mari Louise Kailing  
Leah Kaiser  
Rich & Heidi Katz  
Glenda Kravitz  
Barbara Lanctot  
Ted Lucore  
Daniel & Flora MacLean  
Suzi Marks  
Amy Matheny  
K. F. Mazurek  
Bridget McDonough  
Maureen K. McKeough  
Michael McNamara  
Nancy and Charles McPike  
Walter S. & Arlene Mikol  
Movement is Life/CIC Consulting  
Thomas & Cecilia Murphy  
Piccirillo & O'Connor  
Ovation Vintage  
Mack & Sara Overton  
Kurt & Elizabeth Peters

Paulette Petretti  
 Charles & Angela Platt  
 Fred & Linda Sauers  
 Karen & Frank Schneider  
 Sharon Seeder  
 Paul & Linda Shadrake  
 The Silver Foundation  
 Laurence Sloma & Lauralyn  
 Persson  
 Don & Karen Zastawny  
 Seymore Zitomersky

**\$1-\$99**

Janet & Roy Ahlgren  
 Christopher Alvarado  
 Jerry & Gail Baccetti  
 Larry Baldacci  
 Betty Barclay  
 Richard Basofin  
 Audrey Beasley  
 Carol E. Beatty  
 Georgia A. Beatty  
 Alex Benjamin  
 Deborah & Mark Berry  
 Anne Basye  
 Jane E. Betkus  
 Michele Greco &  
 Robert Blonski  
 Jerry Blumenthal  
 Fern Bogot & Norman Wald  
 William Botwick  
 Paul & Carol Brott  
 Delano J. Busczynski  
 Maggie Cain  
 K.A. Callaway  
 Christina Calvit  
 Victor M. Cassidy  
 Donna & Michael Cavan  
 B.A. Church  
 Ian & Donna Cohen  
 Veronica & Matthew Cook  
 James Covello  
 Marie E. Cristol  
 Eileen Crowley  
 Melissa Culverwell  
 Erica Danos & Joseph  
 Schwartz  
 Erica Danos  
 Mark Davoust  
 Marie Bernedette Deglise-  
 Favre

Eddie Dekel-Tabak  
 Therese B. Delisio  
 Maj. George & Mary  
 Dempsey, USAF Ret.  
 Mike & Stephanie DePaul  
 Jill DeVaney  
 Patricia Donegan  
 Mark Dougherty  
 Thomas and Sue Druffel  
 Natalie Dubs  
 Sanford Elias  
 Sharri L. Farris  
 David T. Feldman & Ruth  
 Anne Huston  
 Clay Fenstermaker  
 Herbert & Nancy Ferguson  
 Sally Fermaint  
 Roger & Delores Flaherty  
 Pat & Jack Frank  
 Judy Freed  
 William Fried  
 Michelle Geoga  
 David Goldberg  
 Mandel Goodkin  
 Michael Goodkin  
 Mark & Cynthia Greenwood  
 Martha & Ramon  
 Greenwood  
 Shonah Greer  
 Karen Grost  
 David Grusenmeyer  
 Caroline Guenette  
 Kenneth Hager  
 Joanne B. Hahn  
 Susan Haimes  
 Barbara Hale  
 Marion Hank  
 Christine Haught  
 Barbara Heathfield  
 Tom & Ginny Helm  
 Carole Hilkin  
 Arlene Gloria Hirsch  
 Gary Houston  
 Annalee Letchinger &  
 David Hoppe  
 Ellen Horan  
 Mark Horowitz  
 Ruth Anne Huston  
 Patricia Irwin  
 Edward A. Jarger  
 Mariane Kallen

Mary Klasen  
 Gregoire Klees-Johnson  
 Kristin Johnson  
 Linda Kagan  
 Mike Kaiser & Dale Royer  
 Cheryl & Mark Kaplan  
 Leonard Kaplan  
 Sandra Kaspar  
 Madaline & Ted Kiedysz  
 Patricia Kilduf  
 Samantha Kittle  
 Mary J. Klasen  
 Jeffrey Koblish  
 Koh-Varilla Guild  
 Jamie Kosinski  
 Sharon Kremkau  
 Carol Krizman  
 Stephen Kuck  
 Ruth Kurczewski  
 Robert Lanum  
 Dolores & Bob Lathan  
 Karen Layer  
 Sean Le  
 Ben Ho & John Lee  
 Lori Lee  
 Marvin & Ann Leiner  
 Vincent Lengerich  
 Charles Licht  
 Dion Limsomdatanin  
 Kathleen Lucas  
 Deborah Lynch  
 Jamie Lynn  
 Lisa Roberts & John  
 MacDougall  
 Bob & Linda Maher  
 Richard Marzec  
 Michael McNamara  
 Mary Marnell  
 Frank McCarthy  
 Richard McGuire  
 Timothy Michel  
 Marvin Mirsky  
 Lori Mitchell  
 Raymond & Ronald  
 Mitchell  
 John & Sandra Moore  
 Thomas & Suzanne  
 Morabito  
 Mary Mullaney  
 Lisa Murphy  
 Rose & Ronald Navarro

Annette & Steve Newby  
Dan Olsen  
Donna Paglia  
Mary Poole  
Rick & Carol Prieto  
Thomas Ray  
Carolyn & Bill Redding  
Bob and Katie Remer  
Jerry & Sue Ring  
Ed Ripp  
Elizabeth Roach  
Barbara Madej Roos  
Mary & Michael Rothschild  
Jill Hannah Rosenberg  
Heddi Schellbach  
Phil & Enat Schlak  
Barbara Kay Schmitt  
Susan & Ian Schwartz  
Vladimir Seizovic  
Renee Settels  
Kathleen L. Shannon

Carol Shrailberg  
Pam & John Simmons  
Norm Sloan  
James B. Smith  
Ms. Mary Ann Sorokie  
Donald Sprague  
Dr. Mrs. John Stankiewicz  
Lynn Staudacher  
Seth Stein  
Barry W. Stern  
Linda Strozdas  
Andrea Sullivan  
Bobbie R. Thomas  
Marilyn R. Torreme'  
Tom Viskocil  
Donajean D. Vitale  
Richard P. White & Susan  
Beach  
Ginger Williams  
Karen & Mike Williams  
Howard Witt

Nancy Woodruff  
Toby Wright  
Jody Yohanna  
Jan Yusk  
Roberta B. Zabel

**IN-KIND Donations**

Aquanaut Brewery  
Begyle Brewery  
Catalyst Ranch  
City of Chicago  
Empirical Brewery  
Fireside Restaurant  
Half Acre Brewery  
K's Dugout  
Metropolitan Brewery  
Vanguard Archives, Inc

**Carson's**  
BETTER BRANDS | BIGGER SAVINGS

---

INTRODUCING  
**LXR AND CO**

LXRandCo brings you vintage handbags & accessories from iconic designers like Louis Vuitton, Hermès, Gucci, Prada, Cartier, Dior, Chloé and more. Our selection of these products is as unique as the pieces themselves, so we encourage you to visit often and see what's in store.

---

LXRandCo available at...

**EDENS PLAZA • HARLEM IRVING  
ORLAND SQUARE • YORKTOWN**

## ABOUT THE COMPANY

Our mission: The Griffin Theatre Company exists to create extraordinary and meaningful theatrical experiences for both children and adults by building bridges of understanding between generations that instill in its audience an appreciation of the performing arts. Through artistic collaboration the Griffin Theatre Company produces literary adaptations, original work and classic plays that challenge and inspire, with wit, style and compassion for the audience.

### The Griffin Theatre Company

William Massolia  
*Artistic Director*

Sarah Camargo  
*Business Manager*

#### **Board of Directors**

Claire Conley - Chairperson  
Jeff Graves  
Terry Kozlowski  
William Massolia  
Joan Mazzone  
Diane Aitken - Emeritus  
Richard A. Barletta - Emeritus

#### **Founding Artistic Director**

Richard A. Barletta

#### **Advisory Board**

Lynn Auerbach  
Bill Burnett  
Peggy Gormley  
Mitch Kohn  
Marian Kulesz  
Liz Livingston  
Tom Leopold  
Rick Levine  
John David Lutz  
Kevin MacKinnon  
Virginia Madsen  
David McFadzean  
Helmut Mlakar  
Denise Stewart

#### **Artist Ensemble**

Jonathan Berry  
Joey deBettencourt  
Vanessa Greenway  
Kevin Kingston  
Morgan Maher  
Ellie Reed  
Joe Schermoly  
Lynda Shadrake  
Robin Witt



(Please detach this form and mail it with your tax-deductible donation.)

**I would love to support the Griffin Theatre Company's programming and permanent home.**

Please accept my donation of:

\$25.00    \$50.00    \$100.00    \$250.00    \$\_\_\_\_\_ other

- Check enclosed  
 My employer makes matching gifts - form enclosed  
 Please charge my credit card

Card Number \_\_\_\_\_ Expiration date \_\_\_\_\_

CVC \_\_\_\_\_ Signature \_\_\_\_\_

Name: \_\_\_\_\_

Address: \_\_\_\_\_

Phone Number: \_\_\_\_\_

Email Address: \_\_\_\_\_

Please return this form to: Griffin Theatre Company  
5301 North Damen Ave. • Chicago, IL 60625