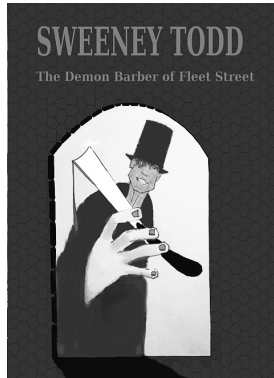


CHICAGO

THEOUBIQUE
CABARET THEATRE

at the No Exit Café presents



Music and Lyrics by Stephen Sondheim | Book by Hugh Wheeler
 From and Adaptation by Christopher Bond

Originally Directed on Broadway by Howard Prince

Orchestrations by Jonathan Tunick

Originally Produced on Broadway by Richard Barr, Charles Woodward, Robert Fryer, Mary Lee Johnson, Martin Richards in Association with Dean and Judy Manos

FEATURING:

Philip Torre Jacquelyne Jones

DirectorFred Anzevino
 Assistant DirectorCourtney Crouse
 Music Director Jeremy Ramey
 Choreography..... James Beaudry
 Production Stage Manager.....Mina Slater
 Scenic Design..... Ben Lipinski
 Lighting Design.....James Kolditz
 Costume Design Bill Morey
 Properties Design.....Aji Slater
 Dialect Coach.....Darren Hill
 Violence DesignR&D Choreography

This project is partially supported by The MacArthur Fund for the Arts and Culture at The Richard H. Driehaus Foundation, The Saints, and our many generous individual donors.

Sweeney Todd is presented through special arrangement with Music Theatre International (MTI). All authorized performance materials are also supplied by MTI. www.MTIShows.com

The videotaping or making of electronic or other audio and/or visual recordings of this production is a violation of united states copyright law and an actionable federal offense.

CAST

Mrs. Lovett	Jacquelyne Jones
Begger Lady	Megan Elk
Johanna	Cecilia Iole
Judge	John B. Leen
Beadle	Kevin Webb
Sweeney Todd	Philip Torre
Toby	Frankie Leo Bennett
Anthony	Nathan Carroll
Pirelli	Ryan Armstrong
Ensemble / Pirelli U/S	Grant Brown
Ensemble / Mrs. Lovett U/S	Missy Wise
Ensemble / Anthony U/S	Trevor Vanderzee
Ensemble / Johana U/S	Hope Elizabeth Schafer
Understudies	Anna Blanchard, Chris Furrer, Matt McNabb, and Matt Miles

ORCHESTRA

Piano	Jeremy Ramey
Violin	Simeon Tsanev
Reeds	Jay Gummert
Cello	Rachel Schuldt

DIRECTORS/DESIGNERS

Fred Anzevino	Director
Courtney Crouse	Assistant Director
James Beaudry	Choreographer
Jeremy Ramey	Music Director
Mina Slater	Production Stage Manager
Ben Lipinski	Scenic Design
James Kolditz	Lighting Design
Aji Slater	Properties Design
Darren Hill	Dialect Coach
R&D Choreography	Violence Design

ACT I

Prologue: The Ballad of Sweeney Todd.....	Company, Todd
No Place Like London	Anthony, Todd, Beggar Woman
The Barber and His Wife.....	Todd
Worst Pies in London	Mrs. Lovett
Poor Thing.....	Mrs. Lovett
My Friends.....	Todd, Mrs. Lovett
Ballad (reprise 1)	Ensemble, Judge, Beadle
Green Finch and Linnet Bird.....	Johanna
Ah, Miss	Anthony, Johanna, Beggar Woman
Johanna (part 1).....	Anthony
Johanna (part 2).....	Anthony
Pirelli's Miracle Elixir.....	Tobias, Crowd, Todd, Lovett
Pirelli's Entrance	Pirelli
The Contest (part 1): shaving scene.....	Pirelli
The Contest (part 2): tooth-pulling scene	Pirelli, Tobias
Ballad (reprise 2)	Ensemble, Beggar Woman
Johanna (Mea Culpa)	Judge
Wait.....	Mrs. Lovett, Beggar Woman
Pirelli's Death.....	Pirelli
Ballad (reprise 3)	Tenor Trio
Kiss Me (part 1)	Johanna, Anthony
Ladies in their Sensitivities.....	Beadle
Kiss Me (part 2): Quartet	Beadle, Anthony, Johanna, Judge
Pretty Women (part 1)	Judge, Todd
Pretty Women (part 2)	Todd, Judge, Anthony
Epiphany.....	Todd, Mrs. Lovett
A Little Priest	Mrs. Lovett, Todd

ACT II

God That's Good!	Tobias, Customers, Mrs. Lovett, Todd, Beggar Woman
Johanna (Quartet): Act 2 Sequence.....	Anthony, Todd, Beggar Woman, Johanna
After Johanna	Johanna
By the Sea (part 1)	Mrs. Lovett, Todd
By the Sea (part 2)	Mrs. Lovett
Wigmaker Sequence (part 1).....	Todd, Anthony
Ballad (reprise 4)	Quintet
Wigmaker Sequence (part 2).....	Anthony, Todd
The Letter	Quintet, Todd
Not While I'm Around.....	Tobias, Mrs. Lovett
Parlour Songs (part 1): Sweet Polly Plunkett	Beadle
Parlour Songs (part 2): Tower of Bray	Beadle, Tobias, Mrs. Lovett
Parlour Songs (part 3): Sweet Polly Plunkett	Mrs. Lovett
Ballad (reprise 5)/ Fogg's Asylum	Lunatics, Johanna
City on Fire/ Searching (sequence)	Lunatics, Johanna, Mrs. Lovett, Todd, Beggar Woman
Ah, Miss (reprise)	Anthony, Johanna
Beggar Woman's Lullaby.....	Beggar Woman
The Judge's Return.....	Todd, Judge
Ballad (reprise 6).....	Company
Final Scene (part 1)	Todd, Mrs. Lovett
Final Scene (part 2)	Todd, Tobias
Epilogue: The Ballad of Sweeney Todd	Company, Todd, Mrs. Lovett (Full Cast)

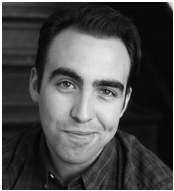
ABOUT THE CAST



Ryan Armstrong

(Pirelli) is thrilled to be returning to the Theo Ubique stage for the sixth time. Previously seen in *An Anthony Newley and Leslie*

Bricusse Songbook, *Passion*, *Jesus Christ Superstar* (Pilate), and most recently in *The Most Happy Fella*. Other credits include *Les Mis* at Timber Lake Playhouse and *Mr. Munch has a Murmur* at Underscore Theatre. Ryan originates from St. Louis and received his bachelors degree in Theatre from Millikin University. Ryan would love to thank Fred and Courtney for, once again, an exciting opportunity.



Grant Brown

(Ensemble/ Pirellie) Having recently moved to the city, Grant couldn't be more excited to have his first Chicago production be

with Theo Ubique! When he's not acting on stage, he's playing music at the NYC Kids Club or with his band, *Day Off*. Favorite credits include the regional premiers of *Spring Awakening* (Ulbrecht, Generations: A Theatre Co.) and *VOTE! A New Musical* (Mark Boyd, TUTS), *Big River* (Huck Finn), *Our Town* (Stage Manager), *25th Putnam Spelling Bee* (Barfee), *Songs for a New World* (Man 1), *Crazy For You* (Bobby Child), *Jane Eyre* (Rochester), and *Mary Poppins* (Bert). Special thanks goes out to friends, family, TLP Alumni, Courtney, and Fred. Love you Mom!



Nathan Carroll

(Anthony) is making his Theo Ubique debut! He was last seen in *Bonnie and Clyde* (Preacher) with Kokandy Productions. Other

Chicago credits: *Kiss of the Spider Woman*

(Molina – Non-Equity Jeff Nomination, Best Actor Musical), *Parade* (Young Soldier/Britt Craig), and *Floyd Collins* (Ensemble, u/s Bishop) all with BoHo Theatre, and *Annie Get Your Gun*, *Oliver*, *The Student Prince*, *Brigadoon*, and *Hello Dolly* with Light Opera Works. Readings: *Flight* (*Daedalus - Chicago Musical Theatre Festival*) and *Harold and Maude* (Harold, Chicago Reading). Columbia College Chicago alum.



Megan Elk (Beggar

Lady) is an interdisciplinary performer, composer, and director who has worked extensively throughout Europe and

the US. Favorite roles include Madame Flora (*The Medium*), Edna Crabapple (*Mr Burns: A Post-Electric Play*), and Cecilia March (*Adamo's Little Women*). Frequently working as a composer and music director, she has enjoyed stints at both Lifeline Theatre and Lyric Opera of Chicago, having been commissioned to compose and music direct *Freedom Out of Order* for Lyric's Chicago Voices initiative in 2016. In addition to her theatrical compositions, her discography as composer and producer for *The Loom and The Shuttle* (2012) and *Miss Alexandra Huntingdon: LIVE at Survival Kit* (2015) has garnered much critical acclaim. Ms. Elk currently serves as guest artist and director for Northern Illinois University's studio theatre series, as well as curating the cabaret performances as talent manager and producer at Davenport's Piano Bar and Cabaret. For more information, please visit www.meganelk.com.



Cecilia Iole (Johanna)

Theo debut! Chicago credits include *Sweeney Todd* (Johanna) at Paramount and *Candide* (Cunegonde) at Music Theatre Works. Regional credits:

ABOUT THE CAST CONT.

The Little Mermaid (Ariel), *Les Miserables* (Cosette) and *Titanic: The Musical* (Caroline) at Rocky Mountain Repertory Theatre. She is a proud graduate of the University of Arizona and is represented by Gray Talent Group. So much love to Mom, Dad and my amazing friends. For Ellar.



Jacquelyn Jones (Mrs. Lovett) Jacquelyne Jones is over the moon to be returning to Theo where she was last seen as Sue Ellen in *Honky Tonk Angels!* Chicago

credits include: *Lizzie the Musical* (Firebrand Theatre) *Pump Boys and Dinettes* (Timberlake Playhouse), *Company* (Writers Theater), *Heathers the Musical* (Kokandy Productions), *Mill Girls* (American Theater Company), *The Gilded Age* (City Lit Theater), and *Pericles* (Chicago Shakespeare Theater). Regional credits include: the National Premiere of *Zorro the Musical*; *Oliver* (Hale Center Theater), and the west coast tour of *One Nation* (American Heritage Orchestra). She would like to thank her family at Theo Ubique for giving her the chance to tackle this role and her husband for being the real baker of sweets at home.



John B. Leen (Judge) is honored to be back with Theo after appearing in *The Light in the Piazza*, *Passion* and *Chess*, for which he won a Non-Equity Jeff

Citation (Best Supporting Actor in a Musical). Favorite recent roles include Javert in *Les Mis* and Edward Rutledge in *1776*. To name some, John has worked locally at Drury Lane Water Tower, Court, Theatre at the Center, Light Opera Works, Bailiwick, BoHo, Apple Tree, Porchlight, and Northlight, and regionally at Music By the Lake, Okoboji Summer Theatre, Farmers Alley and the Asolo Rep in Florida. John B. can also be seen & heard on TV and radio

spots for the likes of the Chicago Bulls, The Onion Productions and Cellcom. Thanks for coming and enjoy the show!



Frankie Leo Bennett (Toby) returns to Theo Ubique following his performance as the ever-effervescent Mark in *Altar Boyz* this past holiday season.

Regional credits include: *In the Heights* (Broadway World Chicago Award – Best Actor in a Musical/Revue), *New Faces Sing Broadway 1985* (Porchlight Music Theatre); *Triassic Parq* (Circle Theatre Chicago); *The Wiz* (Emerald City Theatre); *Christmas Dearest* (Hell in a Handbag Productions); and was featured in the concert presentation of *Flies! The Musical* at Uptown Underground. Bennett is also a playwright and lyricist and has trained at Chicago Shakespeare Theater and Second City Training Center. #ProudEMC www.frankieleobennett.com



Trevor Vanderzee (Ensemble / Anthony U/S) is an active member of Chicago's theatre scene and has performed with companies such as

Music Theatre Works, Highland Park Players, Chicago Fringe Opera and Opera for the Young. This past summer he was seen in 4 different shows as a young artist at Utah Festival Opera and Musical Theater. Recently he was seen in *Peter Pan* at Music Theatre Works. His favorite roles include Sid (*Pajama Game*), Belcore (*L'elisir d'Amore*), Papageno (*The Magic Flute*), Fred (*Kiss Me Kate*), and Tony (*The Most Happy Fella*). In 2017, he won 1st place in the Hal Leonard Competition and the NATS Chicago Musical Theatre Competition, and received an Emerging Artist award through the Lotte Lenya Competition. Trevor is a proud

graduate of the DePaul University School of Music. He is grateful to God for all he's been blessed with!



Hope Elizabeth Schafer (Ensemble / Johana U/S) is originally from Oklahoma, and is a senior musical theatre major at The Chicago College of Performing

Arts at Roosevelt University. She was most recently seen this past summer performing in *Mary Poppins*, *Evita*, *Carousel*, and *Cinderella... After The Ball* at Timber Lake Playhouse. Hope is so happy to be back at the No Exit Café with her Theo family where she was last seen in *The Most Happy Fella*. Love to her family, friends, and the girls of 2025! Thank you for attending the tale and enjoy the show!



Philip Torre (Sweeney Todd) is thrilled to debut one of his dream roles right in his own back yard at Theo Ubique (literally-he lives in the

neighborhood!). Philip has appeared in leading roles with opera companies in the U.S. and abroad including Lyric Opera of Chicago, New York City Opera, Boston Lyric Opera, Pittsburgh Opera, Manitoba Opera, Opera Maine, Opera Delaware among others. On the concert stage, past performances include engagements as a featured soloist with the Grant Park Music Festival, Seattle Symphony (Bellingham Music Festival), Calgary Philharmonic, Chicago Sinfonietta, NYC Opera's VOX Festival of New Music and Festival d'Art Lyrique, France. He is an alumnus of Lyric Opera of Chicago's Ryan Opera Center, Pittsburgh Opera Center at Duquesne, and holds a MMus. in Voice Performance from Manhattan School of Music.



Kevin Webb (Beadle) is absolutely giddy to be making his Theo Ubique debut. Kevin is a company member with Pride Films and Plays and has been

featured in their productions of *Songs From an Unmade Bed*, *Angry Fags*, *Design for Living*, *Under A Rainbow Flag* and *Bite*. Chicago credits: *The Secret Garden* (Court Theatre); *Sweeney Todd* (Porchlight); *Marie Christine* and *Myths & Hymns* (BoHo); *WOZ* (Victory Gardens); *Nevermore*, *Shockheaded Peter*, *Coraline* and *Amour* (Black Button Eyes); *The Resistible Rise of Arturo Ui* and *The Duchess of Malfi* (Trap Door); *The Pitchfork Disney* (Interrobang); *Assassins* (The Viaduct).



Missy Wise (Ensemble/ Mrs. Lovett U/S) is thrilled to be making her Theo debut with such an incredible cast! Chicago credits include: *Bonnie & Clyde* (Blanche

Barrow), *Little Fish* (Charlotte US), *Big Fish* (Sandra Bloom), *Amour* (Claire), *24 Words* (Rosie), *Guys & Dolls* (Martha/ Adelaide US), *Legally Blonde* (Judge), *Hair* (Dionne). Other regional credits include: *Into the Woods* (The Witch), *Bonnie & Clyde* (Blanche Barrow), *Ragtime* (Mother), *Evita* ("Eva Peron"), *The Civil War* (Sarah), Elton John and Tim Rice's *Aida* (Amneris). Missy was the 2016 Grand Prize Winner of the National Musical Theater Competition sponsored by the National Association of Teachers of Singing. www.missywise.com

ABOUT THE DIRECTORS

Fred Anzevino (Director) is Co-founder/ Artistic Director of Theo Ubique Cabaret Theatre. He has been producing-directing for Theo here at No Exit Cafe since 2003 making this intimate cabaret space a “home” for himself and hundreds of other Chicago theatre artists. Fred is thrilled to be directing *Sweeney Todd* with this incredibly talented group of people. 2017-2018 is our final season of programming here at No Exit Cafe and Fred would like to thank our patrons, donors, subscribers and the entire Rogers Park community for all the love and support you’ve shown us throughout the years. We hope that you will continue to show us your love and support as we prepare to move into our new home at 721 Howard Street Evanston, Illinois in September 2018. Thank you and enjoy the show!

Courtney Crouse (Assistant Director) most recently directed Theo Ubique’s production of *The Honky Tonk Angels* and co-directed last year’s *Newley-Bricusse Songbook* with artistic director, Fred Anzevino. Other directing credits include *Big Fish*, *A Marvin Hamlisch Songbook*, *Always Patsy Cline*, *Almost Heaven: The Songs of John Denver*, *Big River*, *Million Dollar Quarter*, *Pump Boys and Dinnettes*. and *Shout: The Mod Musical*. Many thanks to Fred and Mom and Dad

Jeremy Ramey (Music Director, Pianist and Arranger) is a concert pianist, conductor and music director based in Chicago. For 2017, Jeremy received his eighth non-equity Jeff nomination and fourth Jeff Award for his music direction on *Most Happy Fella* with theater company Theo Ubique. He received previous Jeff awards for *Light in the Piazza*, *Smokey Joe’s Cafe* and *Rent*. Also in 2016, he won his second Broadway World Award for Music Direction

for his work on *Bette*, *Live at the Continental Baths* with the production company Hell in a Handbag. Some of his favorite projects include *War Paint* at the Goodman, *Altar Boyz* at Downtown Drury Lane, *Forever Plaid* at Drury Lane Oakbrook and *Cats* with Marriott Lincolnshire. He received his training in piano performance at Rhodes College, Northwestern University and The Juilliard School of Music. Jeremy thanks the wonderful cast and crew at No Exit for all their great work and, especially, Theo’s artistic director, Fred Anzevino, for the opportunity.

James Beaudry (Choreographer) has staged over 50 productions for Timber Lake, his credits include the world premieres of *Mark Twain’s Blues* (Off-Broadway) and *Jason & Ben* (New York Musical Theatre Festival). Chicago credits include: *Meet John Doe*, *Babes In Arms in Concert*, *Miracle on 34th Street* and *Best Musical!* (Porchlight Music Theatre), *Aspects of Love* and *Pump Boys & Dinnettes* (Theo Ubique Cabaret Theatre), *Lucky Stiff* and *Triumph of Love* (The Music Theatre Company), *The Wedding Singer* (Haven Theatre), *Other Desert Cities* (Theatre of Western Springs). Additional credits include *West Side Story* (CUNY 50th Anniversary Production), *Cosi* (The Lee Strasberg Theatre Institute), *Big Fish*, *Sunset Boulevard*, *Chicago*, *Fiddler on the Roof*, *The Wiz*, *Into the Woods*, *Anything Goes*, *Pippin* and *The Secret Garden*. Peer reviewer: Oxford University Press, Music and Dance Division. MFA, Mills College. BA, The College of Wooster.

ABOUT THE CREW

James Kolditz (Lighting Design) is so excited to be returning to the team at Theo Ubique. Recent work includes *Big River*, *Big Fish*, *Greater Tuna*, *Les Mis*, *Rumors*, *Young Frankenstein*, *An Inspector Calls*, *Joseph and the Amazing Technicolor Dreamcoat*, and *S'Wonderful* (Timber Lake Playhouse). James recently completed his B.A. in Directing at the Conservatory of Theatre Arts at Webster University.

Mina Slater (Production Stage Manager) hails from San Francisco, attracted by the Windy City's vast theatre and circus scene. Shortly after landing in Chicago, she joined Emerald City Theatre, where she has worked for the majority of the last 2.5 years, spending most of her time at Broadway in Chicago's Broadway Playhouse, where she is running *Schoolhouse Rock Live!* this summer. Previously, she worked with a variety of exciting companies, including Ringling Bros. and Barnum & Bailey (tour), Cirque Voila (tour), Teatro Zinzanni San Francisco, Joe Goode Performance Group and Disney Entertainment. Thanks to her husband's hard work and persistence, she was able to quit her day job recently and pursue stage management full time.

Ben Lipinski (Scenic Design and Construction) is a recent graduate from The Conservatory of Theatre Arts at Webster University. He is terrifically excited to bring to life his first scenes here in Chicago. *Sweeney Todd* is his first production here at Theo and he'd like to thank Fred and the Rogers Park community for sharing this evening. Recent works include *Guys and Dolls* at Willmette Park Theatre. *Big Fish* and *The Odd Couple* at Big Noise. The 66th season at The Timberlake Playhouse including *Big River*, *Peter Pan*, and *Greater Tuna*.

Bill Morey (Costume Design) has costumed many shows at Theo including the Jeff winning productions of *Always...Patsy Cline*, *Passion*, *Smoky Joe's Cafe*, *The Light in the Piazza*, and *Chess*. Bill is a eleven time Jeff Award nominee, and a three time Equity

Jeff winner. He is also the recipient of two After Dark Awards and the BroadwayWorld Award for costume design. www.billmorey.com

Aji Slater (Properties Design) is ecstatic to be making *Sweeney Todd* his first production with Theo Ubique. He has built props for Sourdough Productions, Ringling Brothers & Barnum and Bailey Circus (with the clowns) and Emerald City Theatre (Chicago), to name a few. These are the best pies in Rogers Park, he should know, he made them.

Darren Hill (Dialect Coach) has been living in Chicago for over four years now and is loving the city and all it has to offer. He is currently appearing in *Junie B. Jones* at The Apollo Theatre. Darren is extremely excited about continuing his career stateside in 2017 and couldn't have a better help than being represented by Stewart Talent. Darren trained at The Bristol Old Vic Theatre School, where he played Captain Cat in "*Under Milk Wood*" and Polonius in "*Hamlet*". He has toured the UK extensively performing outdoor classics such as, "*Much Ado About Nothing*" playing Claudio, "*Importance of Being Earnest*" playing Jack and "*Macbeth*" playing Macduff.

R&D Choreography (Violence Design) is Victor Bayona (he/him/his) and Rick Gilbert (he/him/his), who are thoroughly jazzed to be working once again with the talented folks at Theo Ubique! R&D was founded in 1997 for the purpose of improving the power and effectiveness of Chicago area theatre through the art of violence design – choreographing better fights for better shows! We have designed violence for over three hundred productions and films, and taught stage combat at universities, theaters, and privately. Our work has been seen at dozens of Chicago area theatres, including 16th Street, Akvavit, ATC, Bailiwick, Chimera, Factory, First Folio, Griffin, Lifeline, Oak Park Festival, The Paramount, Pegasus, Piven, Steep, Strawdog, Theatre at the Center, and Vitalist. Check us out at www.fightshop.org!

DONATING TO THEO UBIQUE FOR THE 2018-2019 SEASON

Your support helps us maintain our high standards of producing quality productions and the costs of managing the phenomenal growth we've experienced in recent years – all thanks to you, our wonderful patrons. Now is the perfect time to donate. By doing so, you'll help us round out our 2017-18 season on a high note, and you'll experience all the benefits during the entire next season. Theo Ubique Cabaret Theatre is a 501(c)(3) non-profit theatre company incorporated in the State of Illinois. Donations are tax deductible.

Theo Ubique Cabaret Theatre is a 501(c)(3) non-profit theatre company incorporated in the State of Illinois. Donations are tax deductible.

Executive Producer's Circle: \$5,000+

2 tickets for the next 4 productions, reserved seating at all performances, and program listing.

Producer's Circle: \$2,500-4,999

2 tickets for the next 4 productions, reserved seating at all performances, and program listing.

Associate Producer's Circle: \$1,000-2,499

2 tickets for the next 3 productions, reserved seating at all performances, and program listing.

Director's Circle: \$600-999

2 tickets for 2 productions in the 2017/18 Season, priority seating at all performances and program listing.

Patron's Circle: \$250-599

2 tickets for 1 production in the 2017/18 Season, priority seating at all performances and program listing.

Sponsor's Circle: \$100-249

Priority (best available) seating at all performances attended and program listing.

Donor: Any amount up to \$99

Program listing.

DONORS

We are thrilled by the support of our generous patrons and benefactors. The following represents gifts made between March 1, 2017 and February 28, 2018.

Executive Producer's Circle: \$5,000+

Anonymous
Bayless Family Foundation
Ann and Richard Carr
Lorraine Dostal
Jean Klingenstein
MacArthur Fund for the Arts
and Culture
Sue Suchy

Producer's Circle: \$2,500- 4,999

Mary Alice and Peter J. Costello
Jonathan Klein and Susan
Cohn
Gerry Smith and Stephane
Zalatan
Farrel Wilson and Philip
Marienthal

Associate Producer's Circle: \$1,000-2,499

Fred Anzevino
Cynthia Barnard & Leonard
Grossman
Carol and Alan Ross Barney
Shaun and Andy Block
Martha L. Campbell
Suzann R. Campbell and James
B. Delapp
Mr. and Mrs. Keith Clayton
James Dicks and James
Differding
Feitler Family Fund
Jill Gardner
C. Gary & Virginia Gerst
Arnie and Debbie Johnston
Latkin Family Foundation
Paul and Patty McCarthy
Alice and Gregory Melchor

Sarah Meyer and Charles
Brooks

William F. Myers
John A. Shea
Sophia Sieczkowski
Lisa and Randy White
Gary Willer
Ann Winship

Director's Circle: \$600-999

Bob and Emily Carroll
Judge Thomas Chiola
David Heimann
Susan Klingenstein
Helen L. Morrison
Robert and Barbara Richards
Julian and Carolyn Steinberg

Patron's Circle: \$250-599

Anonymous

Sweeney Todd

DONORS CONT.

Richard and Andrea Amend
 Mary Bao
 Daniel Bender
 Phyllis and Leonard Berlin
 Carol Black
 Etahn Cohen
 Jeffrey Colman and Nancy
 Loeb
 Elinor and Conway Dahmer
 Elaine Disch
 Carol Eastin
 Cathleen Finn
 Theodore Gehrig
 John Green
 Jack and Sandra Guthman
 Foundation
 Linda and Robert Hauser
 James Hogan
 Ann Holmes
 Hillis Howie, Jr. and Margaret
 Shaklee
 Martha Hudak
 Vincent Hurd Fund
 Dolcye and Rod Johnson
 Susan Lannin
 Fran and Chuck Licht
 Susan and Alan Melsky
 Dan and Michele Miller
 Floyd Mittleman Trust
 Harvey Nathan and Lisa Kohn
 O'Brien & Gere Engineers, Inc.
 Karla D. Petersen
 Barbara Provus and Fred
 Wackerle
 Pat Shaw
 The Saints
 Barry Walvoord
 Phil Whittemore
 Nancy & Bruce Woodruff

Sponsor's Circle: \$100-249

Melissa Allen
 Lloyd and Rita Allison
 Arleen Alter
 Marilyn and Charles Arbetter
 Erik Archambeault
 Susann Ball
 Maria and Steven Ballantyne
 Carol Bass
 Daniel Bender
 William and Susan Berg
 Carol Berger
 Allan and Jan Bergman
 Dr. and Mrs. Leonard Berlin
 Carol Black
 Nancy and James Brandt
 Michael and Amy Brown
 Paul Brown

Robert Breving
 Brenda Burton
 Karen A. Callaway
 Suzann Campbell
 Sharon and Richard Carlson
 Charmer's Cafe
 Norine Chiu
 Lawrence Choate
 Robert and Isabel Curley
 Jean and Mark Dabrowski
 Laurie and Bruce Davidson
 Anne and Ronald Decker
 Audrey Dickes
 Lisa Disch
 Douglas Dixon
 Alice Eagly
 Susan Foster
 Richard Eisenhart and Valerie
 Stodden
 Jay and Elissa Fisher Gift Fund
 Diane and Michael Faruta
 Vincent Flood
 Dan and Judy Giovannetti
 Lawrence Gordon
 Juris Graudins
 Susan & Anthony Grosch
 M Hahn & Francis M. Wade
 Monica Heenan
 Harold Hindsley
 Brad Hopkins
 Mary Hopkins
 James Huttenhower
 Nancy S. Johnson & William J.
 Gordon
 Paulette Jacobsmeier
 James Karela
 Erin and Robert Kato
 Paul Kobasa
 Judith and Robert Kucera
 Jeanne LaDuke
 Victoria Shaw Lautman
 Joanne and Craig M. Leslie
 Jerry and Jan Loew
 David Marienthal
 Robert Martin
 Mindy Mates
 Richard & Marilyn Maxen
 Kate McQueeney and Jack
 Franaszek
 Cheri and Henry Meisels
 Dan Miller
 Linda Ann Miller
 Richard and Maribeth Murphy
 Alison Nelson
 Charlotte Newfeld
 Janet and Robert Oplawski
 James Ossyra
 Brian C. Owen

Gary and Dorothy Peck
 David and Carole Perlman
 Jerry Proffit
 Joann and John Rea
 Peter and Margrit Reinhard
 Dale and John Roberts
 Ted Roseman
 Emily Rosenberg
 Ann and Stephen Ross
 Julius M. Rothschild
 Craig Samuelson
 Mary Sliwinski
 Suzanne Smart
 Gary Snyderman
 Jerry and Roxann Specht
 Richard Straub
 Gail and Ted Struve Charitable
 Fund
 Carol Stueky
 L.G. Surlak
 Kathleen Smith and Caesar
 Tabat
 Bob Tannenbaum
 Anne and Gregory Taubneck
 Judith Tuszynski
 Betsy Vandercook
 Belle Waldfogel
 Robert J. Weiler
 Carole and Phil Whittemore
 James Wicklund
 Keven Wilder
 Susan Wishnick
 Nancy Woodruff
 Tina Yarovsky
 Susan K. Young

Donor: Under \$100

Anonymous
 Irene and Gerald Adler
 Karen Behles
 Ann Bergart
 Marianne Benveniste
 Jonathan Black
 Jessie Bylander
 Robert Cachur and Cheryl
 Janusz
 Karen Callaway
 William and Mary Carstedt
 Patricia Curtis
 Majel Cuza
 Dorothy Dare
 Major George F. Dempsey,
 USAF (Ret).
 Mary Jo Deysach and Francis
 Lynch
 Carol Drowne
 Myra Epping
 Susan and Martin Fine, M.D.

DONORS CONT.

Mary and Richard Freeman
James Block and Ruth Fuerst
Georgan Goldenberg
Jill and Stuart Gordon
Lawrence Gordon
Merle Gross
Robin Heiss
Ann and Jim Hogan
Mr. and Mrs. Edward Hollander
Lita Hoover
Madeleine Juul
Felicia Kasa
Barry Katz
James King

Kathleen Lamb
Maria Mandler
Richard K. Means
Patricia and Richard Medema
Andrea Miller
Claudia Moorehouse
Susan Murphy
Geryl Murray
Cynthia Nelson
Maggie O'Keefe
Patricia O'Neal
Gary and Dorothy Peck
Marcus Petrella
Donna and Thomas Ray

Mary and Allan Reisberg
Mitch Rogers
Barbara and Daniel Roos
Gerardo Rutigliano
Anthony Scheurich
Robert Schnuckel
Karen Shankman
Barry Stern
D.E. Tamosauskas
Donna Urlaub
R. Todd Vieregg
Deborah and Neil Warner
Marcia Wilson

A LETTER FROM THE ARTISTIC DIRECTOR

Dear Friends:

After thirteen memorable years at the No Exit Cafe, Theo Ubique has been given a tremendous opportunity. In partnership with the township of Evanston, we will be moving into our own facility just a mile away. Our current season will be our last in what has been a very special home for us.

We are inordinately proud of Evanston's belief in the Theo Ubique experience of intimate community built around dining together and high quality cabaret productions.

I am keenly aware that these exciting changes are in no small part due to the loyal and supportive base that we have built here at No Exit Cafe. So let me take this opportunity to thank you. Thank you telling your friends about us, for sharing your experiences on social media and most importantly for being the key ingredient of a great night of cabaret - the audience.

In the coming months, you will receive more news about our upcoming and final season at No Exit, about our plans for the future and about ways in which you might help. We can't wait to share these updates with you. But for now, thank you for being here and enjoy the show.

Fred Anzevino
Artistic Director
Theo Ubique Cabaret Theatre



CHICAGO

THEOUBIQUE

CABARET THEATRE

Theo Ubique began producing in 1997, first at the Heartland Studio Theatre, and then in 2004, at Michael James's No Exit Café, where it began focusing on musicals and revues, reigniting the cabaret theatre trend in Chicago. Since then, Theo Ubique has produced 40 shows and received more than 30 Jeff Awards and 3 After Dark Awards. The name THEO UBIQUE (pronounced thee-oh oo-bah-kway) is a combination of Greek and Latin words reflecting the company's mission to engage actors and audience in an intimate and honest conversation with great theatrical works. Theo Ubique is dedicated to making its home in the Rogers Park neighborhood and is a proud member of the Glenwood Arts District. For more information, visit www.theoubique.org.

BOARD OF DIRECTORS

Farrel Wilson, <i>President</i>	Jean Klingenstein
Lorraine Dostal, <i>Secretary</i>	Sarah L. Meyer
Dick Moran, <i>CPA, Treasurer</i>	Jeremy Ramey
Fred Anzevino, <i>Co-Founder/Artistic Director</i>	Sue Suchy
David Heimann	Stéphane Zalatan, <i>P.E, President Emeritus</i>
Joslyn Jones	

STAFF

Artistic Director	Fred Anzevino
General Manager	Adam Webster
Company Manager	David Heimann
Box Office Manager	Rebecca Butler
Audience Relations & Season Sales	Amy Johnson
Publicist.....	John Olson
Bookkeeping.....	Elliott Fredland

THEATRE INFORMATION

Ticket Services

800-595-4849

Information Line

773-347-1109

Mailing Address

Theo Ubique Cabaret Theatre
1751D West Howard Street, #294
Chicago, IL 60626

Online

www.theoubique.org

**Check us out
on Facebook!**