



PRESENT

PIPPIN

music and lyrics by **Stephen Schwartz**

book by **Roger O. Hirson**

produced by special arrangement with Music Theatre International

DIRECTOR'S NOTES

I am writing these notes to you weeks away from our opening performance and anticipate the exciting and moving experience our audience will have in the Lunt-Fontanne Theatre. Bringing the talents of Lake Country Playhouse and University of Wisconsin together on this show has proven to be a very valuable and fruitful experience. I have made new friends and been allowed to collaborate on creating a beautiful piece of art for my community. *Pippin* has become a mainstay of the musical theatre scene for over forty years. In fact, several members of our company have worked on this show in the past — some originally playing youthful roles and now graduating to mature characters. Others have revisited the work with wonder and joy as if discovering an old friend in the rehearsal process. The story of *Pippin* takes us on a journey of a young person attempting to find their *Corner of the Sky* — that place that we all seek that is the right fit for us. Our “rights of passage” journeys are often stormy as we seek *Glory* — some mythic, elusive, and amazing accomplishment that consumes us as proof that we are worthy of adulthood.

Fortunately, we meet good, brilliant people who steer us toward the best within ourselves. I guess what I am getting at is that we all experience a *Pippin*-like journey. At some point most of us figure it out — the *Extraordinary* is found in the ordinary. Sharing cookies with people. Learning a dance, swapping stories and joining in on a song together. A fantastic conversation. Special celebrations where we dance, or a gentle touch and smile of a true love. Great art speaks to us in profound ways, if we listen. I felt the presence of the play in a quiet moment at dawn, as a *Morning Glow* offered the hope of this day, with all of the possibilities that lie ahead for us. The world is still a good place and even better with each of us as a full participant. *Pippin* reminds us of those lessons, when we find ourselves in the shadows, and the rushing crush of the cruel world surrounds our tender hearts.

Thank you for coming, you are welcome here in this community. We've got *Magic to Do* — just for you!

Steve Decker
Co-Director

SETTING

Time: 780 A.D. and thereabouts

Place: A representation of The Holy Roman Empire and thereabouts

MUSICAL NUMBERS

ACT I

Scene 1

Magic to Do Leading Player and the Company
Corner of the Sky Pippin

Scene 2

Welcome Home Charles

Scene 3

War is a Science Charles and Players
Glory Leading Player and Players

Scene 4

Simple Joys Leading Player
With You Pippin
No Time at All Berthe

Scene 5

Spread a Little Sunshine Fastrada
Morning Glow Pippin and Players

15 Minute Intermission

ACT II

Scene 1

Right Track Leading Player and Pippin

Scene 2

There He Was Catherine
Kind of Woman Catherine and Players
Extraordinary Pippin
Prayer for a Duck Pippin and Theo
Love Song Pippin and Catherine
Corner of the Sky (reprise) Pippin
I Guess I'll Miss the Man Catherine

Scene 3

Finale Leading Player and the Company

CAST BIOGRAPHIES



Romesh Alex Jaya* **(Leading Player)**

Romesh is thrilled to be making his Lake Country Playhouse and UW-Milwaukee, Waukesha debut in

Pippin as the Leading Player. As a student at UW-Milwaukee, Romesh has been in three productions put on by the Peck School of the Arts: *Women on the Verge of a Nervous Breakdown*, *(Anon)ymous* and most recently *9 to 5*. Outside of UWM, Romesh was also in Milwaukee Rock Theatre's production of *American Idiot*. Romesh is beyond grateful to be a part of such a talented, hard-working cast and crew, and hopes that you enjoy the show. Much love to my family and friends for their endless support - Mom, this one's for you!



Allan Zablocki* **(Pippin)**

Allan is ecstatic to return to the Waukesha campus for *Pippin*! He received his BFA in musical theatre from

the University of Wisconsin Milwaukee. Along with performing in different musical productions in the area, he is a choreographer at Muskego High School and a dancer with Dnipro Ukrainian Dance Ensemble. Hope you enjoy the show!



Ashley Sprangers **(Catherine)**

Ashley Sprangers (Catherine) is delighted to be performing for the first time with UW-Waukesha. Recent

productions include *First Date* (music director) and *Bridges of Madison County* (ensemble) at LCP, *The Hunchback of Notre Dame* (Florika) and *The Light in the Piazza* (Franca) at Waukesha Civic, and *Beauty and the Beast* (Mrs. Potts) at West Performing Arts Center. She'd like to thank Sandra,

Cathy and Steve for this incredible opportunity and her friends and coworkers for the unending support.



Caleb Cady (Theo)

Caleb is pleased to be playing the role of Theo! Previous shows include *Les Miserables*, *The Lion, The Witch, and The Wardrobe*, and *The*

Wizard of Oz, and was featured in The Jerry Awards performance. He enjoys playing football, basketball, and wrestling in his free time. Caleb would like to thank his directors for this awesome opportunity and his cast-mates for being so nice and welcoming!



Mike Travia (Lewis)

Michael serves as the choir director at Waukesha South High School and has been performing and directing in

southeastern Wisconsin for nearly twenty years. Favorite theatre credits include Thenardier in *Les Miserables* and Neville Craven in *The Secret Garden* (both at Waukesha Civic Theatre), Police Sergeant in *The Pirates of Penzance* (Storyteller Theatre), Roger de Bris in *The Producers* and Pilate in *Jesus Christ Superstar* (both with Shorewood Players), and Sir Galahad in *Spamalot* (Lake Country Playhouse). Michael earned a Bachelors of Music degree in music education and theatre arts at UW-Stevens Point.



Karl Miller **(Charlemagne)**

This is Karl's UWW/LCP debut. Karl has been working as a Professional Actor, Dancer, Singer, Teacher,

Choreographer and Director for over 35 years in Milwaukee and surrounding areas

with many Theater Companies that include In Tandem, Skylight Music Theatre, Off The Wall, UW-Milwaukee and Sunset Playhouse just to name a few. Karl is a proud recipient of 15 Jerry Awards and was the 2014 Jerry Award Hall of Fame Inductee for excellence in High School Musical Theater. Shake your Tambourine and enjoy the show!



Kelly Kuczowski (Fastrada)

Kelly is very excited to make her debut with Lake Country Playhouse and UW-Milwaukee-Waukesha

production of *Pippin*! She was last seen on stage as the darkly delicious Morticia in the Lakeland Players 2017 production of *The Addams Family*. She thanks her family and friends for their support of her love of performance, and the opportunity to run away with the circus and perform under the big top.



Maggie Wirth (Berthe)

Maggie Wirth was last seen as Madame Pernelle in *Tartuffe* at SummerStage this season. Previously, she performed as Lady

Bracknell in *The Importance of Being Earnest* (SummerStage) Ouiser in *Steel Magnolias* (Sunset Playhouse) Olive in *The Women of Lockerbie* (UW-Waukesha) and Gertrude in *Little Wars credits* (Beautiful Soup Theatre, NYC) Musical include Jeanette in *The Full Monty* and Mona in *The Best Little Whorehouse in Texas*.



Jacob Allen (Player)

is pleased that you all can join us for this wonderful production of *Pippin*. This show is very dear to him as he played the titular role a

few years back at Waterford Union High

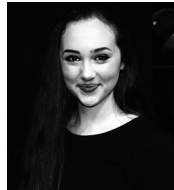
School and is thrilled to be a part of the magic again in a different capacity. Jacob has continued to train as a performer studying music at Southwestern Community College, in Creston, IA. He plans on following his dreams and hopes they lead him to the stages of Broadway!



Benjamin Gienke* (Player)

Benjamin Gienke is honored to be in the ensemble for *Pippin*. He is currently a student at UW-Waukesha and will

continue his theatre studies on the Milwaukee campus. He has performed in the previous plays on the Waukesha campus this season playing Big Stone in *Eurydice* and various roles in *too much light makes the baby go blind*. He is thankful to his directors for giving him this wonderful opportunity.



Eleanor Hannan (Player)

Eleanor is thrilled to be a part of this production! Favorite roles include Wednesday in *The*

Addams Family, an ensemble member of *State Fair* and *The Bridges of Madison County*, and Magical 3 in *Lovable Dragon*. Earlier this summer, Eleanor was one of 60 students nationwide to study musical theatre with the Open Jar Institute in New York City. Enjoy the show!



Hannah Hinners (Player)

Stepping for the first time onto the stage at UW-Milwaukee-Waukesha, Hannah gladly reprises an

ensemble role in *Pippin* after discovering the show her freshman year of high school. Now a graduate, Hannah plans to study for her BFA at the American Musical and

Dramatic Academy in LA. Some of her more notable recent roles are Luisa in *The Fantasticks*, Lieutenant Rooney in *Arsenic and Old Lace*, and the Jesty in *Once Upon a Mattress*.



Joseph Hoelzer (Player)

Joseph is a superfluous positive player who is ready to thrill the audience during this show, his second musical production! After his

short but spectacular career as a thespian he will be attending UW-Milwaukee to study kinesiology and become a health guru.



Alyssa Proell (Player)

Alyssa is a 16 year old student at Arrowhead High School. She is thrilled to have been cast as one of the Players in this production of *Pippin*!

Alyssa has been in many productions and always loves each new experience. Some of

her favorite past roles include Young Bonnie in *Bonnie & Clyde*, the Baker's Wife in *Into the Woods*, Ursula in *The Little Mermaid* and Emily Gibbs in *Our Town*. When not onstage, Alyssa spends her time singing, songwriting, playing the piano, and hanging out with friends. She thanks her family and friends for their never-ending love and support as well as the directors for helping her to continue to learn and grow! She hopes you enjoy the show!



Olivia Rasa* (Ensemble)

Olivia has been involved with theatre since January 2018 and is a current student on the

UW-Milwaukee-Waukesha campus. She has plans of transferring to UW Milwaukee in the fall of 2019 to continue pursuing theatre education. She is excited to be involved with *Pippin*!

PRODUCTION BIOGRAPHIES

Steve Decker* (Co-Director, Scenic Design) is an Associate Professor of Theatre here on campus and has lead the program for the past ten years. He is proud of the wonderful collaborations on the *Pippin* team. Some of his favorite productions here include last spring's beautiful *Eurydice*, the musicals *Urinetown*, *Oliver!*, and *Kiss Me Kate*, and wonderful straight plays such as *The Three Musketeers*, *She Kills Monsters*, and *My Antonia*. Professor Decker holds an MFA in Stage Direction from Indiana University and worked professionally in Chicago for six years prior to his academic career.

Sandra Renick (Co-Director) Sandra studied acting, dance and directing, with a degree in Theatre. Past directorals at UWW include *Almost Maine* and *The Good Doctor*. At LCP a few favorite directorals

are *Sweeney Todd*, *Assassins*, *Parade*, and *Bridges of Madison County* alongside the very talented Breanne Brennan and Cathy Pfeiler. Sandra is very excited to collaborate on this amazing project combining the talents of LCP and UWW with Steve Decker and finally Ryan Cappleman to bring to you *Pippin* at the beautiful Lunt-Fontanne Stage.

Ryan Cappleman* (Choreographer) is a performer, choreographer, music director, and teaching artist based in Milwaukee. He is on staff at the Skylight Music Theater as the Resident Education Music Director. Ryan works frequently at Danceworks, First Stage, Shorewood High School and beyond! He has received two Footlights Awards for Outstanding Choreography,

PRODUCTION BIOGRAPHIES CONT.

and numerous Jerry Awards (formerly the Tommy's) for his work in area high schools. Previous UW Waukesha credits include *Avenue Q* (Director/choreographer), *Kiss Me Kate* (choreographer), *Oliver!* (choreographer/Fagin), and *Little Shop of Horrors*. Much love to the Double Deckers and this delightful company! Catch him at Third Avenue Playhouse in Door County this fall in *Billy Bishop Goes to War*, and his choreography in *Hairspray* this holiday season at Skylight!

Catherine Pfeiler (Music Director) is a long-time music educator who now brings her passion for music and theater to the Lake Country Playhouse. She has served as music director for many of their notable musical productions in recent years including *Bridges of Madison County*, *1776*, *Assassins*, *Parade* and *Bonnie and Clyde*. Cathy has enjoyed her continuing partnership with Director Sandra Renick and her new partnership with director Steven Decker and the staff here at the UWW. Catherine has a long history with the musical *Pippin* having lead the production at Sturgeon Bay and Arrowhead High Schools. She credits all the wonderful student who collaborated over the years!

Jazmin Aurora Medina (Costume Designer) Jazmin Aurora Medina is a professional costume designer, wardrobe and wig and make-up artist active in both Wisconsin and Illinois. This will be

her sixth show at UW-Waukesha, with her previous show *Eurydice* being selected to be exhibited nationally at USITT and internationally at the Prague Quadrennial in 2019. Previous professional credits have included the Milwaukee Chamber Theatre, Florentine Opera, and First Stage Children's Theatre. Her portfolio of previous work and upcoming projects can be seen at www.jazminaurora.com.

Margot Lange* (Stage Manager) Margot is a local artist and performer who is currently exploring the many avenues that theatre has to offer. This is her first collaboration with LCP and she is elated to be involved in another UW-Waukesha production after a successful directorial debut with *Eurydice*. Margot is looking forward to what the future has to offer as she continues her theatrical education and career and will next be working with The Florentine Opera as a wig and makeup artist. She would like to thank the amazingly talented cast and crew for all of their hard work. Enjoy the magic!

Morgan Brenner (Lighting Design) Morgan hails from New York City where he is currently an IATSE Stagehand. He is delighted to return to the Lunt Fountanne Theatre for his 5th lighting design here in Waukesha. Previous designs include: *The Women of Lockerbie*, *The Grand Guignol*, *The Three Musketeers* and *ColumbinUs*.

PRODUCTION TEAM

Properties Artist Megan Munro
 Master Electrician Adam Jermain*
 Sound Operator Jessica Mayer*
 Stage Crew Olivia Rasa, Marissa Holcomb*
 Box Office Manager Bethany Kreiter*
 Theatre Arts Marketing Liaison Candace Decker*

*current or former UW-Milwaukee student or staff

ORCHESTRA PIT MUSICIANS

Flute/Clarinet/Saxe	Blair Bielawski
Piano	Julie Fraleigh
Bass.....	Keith Raleigh
Guitar	Brian Kummer
Percussion	Ken Marchand
Cello	Lindsay Patterson
Piano	Tammy Tissicino

SPECIAL THANKS

Sharon Sohner – Waukesha Civic Theatre (gloves), Quantegy Laboratory, Celebrations Entertainment, James Baker Photography, Brenda Dugan (administrative support), Marilyn Lilley (administrative support), Heather Patterson (prop assistance), Zane Holcomb (painting), Adam Steffan – Wauwatosa West HS (feather fans), Carrie Johnson – Oconomowoc HS (feather fans), Mike Travia and Ashley Sprangers (additional rehearsal accompaniment), Skylight Music Theatre

UPCOMING EVENTS

Love/Sick, UW-Milwaukee, Waukesha Campus

A collection of slightly twisted hilarious short plays by the writer of *Almost, Maine*, John Cariani. *Love/Sick* is set in a wacky suburban world exploring the joy and pain of being in love through the hearts and minds of imperfect lovers and dreamers.

Auditions: September 10 and 11 | **Performances:** October 19, 20, 25 and 26

Red Herring, at Lake Country Playhouse

Three love stories, a murder mystery, and nuclear espionage plots converge in this exceedingly funny noir comedy about marriage and other explosive devices.

Performances: October 5-21

UW-Waukesha Symphonic Band

Lunt-Fontanne Theatre, UW-Waukesha. Tickets will be available in the box office of the Lunt-Fontanne Theatre up to one hour prior to the start of the concert. \$5 admission for all.

Performance: Friday, November 16, 7:30 p.m.

UW-Waukesha Orchestra & Concert Choir

Lunt-Fontanne Theatre, UW-Waukesha. Tickets will be available in the box office of the Lunt-Fontanne Theatre up to one hour prior to the start of the concert. \$5 admission for all.

Performance: Friday, December 7, 7:30 p.m.

For additional information on music concerts, or to participate as a community musician contact Dr. Craig Hurst (craig.hurst@uwc.edu).

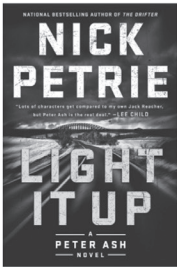
*Like our group pages us on Facebook for more information and to keep in touch:
Lake Country Playhouse and UW-Waukesha Theatre Department*



AMERICAN STORIES

November 2-3, 2018

A FREE book festival with over 70 authors and presenters

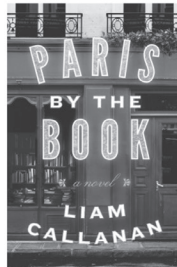


Keynote Novelist

Nick Petrie

Light It Up

Friday, 6:30 p.m.



Keynote Novelist

Liam Callanan

Paris by the Book

Saturday, 9:00 a.m.

Talks//Readings//Panel Discussions//Interviews//
Cookbook Stage// Live Art//Music//Exhibits//
Book Sales and Signings//Food// Free Parking

www.sewibookfest.com

1500 N. University Dr, Waukesha, WI 53188

TO SEE OR
NOT TO SEE?



LEAVE YOUR REVIEW OF THE
SHOW ON FOOTLIGHTS.COM

Help fill the seats of the next performance with a timely and favorable review to ensure that the arts will be here for the next generation.

- 1 BROWSE UPCOMING EVENTS ON FOOTLIGHTS.COM
- 2 USE FACEBOOK COMMENTS TO SHARE YOUR THOUGHTS!

