

INTERROBANG

THEATRE PROJECT

presents
the U.S. premiere of

Out of Love

By
Elinor Cook

Directed by
Georgette Verdin

LIGHTING DESIGN

Michelle E. Benda

DIALECT COACH

Elise Kauzlaric

SCENIC DESIGN

Sotirios Livaditis

HOUSE MANAGER

Mariah Schultz

SOUND DESIGN

Erik Siegling

TECHNICAL DIRECTOR

Evan Sposato

COSTUME DESIGN

Steph Taylor

STAGE MANAGER

Albert "Beep" Trefts

PRODUCTION MANAGER

Richie Vavrina

FIGHT & INTIMACY CHOREOGRAPHY

Claire Yearman

PRESS RELATIONS

David Rosenberg



5779 N. Ridge Ave.
Chicago, IL 60660

Notes from Director, Georgette Verdin

RARE

How often do you see a relationship between two women front and center in the theater? And, I don't just mean women as opposed to men. How often do you encounter a play that highlights, celebrates and prioritizes what happens in the space between women as its primary focus and selling point? *OUT OF LOVE* is a resonant and unapologetic distillation of a complex female friendship. And, brilliantly, Cook is able to examine the effects of a patriarchal society on these women without allowing the men to hijack their story.

RELEVANT

I'm confident you'll be hard-pressed to find a woman who can't relate to the story of Lorna and Grace. Cook has written a bold play that packs quite a punch in its taut 75 minutes. It's adventurous in form, blistering in pace and an absolutely necessary exploration of how real women mold and shape each other during their most influential years.

RAW

Growing up isn't for the faint of heart and the transition from adolescence to adulthood is often rife with experiences that are no less than confusing, but more often harrowing. Cook bravely exposes the underbelly of childhood by spotlighting uncomfortable corners where the embarrassing and cruel transpire. She invites us to reckon with our own versions of these dark tales and our own fraught friendships.

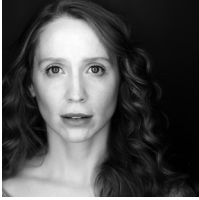
OUT OF LOVE was commissioned by Paines Plough and first performed on July 12, 2017 in Paines Plough's Roundabout at Theatre Clwyd.

This production has been licensed by arrangement with
The Agency (London) Ltd, 24 Pottery Lane, London W11 4LZ
e-mail: ehickman@theagency.co.uk

TIME - Spanning over three decades
PLACE - A town in the North East of England

Cast

Actor 1: Grace Laura Berner Taylor
Actor 2: Lorna Sarah Gise
Actor 3: George, Charlie, Leonard, Dad, Mike, Ted, Christopher, Sam, Boy Peter Gertas



? **LAURA BERNER TAYLOR** (Grace) has been a proud ensemble member of ITP since 2016, appearing in GRACE, STILL, and RECENT TRAGIC EVENTS. Recent credits include BOY (u/s TimeLine), DETROIT (TheatreSquared – Fayetteville, AR), THIS (u/s Windy City Playhouse), URBAN LOVE STORY (Black Ensemble Theatre), and A LIFE OF GALILEO (ETOPiA at Northwestern). She's also performed with Backroom Shakespeare Project in KING LEAR and LOVE'S LABOUR'S LOST. Television credits include THE CHI (Showtime) CHICAGO MED (2 episodes) and CHICAGO JUSTICE (NBC). She has a BFA in Acting from Santa Fe University of Art and Design and is represented by Big Mouth Talent. www.laurabernertaylor.com



? **SARAH GISE** (Lorna) has been a proud Interrobang Theatre Project ensemble member since February 2015. She holds a BFA in acting from the University of Southern California (USC) and in 2013 received the LA Weekly Best Actress Award for her performance in THE BELLE OF BELFAST. She is also a company member with New American Folk Theatre in Chicago, where she will make her directorial debut in November 2019. In addition to theatre, she has appeared in several web series, films, and commercials, and is a voiceover artist having narrated over two dozen audiobooks. She is happily represented by DDO Chicago. With ITP, she has appeared in REALLY REALLY, OWNERS, STILL, THE AMISH PROJECT (Nominated for a 2017 Joseph Jefferson Award), and FOR THE LOYAL. Sarah is beyond grateful to her Interrobang family, and is thrilled to have found such a wonderful artistic home.



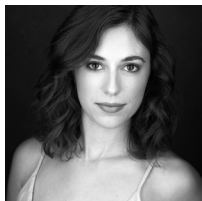
PETER GERTAS (Actor 3) was most recently in Lifeline Theatre's production of EMMA as Mr. Elton/Frank Churchill, as well as Griffin Theatre's production of IN TO AMERICA. Peter is a graduate of the Chicago College of Performing Arts and is so excited to be a part of this fantastic cast and crew. Enjoy the show!



NANCY PAYNE (u/s Grace) is so excited to be part of OUT OF LOVE. She performs with her local sketch/improv comedy group, The Supreme Court, at theatres around the city, including The Second City and iO, and is looking forward to expanding her performing skills with ITP. She has been part of the Interrobang team since 2017 as Marketing Director and has loved being part of such an inclusive and supportive group of people.



FRANK MONTERO (u/s Actor 3) This is Frank's second production in Chicago, first with Interrobang Theatre Project. He hopes it won't be the last. Like Whataburger, Frank Montero hails from Texas. In the last two months, he's hit the ground running, adjusting to big city life and working with incredible artists from all walks of life. He hopes to always find new and thought-provoking theatre that feeds the soul!



ASHLEY GREENWOOD (u/s Lorna) is thrilled to be working with Interrobang for the first time! Her favorite theatre credits include 1 2 3 (One) at Wayward Sisters Theatre Ensemble and BARBECUE APOCALYPSE (Glory) at The Cuckoo's Theatre Project. Other credits include, ALIAS GRACE (Mary Whitney U/S) at Rivendell Theatre Ensemble, THE AUDIT (Auditor) at The Barrrens Theatre Company, and I DON'T CARE: AN HOMAGE TO JUDY GARLAND, which she self-produced at Davenport's Piano Bar Cabaret. Ashley is represented by

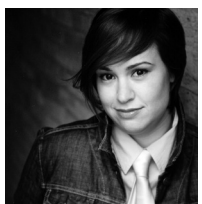
Big Mouth Talent.

Creative Team



ELINOR COOK (Playwright) was the winner of the George Devine Award 2013 for Most Promising Playwright and a finalist for the Susan Smith Blackburn Award 2018. Elinor is currently writing an episode of KILLING EVE series 3 and has recent commissions from Fiery Angel/Paines Plough and Audible. OUT OF LOVE, Elinor's commission for Paines Plough Roundabout Season, ran at the Orange Tree Theatre, having opened at the Edinburgh Fringe Festival last summer and then toured the UK. She was recently commissioned by the Donmar Warehouse to adapt Henrik Ibsen's THE LADY FROM THE SEA, which was directed

by Kwame Kwei-Armah for the Donmar's Autumn/Winter 2017 season. Previous work includes: EXTRA YARN (Orange Tree Theatre), PILGRIMS (HighTide Festival, The Yard, Theatre Clwyd), TEN WEEKS and IMAGE OF AN UNKNOWN WOMAN (Gate Theatre), THE BOY PREFERENCE (Royal National Theatre Connections 2015), THE GIRL'S GUIDE TO SAVING THE WORLD (HighTide Festival) and THIS IS WHERE WE GOT TO WHEN YOU CAME IN (Bush Theatre). For television: THE SECRETS, directed by Dominic Savage for Working Title/BBC1.



GEORGETTE VERDIN (Director/Artistic Director) has been working with ITP since 2014. She is also a freelance director, theater and speech educator and arts integration specialist. She was the founding theater teacher at Polaris Charter Academy, an Expeditionary Learning School in West Humboldt Park, where she taught full-time for eight years. Recent directing credits include Jeff recommended productions of GRACE and RECENT TRAGIC EVENTS by Craig Wright, the 2013 & 2016 Yale Drama Series winners, STILL by Jen Silverman and UTILITY by Emily

Schwend, and Jeff Recommended TIME STANDS STILL (AstonRep). Georgette has also recently been seen assistant directing with Lookingglass Theatre, Facility Theatre and Goodman Theatre. This coming season she will be associate directing Mat Smart's World Premiere, EDEN PRARIE, 1971 (Raven Theatre), assistant directing BERNHARDT/HAMLET (Goodman Theatre) and co-directing ITP's world premiere, SEXBOT. Georgette holds a Bachelor of Arts in Theatre Performance from McNeese State University in Lake Charles, LA and a Master in Directing from the Chicago College of Performing Arts at Roosevelt University. She is an associate member of Stage Directors and Choreographers Society.

MICHELLE E. BENDA (Lighting Designer) is thrilled to be designing her third show with Interrobang Theatre Project! She previously designed *UTILITY* and *I CALL MY BROTHERS* earlier this year. Lighting design credits include *EVERYBODY* (Brown Paper Box Co.), *Hamlet* (The Gift Theatre), *THE GENTLEMAN CALLER* (Raven Theatre), *DESIRE IN A TINIER HOUSE* (Pride Films and Plays); *BURY ME*, *OHIO STATE MURDERS*, (Dandelion Theatre), and *FAILURE: A LOVE STORY* (Illinois Theatre). She has assisted lighting designers at Goodman Theatre, Steppenwolf Theatre Company, Chicago Shakespeare Theater, and TimeLine Theatre Company. Michelle holds an MFA in Lighting Design and Technology from the University of Illinois at Urbana-Champaign.

BLAKE CORDELL (Master Electrician) returns to Interrobang Theatre Project as master electrician. He has also worked as master electrician at theaters such as Adventure Stage Chicago, *Pride*, *Haven*, *Firebrand*, and *Underscore*, and has been an electrician with numerous others. He graduated from Kansas State University with a B.A. in theatre and a B.A. in music back in 2017 and has since been working freelance in Chicago. To find out more both about Blake's electrical work and Blake's audio work, visit blakecordell.com.

ELISE KAUZLARIC (Dialect Coach) is happy to be working with Interrobang for the first time. She is a member of the artistic ensemble of Lifeline Theatre where she has coached numerous productions. Around town and regionally she has coached for Steppenwolf, Marriott, Timeline, Irish Theatre of Chicago, The Hypocrites, Griffin Theatre and The Michigan Shakespeare Festival among others. She has been twice nominated by the Jeff Committee for her dialect work on *BUSMAN'S HONEYMOON* (Lifeline) and *PUNK ROCK* (Griffin). Elise is also a director and actor and spends her days teaching at The Chicago College of Performing Arts at Roosevelt University and The Theatre School at DePaul University.

JAMIE KREPPEIN (Assistant Director) is a director, stage manager, educator, and scenic artist, as well as a recent graduate from Illinois Wesleyan University in Theatre Arts and English-Writing. She is thrilled to be working with Interrobang again as the assistant director for *OUT OF LOVE*, where she previously served as the Stage Manager for last season's production of *UTILITY*. Currently, you can also find her stage managing *GOLDEN GIRLS: THE LOST EPISODES, VOL. 3* with Hell in a Handbag Productions, and working with Facility Theatre, A Red Orchid Theatre, Chicago Children's Theatre, and Steep Theatre Co. as a props and scenic artist. Mostly, she's just trying to be 23 and a functional human being, so she is grateful to ITP for giving her an artistic home.

SOTIRIOS LIVADITIS (Scenic Designer) is excited to be working with Interrobang Theatre Project. Recent projects include *HANS CHRISTIAN ANDERSEN* (Northwestern University), *FOR SERVICES RENDERED*, *THE HARVEST* (Griffin Theatre), *SMALL WORLD*, *FUN HARMLESS WARMACHINE* (The New Colony), *LANGUAGE ROOMS* (Broken Nose Theatre) *HOODED, OR BEING BLACK FOR DUMMIES* (First Floor Theatre), *THE LIGHT FANTASTIC, 1980 OR WHY I'M VOTING FOR JOHN ANDERSON* (Jackalope Theatre). He was the associate scenic designer on *A MIDSUMMER NIGHT'S DREAM* (Chicago Shakespeare Theatre), *DJEMBE!* (Apollo Theatre) and *MADAMA BUTTERFLY* (Irish National Opera) with Todd Rosenthal. MFA - Northwestern University. Please experience more of his work at www.sotiriosdesigns.com.

MARIAH SCHULTZ (House Manager) is a critic, dramaturg, and script reader. She's previously worked with UrbanTheater Company, the League of Chicago Theatres, The Beat Theatre Collective, and Collaboration. She's curated play submissions for the Rockford New Play Festival (Rockford, IL), The Syndicate (Chicago, IL), Kitchen Dog Theater (Dallas, TX), and the Campfire Theatre Festival (Boise, ID). She graduated from The Theatre School at DePaul University with a B.F.A. in Dramaturgy/Criticism. She's worked on various productions as a dramaturg, deviser, and stage manager. Mariah currently manages the Chicago Theatre Triathlon, a website/blog that provides advocacy, education, and celebration of local companies, artists, and works.

EVAN SPOSATO (Technical Director) has spent the last two decades in and around the theatre as an actor, director, stage manager, technical director, and production manager. He spent eight years at the Waterville Opera House in Waterville, Maine, working both onstage and behind the scenes. During the Opera House's centennial renovation, he was the technical advisor to the building team and wrote grants totaling more than \$2 million. While in Maine, he served as the longtime president of the board of directors of Aqua City Actor's Theatre and worked with Bossov Ballet Theatre and Everyman Repertory Theatre. Since moving to the Chicago area, Evan has built shows for Jackalope, Cloudgate, Steep, City Lit, New Colony, and others. This is Evan's first show with ITP. When Evan isn't in a theater, he works with political campaigns on voter contact and digital outreach.

ERIK SIEGLING (Sound Designer) is pleased to be sound designing his fourth show with Interrobang. He recently designed for ITP's production of UTILITY this past spring. Last fall, Erik designed for The Comraads' production of WARRIOR CLASS, as well as several shows at Oakton Community College. He has also designed for Seattle Shakespeare Company in Seattle. An accomplished actor as well, Erik has guest starred on the TV show Z Nation, performed in theatres across the country, and has a B.A. degree in Theatre from Principia College.

STEPH TAYLOR (Costume Designer) is thrilled to be back working with Interrobang where she previously designed FALLING. She is a Chicago based costume designer that also loves to dabble in hair and makeup design. Credits include productions with Court Theatre, Filament Theatre, The Marriott Theatre, Northlight Theatre and Goodman Theatre. Steph is currently working with a program called After School Matters, teaching young Chicago actors about theatre and design.

ALBERT "BEEP" TREFTS (Stage Manager) is a Chicago-area stage and production manager. He is thrilled to be back with Interrobang, having previously stage managed THE NORTH POOL. His recent projects include THE RUSE OF MEDUSA and PHOEBE IN WINTER, both at Facility Theatre. Beep has also worked with Piccolo Theatre, Actors Training Center, Interrobang Theatre Project, Pride Films & Plays, and the URTAs in Chicago. He is a graduate of Hofstra University and member of the Piccolo Theatre ensemble. He is ever thankful to Lee.

RICHIE VAVRINA (Production Manager) is a production manager, scenic, and lighting designer. This is his fourth production with ITP, having worked as a lighting designer and production manager with them since last year. His work has been seen in productions by Firebrand Theatre, Elgin Community College, and Muse Theatre Collective, among countless others. He works as a draftsman and render artist by day.

CLAIRE YEARMAN (Fight & Intimacy Choreographer) is an ITP company member. She is a member of The Society of American Fight Directors and is the current Great Lakes Regional Representative. She is also a member of Intimacy Directors International. Claire works as an actor, fight & intimacy choreographer, and as a Certified Teacher with the SAFD. She has an MFA in Acting from Western Illinois University. Some theatres she's worked with include: Interrobang Theatre Project, Buffalo Theatre Ensemble, Williams Street Rep, AstonRep, Oil Lamp Theatre, WildClaw Theatre, and Red Tape Theatre.

[?] denotes ensemble member

Staff

Managing Artistic Director	Georgette Verdin
Artistic Producer	Elana Elyce
Marketing Director	Nancy Payne
Creative Director	Zoë Verdin
Production Artist & Box Office Manager	Christopher Aaron Knarr
Copywriter	Matthew Nerber
Casting Coordinator	Sarah Gise
Social Media Director	Jon-Paul Schaut

Ensemble Members

Georgette Verdin Salar Ardebili Brynne Barnard Laura Berner Taylor Elana Elyce
Shawn Galligan Sarah Gise Noël Huntzinger (artistic assoc.)
Christopher Aaron Knarr Joe Lino Matthew Nerber Claire Yearman Zoë Verdin

Board of Advisors

Joe Hartness President
Constance Etter Treasurer
Rebecca Lawson Secretary

Georgette Verdin
Elizabeth Verzo

Jessica Vann
Margo Morris



Interrobang Theatre Project is a proud member of the League of Chicago Theatres, Edgewater Chamber of Commerce and Edgewater/Andersonville Theatre District

2019 DONORS (\$50 or above)

Anonymous	Maria Garcia	Sharon Seeder
Karin Abercrombie & The Swedish American Museum	Tom & Suzy Jackson	Kate Sheehy
Gillian Anderson	Marybeth & Scott Johnson	Lizzy Shephard
Kirk Anderson	Ruth Johnston	Shulman-Rochambeau Charitable Foundation
Rosemary Anderson	Heidi Katz	Sarah Smith
Troy Baresel & Joe Hartness	Jean Marie Koon	Sandra Smycz
Kevin Bell	Kris Kostinen & Denise Wiler	Tim & Cathy Spadoni
L.C. Bernadine	Rebecca & Max Lawson	Estelle Spector
Cristie Bosch	Fran & Charles Licht	Maria Stephens
John Brix & Bette Rosenstein	Heather Martello	James Swanson
Lawrence Bundschu	Cathy & Adin McCann	Betsy Sylvester
Tom & Holly Carr	Nancy McDaniel	Charles Tan
Andrew Christopolous	Margo Morris & Stan Tamkin	Hall & Cindy Taylor
Carol & John Clavadetscher	Gwen Nodiff	Martin Till
Chuck Duff	Letitia Noel	Jessica Vann
Doug Emde & Joyce Simon	Jacob Olbert	Georgette & Zoë Verdin
Constance Etter	Jerry Proffit	Elizabeth Verzo
Sue Foster		Susan Weber

Interrobang Theatre Project is a non-profit organization that depends on donor support

Make a tax-deductible donation



Interrobang Theatre Project

5315 N. Clark St. #142 | Chicago, IL 60640

Box Office: (312) 219-4140 | interrobangtheatreproject.org

Special Thanks

Jackie Banks-Mahlum, Tara Mallen, Robert Groth & Rivendell Theatre Ensemble, Karin Abercrombie & The Swedish American Museum, North Shore Baptist Church, Ed Anderson, Jeremiah Barr, Larry Bundschu, Constance Etter, Joe Hartness & Troy Barese, Rebecca Lawson, Cathy McCann, Margo Morris, Jessica Vann and Elizabeth Verzo.

ITP's 10th Season is supported in part by generous grants and sponsorships from

The MacArthur Funds for Arts & Culture at the Richard H. Driehaus Foundation

The Gaylord and Dorothy Donnelley Foundation

The Swedish American Museum

CityArts Grant from the City of Chicago Department of Cultural Affairs & Special Events



GAYLORD & DOROTHY
DONNELLEY FOUNDATION

SWEDISH
AMERICAN
MUSEUM



DRIEHAUS
FOUNDATION

MacArthur
Foundation



City of Chicago
Mayor Rahm Emanuel

CHICAGO DEPARTMENT OF
DCASE
CULTURAL AFFAIRS & SPECIAL EVENTS

THE WORLD PREMIERE OF

LAURA AND THE SEA

by Kate Tarker

Directed by Devon de Mayo

OPENING
OCT 25

IT'S WOMEN'S WORK
WWW.RIVENDELLTHEATRE.ORG
OR CALL 773-334-7728

