



LIFELINE THEATRE

6912 North Glenwood Avenue, Chicago, IL 60626 • (773) 761-4477 • (773) 761-4582 (Fax)
www.lifelinetheatre.com

Welcome to this evening’s performance of **Middle Passage** based on the novel by Charles Johnson. We hope to see you for our next production, **Loki, The End of the World Tour**. Enjoy the show!

—Lifeline Ensemble

Aly Renee Amidei	Ilesa Duncan	Elise Kauzlaric	Dorothy Milne
Patrick Blashill	Andrés Enriquez	Robert Kauzlaric	Shole Milos
Jessica Wright Buha	Diane D. Fairchild	Anthony Kayer	Sandy Snyder Pietz
Christina Calvit	Kevin D. Gawley	Frances Limoncelli	Suzanne Plunkett
Heather Currie	Peter Greenberg	Amanda Link	Maren Robinson
Bilal Dardai	James E. Grote	Martel Manning	Phil Timberlake
Victoria DeIorio	Chris Hainsworth	Michael McKeogh	Jenifer Tyler
Amanda Delheimer	John Hildreth	Katie McLean	Christopher M. Walsh
Alan Donahue	Paul S. Holmquist	Hainsworth	

ENSEMBLE EMERITUS

Eric Lane Barnes, Meryl Friedman, Rebecca Hamlin, James Sie, Kathee Sills, Steve Totland, Elizabeth Wislar

BOARD OF DIRECTORS

Jay D. Lenn, <i>Chair</i>	Mark Greenberg, <i>Treasurer</i>
Loreli Fritz-Cohn, <i>Vice-Chair</i>	Lisbeth Maxwell, <i>Secretary</i>

Jessie Bylander	Sessy Nyman	Roche Schulfer
Katie McNally		Brian Swierczek

BOARD EMERITUS

Mark Gluskin, Cynthia Hunt Rudolph, Linda Jacobson, Patricia Kelley, Donna Mavros
 Susan Rosenberg (*In Memoriam*), Jackie Snyder (*In Memoriam*), Raymond R. Snyder,
 Dan Sullivan, Rebecca Tinkham, John Tolley, Steven Wise, Ann Ziegler

ADMINISTRATIVE STAFF

Artistic Director.....	Ilesa Duncan
Managing Director	Allison Cain
Marketing Director	Anthony Kayer
Operations Manager.....	Alex Ray
Education Director	Julie Ganey
Casting Director	Andrés Enriquez
Publicists	SHOUT Marketing and Media Relations
Box Office Manager	Kate Wall
Front of House Staff.....	Erika Clauson, Carly Davis, Heather Pauliks, Maggie Patchett, Susan Tecktiel
Casting Intern.....	Payton Smith

Ushers provided by The Saints



proudly presents

Middle Passage

Based on the novel by Charles Johnson

Adapted by Ilesa Duncan & David Barr III*

*Directed by Ilesa Duncan**

Scenic & Props Designer
Alan Donahue*

Lighting Designers
**Simean "Sim" Carpenter &
Scott Tobin**

Costume Designer
Anna Wooden

Dramaturg
Maren Robinson*

Puppet Designer
K.T. Shivak

Stage Manager
Becky Bishop

Lyrics
Ilesa Duncan*

Sounds Designer
Barry Bennett

Projections Designers
**Paul Deziel &
Alex J. Gendal**

Dialect Coach
Elise Kauzlaric*

Violence Design
R & D Choreography

Choreographer
Nicole Clark-Springer

Composer/Music Director
Shawn Wallace

Production Manager Jennifer McClendon
 Technical Director Harrison Ornelas
 Master Electrician/AV Supervisor.....Sam Moryoussef
 Assistant Director.....Christian Helem
 Assistant Stage Manager Kyle Bricker
 Assistant to the Designer and Scenic Artist..... Morgan Hood
 Assistant Costume Designer Caitlin McLeod
 Script Supervisor.....Jocelyn Prince
 Carpenters Nicolas Stockwell
 Assistant Master Electrician..... Steve Labeledz
 Electricians..... Zeenah Hussein, Melchizedek Levi, Nils Fritjofson
 Photography..... Suzanne Plunkett*

Special Thanks:

Charles Johnson, Segun Akano, Eric Backus, Christina Calvit, Diane Fairchild,
David Goodman-Edberg, Christian Helem

*Denotes member of Lifeline Artistic Ensemble

THE CAST

<i>Isadora/Ensemble</i>	Shelby Lynn Bias
<i>Captain Falcon/Ensemble</i>	Patrick Blashill*
<i>Jackson/Ensemble</i>	Hunter Bryant
<i>Zeringue/Ensemble</i>	Bryan Carter
<i>Baleka/Ensemble</i>	Demetra Dee
<i>Peter Cringle/Ensemble</i>	Andrés Enriquez*
<i>Santos/Ensemble</i>	LaQuin Groves
<i>Josiah Squibb/Ensemble</i>	Christopher Hainsworth*
<i>Rutherford Calhoun</i>	Michael Morrow
<i>Tommy/Ensemble</i>	Jill Oliver
<i>McGaffin/Ensemble</i>	David Stobbe
<i>Understudies</i>	Andrew Bosworth, Carter Caldwell, Chelsea Dàvid, Whitney Dottery, Grant Lewis, Shole Milos*, Elliot Sagay, Noah Thomas

SETTING

1830s New Orleans, The High Seas

ABOUT THE AUTHOR

Charles Johnson, a recipient of a 1998 MacArthur “Genius” Fellowship and National Book Award winner, is Professor Emeritus at the University of Washington in Seattle. The author of 21 books, Johnson is an award-winning novelist, essayist, literary scholar, short-story writer, cartoonist/illustrator, screenwriter and philosopher. He received the 1990 National Book Award for *Middle Passage*, NEA and Guggenheim fellowships, a Writers Guild Award for his PBS drama *Booker*, the Academy Award for Literature from the American Academy of Arts and Letters, and numerous other prizes and honorary degrees. In 2003, literary scholars founded the Charles Johnson Society at the American Literature Association. An Evanston, Illinois native, he now resides in Seattle.

NOTE FROM THE DIRECTOR

Set in 1830, Rutherford Calhoun is a newly freed youth who has migrated south to New Orleans seeking fortune – but instead, we find him living recklessly. In an attempt to escape debtors and avoid a forced marriage that would end his debt, Rutherford boards an outbound rigger. His clever escape backfires as he finds himself on a slave ship headed to Africa. Rutherford is trapped between warring factions: the captain who recruits him as a spy, the crew who enlist his help against the captain, and the Africans planning an escape – not to mention the mystery of the strange cargo brought onboard. This voyage of self-discovery will change our young hero forever.

As author Charles Johnson describes him, “Rutherford Calhoun is a rogue. He’s a free man who leaves Illinois for New Orleans. But yet, at his young age, he doesn’t know the meaning of freedom, that freedom involves responsibility.” If you ask Johnson what his book is about, he will tell you: “*Middle Passage* is first and foremost, at least for me, a rousing sea adventure story.”

I love an adventure story. But *Middle Passage* also resonates because it explores the American psyche on race, identity and freedom. It is important that we celebrate compassion, empathy and acceptance instead of ideas of fear, contempt and discrimination currently being sown.



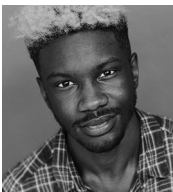
Shelby Lynn Bias (Isadora/Ensemble)
Shelby is thrilled to be returning to Lifeline after finishing her time studying at the Royal Conservatoire of Scotland in Glasgow.

Her past credits at Lifeline include: Eleanor in *Northanger Abbey*, as well as understudying *Miss Buncle's Book*. She has worked on several workshops around the city and has worked with Halcyon, Foundlings, and Unexpected Theatre Lab.



Patrick Blashill* (Captain Falcon/Ensemble)
Patrick has been an Ensemble Member with Lifeline since 1996 and has been performing at Lifeline since 1994's

Miss Bianca, where he played Bernard the mouse. Other favorite Lifeline roles include Towny in *Midnight Cowboy*, Old Bailey and the Earl in *Neverwhere*, and Bunter in *Strong Poison* (Non-Equity Jeff nomination: Ensemble). He is especially proud to have acted in all three of Lifeline's *Lord of the Rings* trilogy, spanning *The Fellowship of the Ring* (Bilbo Baggins), *The Two Towers* (Frodo Baggins), and *The Return of the King* (Frodo Baggins). Patrick has worked with numerous other Chicago theatres, including Eclipse Theatre (*Long Day's Journey Into Night*), Theatre Mir (*The Sea*), Backstage Theatre Company (*A Number*), Filament Theatre (*Eurydice*), Griffin Theatre (*Journey's End*), and Reverie Theatre (*Emma*). Patrick has also appeared as Mickey on *Chicago PD* for NBC Universal.



Hunter Bryant (Jackson/Ensemble)
Hunter is happy to be making his Lifeline Theatre debut. Recent Theatre credits include: *Chouquette* (Museum of Contemporary Art), *The*

Shipment (Red Tape Theatre), *The Aristophanesathon* (Hypocrites), *Dontrell, Who Kissed The Sea* (First Floor Theater).
FILM: *How Is This The World, First Dance*.
TELEVISION: *Empire* (FOX). MUSIC VIDEO:

We Go High – Chance The Rapper. He graduated with a BFA in Acting and a BA in Creative Writing from The Theatre School at DePaul University in 2017 and is represented by DDO Artists Agency. @Behunting



Bryan Carter (Zeringue/Ensemble)
Bryan is excited to be making his Chicago debut at Lifeline Theatre. Past credits include: *The Dreamer Examines His Pillow*,

Clybourne Park, *Sweeney Todd*, and as Nat Turner in *Nat Turner in Jerusalem* at the Kennedy Center Theatre Festival. He has a B.A. from the University of Wisconsin Oshkosh, and has trained with Jane Drake Brody, Adria Dawn, Phillip Edward Van Lear and Eric Gerard. Bryan is extremely thankful to be a part of this highly gifted ensemble and production team that has invested in his life and career.



Demetra Dee (Baleka/Ensemble)
Demetra is extremely excited to be making her Lifeline debut in *Middle Passage*. A few of her credits include: Luanne in *Be Here Now* (Shattered

Globe), Ernestine in *Crumbs from the Table of Joy* (U/S Performed) (Raven Theatre), Patrice in *Comfort Stew* (ETA Creative Arts), Neena in *The Green Book* (Chicago Dramatist), 2018/2019 Shattered Globe Program, and many others. She is represented by DDO Chicago.



Andrés Enriquez* (Peter Cringle/Ensemble)
Andrés returns to Lifeline's stage in his first role since he became a part of the Artistic Ensemble! Previous

Lifeline credits include: *Sylvester*, *Northanger Abbey*, and *Sparky!*. Chicago credits include: *A Gentleman's Guide to Love and Murder*, *Merrily We Roll Along* (Porchlight Music Theatre), *Killing Game* (A Red Orchid Theatre), *A Wonderful Life, My Way* (TATC),

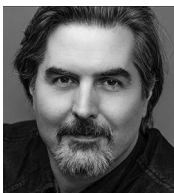
Adding Machine (Hypocrites), and *Love and Information* (Remy Bumppo). Regional credits include: *School House Rock Live!* (Birmingham Children's Theatre), *The Fantasticks*, *The 39 Steps* (Shawnee Theatre), *The Woman In Black* (Iowa Repertory), and *Scapin* (Colonial Williamsburg). Andrés also serves as Lifeline's Casting Director, and is represented by Gray Talent.



LaQuin Groves (Santos/Ensemble)

LaQuin is a Chicago based actor born in Los Angeles and raised there and Chicago. This is his 4th production with Lifeline Theatre

where he was last seen as Vandemar in *Neverwhere* [2018]. You may have seen him as Edmond in *Miss Holmes* or as John Savage in *Her Majesty's Will*. In the last year he has performed for TAI at The California Theater in San Bernardino for productions of *Tarzan* as Kerchick, *CATS* as *Old Deuteronomy*, and *Beast* in Disney's *Beauty and the Beast*. He has also played Father in *Children of Eden* at Performance Riverside and Bullfrog/Turkey in *Honk!* at Music Theater Wichita and San Gabriel CLO.



Christopher Hainsworth* (Josiah Squibb/Ensemble)

Christopher has been an ensemble member since 2010. Past Lifeline roles include Oliver in *Talking It Over*, Israel

Hands in *Treasure Island*, Marquis De Carabas in *Neverwhere* [2010], Edmond Dantes in *The Count of Monte Cristo*, Dhatt in *The City and The City*, Athos in *The Three Musketeers*, Buford/Taylor in *The Killer Angels*, Evermonde/Barsad in *A Tale of Two Cities*, Mycroft in *Miss Holmes*, Islington in *Neverwhere* [2018 Ext.], Alphonse/Creature in *Frankenstein*, and Bob/Mack in *The One and Only Ivan* (Tour 2019). He has also penned the adaptations of *Hunger*, *Monstrous Regiment* and *Midnight Cowboy* and the KidSeries show *Fable-ous!* He has also been seen onstage at The House Theatre of Chicago, Strawdog, Uma, WildClaw and Seanachai. He is represented by Big Mouth Talent.



Michael Morrow (Rutherford Calhoun)

Michael is ecstatic to be making his Lifeline Theatre debut. Michael's recent credits include: *Twelfth Night* (Midsommer Flight),

Macbeth (A Crew of Patches), and *Cyrano de Bergerac* (Michigan Shakespeare Company). He is a graduate of The Theatre School at DePaul University.



Jill Oliver (Tommy/ Ensemble)

Jill is delighted to be making her Lifeline Theatre debut! She was last seen in *Killing Game* at A Red Orchid Theatre. Jill spent 9 years as an

ensemble member of The Factory Theater where she produced, directed, wrote, and acted in over a dozen shows. In addition to the Factory, Jill has worked around Chicago with Artistic Home, Irish Theatre of Chicago, Shattered Globe and Wayward Productions. Jill is represented by Hayes Talent Agency.



David Stobbe (McGaffin/Ensemble)

David is happy be working with Lifeline and this cast of artists. A graduate of Columbia College Chicago, he was recently seen in

Nashville Children's Theater's world premiere of *Auntie Claus*, another recent credit includes the world premiere of *Bury Me* by Brynne Frauenhoffer. He worked across Chicago with companies such as Peninsula Players, Porchlight Theater, Dandelion Theater, Theo Ubique, A Red Orchid Theater, The Black Ensemble Theater, Steep Theater, Metropolis Performing Arts Center, and Jackalope Theater. A founder of the Bittersweet Arts Co. which had an award winning run with their production of *Forsythian Dweller's Club* in which he played "Celeb-Jay".



Andrew Bosworth (Understudy)

Andrew is joining Lifeline for the first time. A recent transplant to Chicago, he will be teaching Demidov Technique this

year with associates from the Rose Valley Theatre Group and Akvavit Theatre. He received his MFA from the FSU/Asolo Conservatory for Actor Training and has worked in Wisconsin, Iowa, Texas, North Carolina, and Florida. andrewbosworth.weebly.com.



Carter Caldwell (Understudy)

Carter (he/him/his) is thrilled to be a part of the *Middle Passage* team. Chicago credits include: *Red Bowl at the Jeffs* and *Neil and Shelly Try*

Something (The Sound,) *The Black Keys Live In Concert* (The Boxcar at Steep Theatre,) and *May the Road Rise Up* (The Factory Theater.) Next up is *All-One! The Dr. Bronner's Play* (The Passage Theatre.) Other acting credits include: *The Many Deaths of Nathan Stubblefield*, *Dracula*, and *Home Invasion* (Actors Theatre of Louisville.) Carter is also a freelance producer and works with the film collective Means Of Productions. www.cartercaldwell.com



Chelsea Dàvid (Understudy)

Chelsea is thrilled to be working with Lifeline for the first time! Other Chicago credits include: *Macbeth* (The Arc Theatre), *The Rogue Aviator*

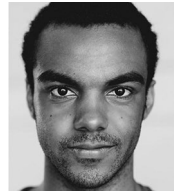
(Otherworld Theatre), *Everybody* (Brown Paper Box Co.), *The Fly Honey Show* [9 & 10] (The Inconvenience); Michael Glover Smith's indie films *COOL APOCALYPSE* (2015) and *Rendezvous in Chicago* (2018) to name a few! She's proud to be represented by BMG Talent Chicago. You can catch her on stage at Drunk Shakespeare Chicago several times a week performing improv and sketch comedy.



Whitney Dottery (Understudy)

Whitney feels honored to be returning to Lifeline and working on her second show this season. She was last seen as Bunny in *Bunny's Book Club*,

and you may have caught her last season as Petey in *Bunnicola*. Other recent credits include: *Love and Information* (Trap Door Theatre), *Wolf Play* (The Gift), *Aesop's Fables* (Raven Theatre), among others. Whitney is an alum of Columbia College Chicago and is represented by NV Talent. Catch her next at Buffalo Theatre Ensemble as T.C. in *Naperville* by Mat Smart. www.whitneydottery.com



Grant Lewis (Understudy)

This is Grant's first time working with Lifeline Theatre. He has previously worked with The Jacobins, where he played Cortez in their

world premiere of *The Book of Sebastian*, and with Windy City Playhouse as an understudy for *The Recommendation*. He also made a brief appearance on this current season of *Chicago Med*. Grant graduated from Northwestern University in 2018 with a degree in Theatre and Linguistics.



Shole Milos (Understudies)

Shole is a Lifeline Ensemble member who has been working with Lifeline since 1993 since performing in *101 Dalmatians* and

My Father's Dragon. He has appeared in productions of *Mariette in Ecstasy*, *Johnny Tremain*, *The Piano Tuner*, and the original productions of *Whose Body?* and *The Emperors Groovy New Clothes*. He directed the MainStage production of *A Long Way From Chicago* as well as numerous KidSeries productions including all the stories in the *Click Clack Moo* catalog, *How To Survive a Fairytale*, and many others.



**Elliot Sagay
(Understudy)**

Elliot is thrilled to join the *Middle Passage* team. Recent credits include: *Call Me Madam* (Porchlight Music Theater) and *Big River*

(Round Barn Theater). Apart from acting, Elliot writes plays and is an avid soccer fan. He received his B.A. from Northwestern University.



**Noah Thomas
(Understudy)**

Noah is grateful to join the *Middle Passage* cast and is even more thrilled to be a part of Lifeline Theatre. He graduated from the University of

Wisconsin Platteville with a double major in Psychology and Theatre, but also took roles in shows like: Estragon in *Waiting for Godot*, The Ghost of Christmas Future in *A Christmas Carol Ballet*, Aldolpho in *The Drowsy Chaperone*, and J.B Biggley in *How to Succeed in Business Without Really Trying*.

David Barr III (Co-adaptor) David is the author of several published works for the stage including *Death Of The Black Jesus*, *Evry Time I Feel The Spirit*, *The Face Of Emmett Till* (Dramatic Publishing), and *Black Caesar* (PerformInk). His stage works around Chicagoland have been produced at Goodman Theatre, Pegasus Theatre, Chicago Theatre Company, Black Ensemble Theatre. Nationally, his plays have been produced in Los Angeles, St. Louis, Buffalo, Louisville, and New Orleans. He is a three time recipient of the Illinois Arts Council Fellowship for Playwriting, a two time winner of the National Play Award sponsored by Unicorn Theatre in Kansas City (1995 and 2000), recipient of the 2000 Festival Of Emerging American Theatre (FEAT) National Playwriting Award, winner of the 1998 Theodore Ward Playwriting Award, the 2000 recipient of the Donahue-Tremaine Trust Award for excellence in playwriting, and co-winner of the first annual David Ofner Prize (2000), among others.

Ilesa Duncan* (Director/Co-adaptor)

Ilesa became Lifeline's Artistic Director and joined the ensemble in January 2019, where she directed *Neverwhere* (Jeff Recommended 2018), and *Blue Shadow* (KidSeries). A producer, director, writer, educator and theater-maker, Ilesa is an avid collaborator on new work. Other directing credits include *Eclipsed* (Jeff Nominated), *Shakin' The Mess Outta Misery* (Jeff Nominated), *Rutherford's Travels* (Jeff Nominated, co-adaptor), *The Green Book*, at Pegasus Theatre; *Broken Fences* at 16th Street Theater; and *The Nativity* (Congo Square; Jeff nominated). Ilesa has also worked with The Goodman, Writers Theatre, Victory Gardens, Rivendell Theatre Ensemble, Stage Left, and Chicago Dramatists, as well as Contemporary American Theatre Company (Ohio), The Alliance Theatre (Atlanta), Arena Stage (Washington DC), and Lincoln Center Theater (New York). As an educator, Ilesa has led youth development and arts education programs in Chicago for over fifteen years. She is a past awardee of an NEA/TCG Directing fellowship and a 3Arts Ragdale Fellowship. She is member of the Lincoln Center Theatre Director's Lab and the Chicago Director's Lab.

Becky Bishop (Stage Manager) Becky is frequently found at Lifeline Theatre, where she previously stage managed *Frankenstein*, *Neverwhere* [2018], *Miss Holmes*, *Miss Buncle's Book*, *Jane Eyre*, *Monstrous Regiment*, and *The City & The City*. She most recently managed the Plagiarist's *Choose-Your-Own Adventure play Season Pass: Deaux Over*. Other productions in Chicago include: *Some Like it Red* (The Plagiarists); *Prowess* (Jackalope); *The Dead Prince*, *The Half Brothers Mendelssohn*, *Funeral Wedding: The Alvin Play* (Strange Tree); *Robber Bridegroom*, *Letters Home*, and *Stage Door* (Griffin Theatre). Additional productions have been with Steep, Caffeine Theatre, and The Gift. She has been a non-equity stage manager in Chicago since 2006.

Barry Bennett (Sound Designer) Barry is pleased as punch to return to Lifeline after composing music and sound designing last season's, *Frankenstein*. He is a Jeff nominated maker of theatrical music and sound with over 40 world premieres, a multitude of albums under his own name,

and as a band leader with the seminal trance outfit MiLkBaB y and the art rock group he currently leads, GRAPE JUICE PLUS. Other companies he has worked include: The Goodman, Victory Gardens, Chicago Dramatists (former associate artist), Writers' Theatre, The Aardvark, Steppenwolf, The Art Institute, Emerald City, National Pastime, Cindy Brandle Dance Company, PROP THTR, Chicago Moving Company (former composer in residence), and others. He is an artistic associate and resident composer for 16th Street Theater, Winifred Haun & Dancers, and the director of Impending Behavior Orchestra. barybennettsounds.com

Kyle Bricker (Asst. Stage Manager) Kyle is excited to be back at Lifeline. Previous Lifeline credits include: *Sylvester* and *The Man Who Was Thursday*. Other Chicago credits include: *Girl Found* (Idle Muse) and *Nightmares and Nightcaps* (Black Button Eyes). Kyle is a proud alumnus of the University of Illinois at Urbana-Champaign.

Siméon "Sim" Carpenter (Co-Lighting Designer) Sim is a young African American lighting & stage designer originally from Baltimore. He has been based in Chicago designing theatre, dance and concerts for nearly 5 years. He has had a passion for creative design since the age of 13. Design credits include: *Eurydice*, *Dutch Masters*, *Hannah & Martin*, *Hoodoo Love*, *A Darker Mine*: *Installation*, *Xavier Omar World Tour*. simcarpenter.com

Paul Deziel (Co-Projections Designer) Paul practices projection design out of Chicago and Washington D.C. Selected credits include: *P.Y.G. or the Mis-education of Dorian Belle* (Jackalope Theatre), *Crystal Creek Motel* (Flying V Theatre), *X and Tilikum* (Sideshow Theatre Company), *The Color Purple* (Drury Lane Theatre), *Photograph 51* (Court Theatre), *The Vagrant Trilogy* (Mosaic Theatre Company), *United Flight 232* (The House Theatre of Chicago), and *Twisted Melodies* (Congo Square Theatre). Paul holds an MFA in Projection & Multimedia Design from the University of Maryland, is an artistic affiliate with American Blues Theater, and the recipient of a Joseph Jefferson Award for Projection Design. pauldeziel.com

Alan Donahue* (Scenic/Properties Designer) Alan adds to his nautical resume having previously designed the Lifeline productions of *Treasure Island* (2009) and *Around the World in 80 Days* (2002). Other seaboard designs include *Rupert's Swashbuckling Adventure* (2019) at Silver Dollar City in Branson, Mo; *Anything Goes* (1992) at the Drury Lane South; and *Transit!* (1983), a Panama Canal oil tanker musical—I kid you not!—at Texas A&M University. He designed *Whose Body?*, which was definitely landlocked, earlier this season.

Alex J. Gendal (Co-Projections Designer) Alex is thrilled to be part of Lifeline Theatre. He is a Chicago based Projection Designer and Creative Technologist. He specializes in Interactive Media, and some of his recent work includes *It's Your Funeral* (Laboratory Theatre), *Eugene Onegin* (McCullough Theatre), *SHOULDERS* (B. Iden Payne Theatre), *Anonymously* (Oscar G. Brockett Theatre), *The Laramie Project* (Fisher Theatre), and *Belly Dance Masters* (Double Tree Hilton, Orlando, FL). He recently completed Graduate School at the University of Texas at Austin, earning his Masters of Fine Arts in Integrated Media for Live Performance. alexjgendal.com

Christian Helem (Asst. Director) Christian is a teaching artist, director, actor and playwright. He currently teaches for Chi-Arts H.S. in the Musical Theatre concentration and the August Wilson Monologue Competition. He has a passion for directing musicals and other imaginative stories. His directing credits are *21 Chump Street: the Musical* (Counter Collective), *The Glass Menagerie* (UIC Theatre) and the original docu-drama *Anne Zimmerman Project*. His acting work includes: *floissant and canfield*, *Passing Strange*, and *The Last Days of Judas Iscariot*. He works at the League of Chicago Theatres as an Administration Assistant.

Elise Kauzlaric* (Dialect Coach) Elise has been a member of Lifeline's artistic ensemble since 2005 and has coached numerous productions (*The Killer Angels*, *The Moonstone*, *The Picture of Dorian Gray*, *The Mark of Zorro*, *The Piano Tuner*, et al). She has also coached for Steppenwolf, Marriott Theatre, TimeLine, Irish Theatre

of Chicago, Griffin Theatre, the Hypocrites and others. Twice nominated for Non-Equity Jeff Awards for her dialect work (*Busman's Honeymoon* at Lifeline and *Punk Rock* at Griffin), she also directs and acts around town and has received NE Jeff nominations for her direction of *Northanger Abbey* and *Mariette in Ecstasy* (Lifeline) as well as a Supporting Actress nomination for her work in *On the Shore of the Wide World* (Griffin). Elise also teaches at CCPA at Roosevelt University.

Caitlin McLeod (Asst. Costume Designer)

Caitlin is thrilled to collaborate with Lifeline again. She is a costume and scenic designer, puppet enthusiast, and traveler. Other Lifeline shows include: *Bunny's Book Club*; *Whose Body?*; and *The Man Who Was Thursday*. Most recent other credits include: *Mlima's Tale* (Griffin Theatre); *Stick Fly* (Writers Theatre); *The Very Hungry Caterpillar Show* (Chicago Children's Theatre); *The Walls of Harrow House*; *The Stranger and The Shadow* (Rough House); *The River* (Boho Theatre); *The Ballad of Romeo and Juliet* (American Myth Center, NC); *American Jornalero* (Teatro Vista); *Seussical* (Drury Lane); and *The Great God Pan* (Chicago Fringe Opera). She also is a co-founder of the Chicago based costume crafts business Craftiga. She earned her MFA at Northwestern University. CaitlinMcLeodDesign.com

Sam Moryoussef (Master Electrician/AV Supervisor)

Sam is pleased to have the opportunity to be back at Lifeline Theatre as the Master Electrician/AV Supervisor. He recently moved back to Chicago from North Carolina where he was working as the Assistant Technical Director at Elon University. Sam has had, and continues to have the pleasure of working in production management, lighting, and carpentry, with several theatres throughout the city, including Lookingglass Theatre Company, The Ruffians, and Rivendell Theatre Ensemble. He graduated from the University of North Carolina Greensboro with a BFA in Drama concentrating in Technical Production. Sam is thrilled to be back in Chicago and working with such a welcoming group of artists and craftsmen.

Harrison Ornelas (Technical Director)

Harrison Ornelas was born and raised on the north side of Chicago. After graduating from Columbia College in 2015 Harrison has been Technical Directing for theaters all over the city including Akvavit, Redtwist Theatre, Strawdog Theatre Co., Silkroad Rising, A Red Orchid, UrbanTheater, Red Tape Theater, Theater Wit and Shattered Globe just to name a few. He has also been an on staff TD for the past three seasons at Theater on the Lake. Harrison is thrilled to now be working with Lifeline and is excited for his inaugural show with the company, *Whose Body?*. Harrison is always looking for his next collaboration and creative challenge wherever his skills are needed.

Jocelyn Prince (Script Supervisor)

Jocelyn is thrilled to be working with Lifeline for the first time. Other dramaturgy credits include Court Theatre, Steppenwolf Theatre Company, Writers' Theatre, Juilliard School of Drama, Lookingglass Theatre, and eta Creative Arts Foundation. Jocelyn has worked on the artistic staff of The Public Theater and Yale Repertory Theatre and was a co-founding artistic director for The New Black Fest. She teaches theater and performance studies at Northwestern University. Jocelyn is an alumna of Bradley University (BA) and Northwestern University (MA). Visit jocelynprince.com.

R&D Choreography [Victor Bayona and Richard Gilbert] (Violence Design)

R&D Choreography is Victor Bayona (he/him) and Rick Gilbert (he/him). We are as proud as punch to be back at Lifeline for our 16th show here! R&D was founded in 1997 for the purpose of improving the power and effectiveness of Chicago area theatre through the art of violence design - choreographing better fights for better shows! We have designed violence and/or intimacy for over three hundred productions and films. Our work has been seen at dozens of Chicago area theatres, including 16th Street, ATC, Chimera, Factory, Goodman, Haven, Lookingglass, Metropolis, Oak Park Festival, Pride Films and Plays, The Paramount, Piven, Steep, Strawdog, and Theo Ubique.

Maren Robinson* (Dramaturg) R&D
Maren is pleased to be working with Ilesa Duncan again after having been dramaturg for both productions of *Neverwhere*. As an ensemble member, she has also served as dramaturg at for *Emma*, *Northanger Abbey*, *Pride and Prejudice*, *The Moonstone*, *Hunger*, *The Woman in White*, and *Miss Holmes*. She also has worked in Chicago with Court, Strawdog, Eclipse, Caffeine, Greasy Joan and Camenae theaters. Maren is also a company member and resident dramaturg at Timeline Theatre where she has been dramaturg for over thirty plays. She holds a MA in Humanities from the University of Chicago. She is an instructor at The Theatre School at DePaul and Associate Director of the Master of Arts Program in Humanities at the University of Chicago. Maren is the Chicago VP of the Literary Managers and Dramaturgs of the Americas.

K.T. Shivak (Puppet Designer) KT Shivak is a sculptor, puppeteer, and original member of Chicago Puppet Studio, the design and fabrication wing of the Chicago Intl. Puppet Theater Festival.

Nicole Clark-Springer (Choreographer)
Nicole is currently the newly appointed Artistic Director for Deeply Rooted Dance Theater. She began formal training under the guidance of Claudette Soltis (Ballet Russe de Monte Carlo and Joliet Ballet Society) and the Indianapolis Ballet Theatre. She has set ballets on Deeply Rooted Dance Theater, Collage Dance Collective (Memphis, Tennessee), and Flatfoot Dance Company (South Africa), as well as toured Turkey, South Africa, and Bulgaria; worked with Congo Square, Black Ensemble Theater, and Pegasus Theater; and choreographed the opening number for the nationally syndicated Steve Harvey Show-Halloween Celebration. She teaches and choreographs throughout the country and has been on faculty as an Adjunct Professor with Chicago State University, Western Kentucky University, and, currently, Northwestern University.

Scott Tobin (Co-Lighting Designer) A
fourth year lighting design student at The Theatre School at DePaul, Scott's previous credits include: the Michigan Shakespeare

Festival (Master Electrician), NFL Hall of Fame Enshrinement Weekend (Intern), and various designs for The Theatre School, including: *One Flea Spare*, *The Witness*, *Honey Girls*, *Our Lady Of Kibeho*, and *Brooklyn Bridge*. Scott was also the recipient of the 2019 Michael Merritt Academic Award for Collaborative Design. For more information, visit ScottTobinDesign.com.

Shawn Wallace (Composer/Music Director) Shawn is excited to make his Lifeline Theatre debut with *Middle Passage!* Arrangement and composition for theatre include: *Ifa Bayeza's Amistad Voices* (Chicago Shakespeare Theatre), *Kid Zero* (Chicago Center for Performing Arts), and *Charleston Olio* (National Black Theatre Festival), *Shepsu Aakhu's Warm on the Cooling Board* (MPAACT 2014) and *Carla Stillwell's Lawd the CVS is Burning...a Gospel Musical Stage Play* (MPAACT 2015), *When Good Broccoli Goes Bad* (MPAACT), *Rutherford's Travels* (Pegasus Theatre Fall 2016) and *Shakin' the Mess Outta Misery* (Pegasus Theatre Fall 2017). A native of Chicago's Beverly/Morgan Park neighborhood and proud alum of Morgan Park High School, Shawn studied Music Theory and Composition at the University of Illinois at Urbana-Champaign and is currently serving as Music Director for The Emmaus Center and as a Music Director and Composer for Storycatchers Theatre.

Anna Wooden (Costume Designer) Anna is excited to return to Lifeline. Recent theatre credits include: *The Man Who Was Thursday* (Jeff Nom) and *Whose Body?* (Lifeline), *Footloose* (Marriott), *Pinocchio* (The House), *Second Skin* (Wildclaw), *Strange Heart Beating* and *Another Jungle* (Cloudgate Theatre), and *The Walls of Harrow House* (Rough House). Film credits include: *First Dance* (Project Blue Light), *The Shepherd* (Vertical Church), and costume coordinator on the pilot of Showtime's *The Chi*. She is co-founder of the crafts company Craftiga Ltd and an artistic associate of Cloudgate Theatre Company. She is adjunct faculty at DePaul University, and received her MFA from Northwestern University. annawoodendesign.com

DONORS

The following foundations, corporations, and individuals have made significant contributions to Lifeline Theatre. Their generosity and enthusiasm have made our efforts a success. These donations provide support for our programs, our accessibility initiatives, and general operating expenses. This list includes gifts/pledges received between October 15, 2018 and January 25, 2020.

FOUNDATION SUPPORT

Elizabeth F. Cheney Foundation
Bayless Family Foundation
Gaylord & Dorothy Donnelley Foundation
Michael & Mona Heath Fund at The
Chicago Community Foundation
The James Bruce Smith fund for Liberty
and Theatre

Lloyd A. Fry Foundation
MacArthur Fund for Arts and Culture at
Prince
Polk Bros. Foundation
S & C Foundation
The Saints Matching Grant
The Shubert Foundation Inc.

GOVERNMENT SUPPORT

Chicago CityArts, a grant from the Chicago
Department of Cultural Affairs and
Special Events

This program is partially supported by
a grant from the Illinois Arts Council
Agency.

CORPORATE SUPPORT

Anonymous
A.R.T. League, Inc.
AmazonSmile Foundation
Cornerstone Investment Group, Inc.
The Common Cup
CNA Foundation
ExxonMobil Match
FGMK—Chicago Accounting and
Consulting Firm, LLC

FlexPrint Inc.
HBRA Architects
JB Alberto's
Rogers Park Social
Schuler Shook Theatre Planners
Shawchicago Theater Company
The Steele Foundation
TH Manufacturing, Inc.

INDIVIDUAL SUPPORT

\$2,500 & Up

Anonymous (2)
Dorian Bezanis
Christina Calvit &
Eric C. Haugen
Rosemary Calvit
Alexandra & Bill Cole
The Lehoczky
Escobar Family
Loreli Fritz-Cohn &
Steven Cohn
Barbara J. Geist
Mark & Melanie Greenberg
Katie & Chris Hainsworth
Cindy & Jay Johnson
Jay D. Lenn & Greg Diercks
Donna Mavros
Lisbeth Maxwell

Katherine McNally
Lorraine & Bill McNally
Sessy Nyman
Joseph & Wendy Park
Roche Schulfer &
Mary Beth Fisher
James Sie & Doug Wood
James Smith
Brian & Shannon
Swierczek
Becky Tinkham &
Chris Prouty

\$1,000 - \$2,499

Amy & Micah Adams
In Memory of Neil Lifton
Doug Bragan
Tyrone Clark & Ann Kelly

Vicki Curtis & William
Siavelis
Alan Donahue
Nona C. Flores
Foley Family Foundation
Arthur & Marlene
Greenberg
Craig & Debbi Griffith
Krys Hansen
Susan & Dan Johnson
Belinda Mathie &
Brian Haag
Dorothy Milne
Barb & Joe Moore
Jonakan O`Steen
Thomas Olivieri
Steve & Ruth Ott
Barb Richardson

DONORS CONT.

Megan & Ryan Roberts
Mr. & Mrs. Gerald
Skidmore
Stephen Spencer & Lynn
Gullickson Spencer
Phil & Amy Timberlake
Marilyn Tyler
Karen Van Meter
Laura J. Wilhelm

\$500 - \$999

Tom Adair
Katherine M. Adams
Anna Anrod
Sal Becovic
Judith & Sam Bernstein
Denise Calvert
Parvesh Cheena
Ms. Susan Chemler
Beth & Tom Coronelli
Heather Currie &
Dwayne Cornelius
Raymond & Judith
Dempsey
Linda Fairbanks &
Jeanne Devore
Jenene Francis
Michael Glasser &
Sharon Rosenberg
Alan Goldberg &
Cookie Gluck
Ed & Carole Grote
James E. Grote
Mike & Kathleen Hayes
Paula & Ron Hoerner
Rose Marie Houston
Nancy & Nate Jarvinen
Taylor Johnson
Michael & Rhoda Kamin
Patricia Kelley
Kathy Kirn & David
Levinson
Susan Lannin &
Albert Ettinger
Karen J. Lewis
Dana Mavros
Mr. & Mrs. Bob Maxwell
Frank & Gigi McCollum
Therese McGuire
Eleanor Nangle
Tracey Nicaastro
Suzanne Plunkett
Evan & Laura Richards
Lakeside Bank
Bobbie & Warren Ruby
Karla Scherer
Michael Schuppe

Pat Shaw
Jeanie Sherwood
Evelyn Siegel
Neil Sondgeroth
Elissa Speizman
Wilma Stevens
Wes Studzinski
Maria Whelan
Vicki & Howard Wright
Will Yang
Ziegler-Orloff Family Fund

\$250 - \$499

Barbara & Ron Altman
Catherine Anderson
Theodora Anderson
Bob Auchinleck
David Ball & Dennis Ferry
Joanne Balogh
Elissa Bassler
Bernice Bigelow
Marian Brown
Thomas & Mary Brown
Betsy Burtelow &
Jim Boyer
Allison Cain & Manuel
Tamayo
Peter Calibraro
Conrey Callahan
Bruce Caris and Robin
Bourne-Caris
Bill Cassin
Kendra Churchill
Bill Currie
Lino Darchun
Elizabeth Demes &
Barry Mullen
Alvin Dempsey
Antonio Diaz
Daniel Drake
Ilesa Duncan
Kate Early
Nancy R. Engel
Willo Falstein
Tommy & Debbie Foster
Lucinda Fox & John
Julie Ganey
Mark & Diane Gluskin
Samuel Goldman
Pamela Gray
Julia Gray
Richard & Dorothy Gregory
Melanie Rose Hannon
Becky Hanscom
Mark Haugen
John Hawes & Mary
McArthur

Rogers Park Builders
Group
Lois Hobart
John R. Hummel & Cynthia
S. Mark-Hummel
Betsy Jeffries
Maureen Kelly
Nick Kosiek &
Samantha Jensen
Ryan Krapf
Nicolette La Croix
Barbara Lanctot
Julie Layton & Jim Weber
Amanda Link
Dan & Jennifer Linzer
David Martin
Marty Max
Almeda & Theodore
Maynard
Jim McDaniel & Kevin
Hochberg
Richard & Lauren Miller
Evemarie Moore
Paul & Rebecca Mulroy
Catherine Nagler
Sue Ontiveros
Jim & Anne Purky
James Rabinowitz
Bruce & Karren Ray
Julia Sagalovsky
Joe Schermoly
Dow Scott & Claire
Braverman
Sharon Seeder
Laszlo Simovic
Alana Snowden
Janet Storie & Ray
Schooley
Barbara & Randy Thomas
Virginia Tolford
Richard Rison & John Tolley
Lynda Van Duerm
Cynthia Vivian
Kara Wagner Sherer
Richard & Karen Weiland
Judi Wood
Nicholas Wycklent
Judi Zeal

\$100 - 249

Judith Akers
Ryan Akey & Shaun Kane
Joyce Albi
Jill Althage
Gregory Altman
Cheryl & John Aponte
Karen Baranowski

DONORS CONT.

Rom Barkhardar
 Romy Barrett Golden
 Kimbra Bartz
 Linda & Michael Berry
 Elizabeth Beyreis
 Laura Bleiler
 Richard Bough & David
 Easterbrook
 Mary Boylan & Dennis
 Spearman
 Craig Brandt
 Claire Brettell
 Beth Ann Bryant-Richards
 Christina Burns
 Steve Cain
 Gregory Caldwell
 John Calvit
 Stephen Camozzi
 Claire Camozzi
 Colette Camozzi
 Christopher Carney
 Danielle Cassel
 Caroline Cassidy
 Norine Chiu
 Dan Clancy
 Richard Clark &
 Mary Munday
 Michael P. Cohen &
 Lisa Ann Goldberg
 Myrel Cooke
 Marilyn Coopersmith
 Robert Curley
 Gregory Dahlgren
 Susan Davoust &
 Clark Davoust
 Ernie & Tracy Deak
 Amy Deangelo
 Dana Desjardins
 Lee Dickson
 Leonora Dickson
 Paul Dillon
 Chris Djuric &
 Charlie Yarnoff
 Mimi Duginger
 Glenda Duncan
 Alice Eakes
 Kristina Edmunds
 Inna Elterman
 Carol Emfinger
 Linda & Dean Englund
 3play Media Via Ben
 Diane Fairchild & David
 Monique Flasch
 Brenna Flaughter & H.
 Craig Foxgrover
 Soper's & Ginders
 Martin Glickman

Dave Goldberg
 Robert and Roberta
 Sam Goodman
 Jeana Gowin
 Marc Grabowski
 Diane Gregart
 Manny Guevara
 Martin and Karen Halacy
 Arthur Hansen
 Joe Hartness & Troy
 Dorothy Harza
 Jill Heidrich
 Steven Heyman
 Bruce & Beth Holmquist
 Donald Honchell & Susan
 Doug Imber
 Linda Jacobson
 Jeffrey Jens
 Peter Joelson
 Jerry Johnson
 Morgan Johnson
 Angela & Christopher
 Matthew Jones
 Amir Kalamperovic
 Sandra Kaspar
 Barbra Kaufman
 John Casey
 Gina Kennedy
 Diana King
 Jan Klawans
 Monika Kopec
 Julie Kornak
 Judith Kowal & Bob
 Mark Kozy
 Larry Kurtzon
 Alex Kyger
 Lauren Leitao
 Carol & Lionel Lenz
 Ken Leone & Suzanne
 Kristina Rice and Jacob
 Barbara and Jack Levie
 Phil Levsky
 Betsy Lewin
 Patricia & Richard Lewis
 Jennifer Loboda
 Melvin Lopata
 Connie Luecke
 Anonymous
 Kate Mahoney
 Ray Massucci
 Jim & Gay Mather
 Dan McCarthy
 Ellen McKnight & Jeffrey
 Joanne Mcnally
 Sally McPherrin
 Carla Miller
 Janice Miller-Goldsmith &

Ellen Mitchell
 Anonymous
 Melinda Moore
 Holly J Mulvey
 Judy Muntz
 Maria Myrianthopoulos
 Tom Nading
 Roberta Nash
 Mona Navitsky
 Mila Novak
 Mary O`Connor & Brad
 Megan Ormiston
 Dianne Ourouke
 Renee Oshinski
 Mrs. Edward Pappert
 Carol Patterson
 Charles Perkins
 David and Carole Perlman
 Michael & Jennifer Pichla
 Lisa Pildes and Michael
 Ms. Joanna Pinsky
 Lea Pinsky
 Joshua F. Pollack
 Allan & Carla Price
 Robert Quinn
 Ann Rabin
 Thomas Raleigh
 Adele Rapport
 Tom & Donna Ray
 Melaney & Dwayne Reed
 Ben & Charlotte Reed
 Virginia Rose Reed
 Forrest & Fran Rice
 Kristina Rice &
 Jacob Lesgold
 David & Donna Richert
 John & Leslie Roberts
 Sue Ann Robinson
 Gale Ross
 Lori Rowe
 Chris & Sheila Rudolphi
 Julia Rugletic &
 Kyle Rugletic
 Bill Salvato & John Gordon
 Neil Samuels & Jill Lexier
 Joyce Saricks
 William J. Savage
 Michael Schneider
 Frank & Karen Schneider
 Elizabeth Schraft
 Stephen Scott
 Mike & Linda Scussel
 Brian Semel
 Mr. & Mrs. John Seymour
 Lori Sheehan
 Sarane & Bruce Siewerth
 Christine Slivon

DONORS CONT.

Carl E. Smith
 Allen Sondgeroth
 Bridgette Stack
 Daniel Starzyk
 Skip & Rhonda Stern
 Casmir & Dorothy
 Szczepaniak
 Lisa Tekmetarovic
 Martin Till
 David Tobison
 Patrick Tortora
 Robert Tortora
 Andrea Van Gelder
 Mary Van Slyck
 Elizabeth Vandercook
 Prabhu Velan
 Jean Venegas
 Dona Vitale
 Victor & Jane Walchirk
 Jeremy Wechsler &
 Anne Penniston
 Karen Werner
 Gregg Werner
 Esther Ruth White
 Jennifer Widmer
 Gary Wigoda
 Deborah Williams
 Betsey Wills & Scott Wills
 Lisa Yondorf

\$25 – 99

Anonymous (3)
 Patricia Acerra
 Steven Adams &
 Mary Jo Schmitz
 Jessica Agin
 Angela Agne
 Kristine Anstrats
 Brandon & Jill Antoniewicz
 Shauna Babcock
 Julie Badel
 Scott Badskey
 Barbara Baldwin &
 Jeff Horvath
 Jeralyn Baran
 Leah Barrish
 Frances Benbow
 Susan Benner
 Matthew Benoit &
 Cathleen Dohrn
 Diane Beran
 Eric Blais
 Ralph Block
 Gideon Blustein
 Darlene Brill
 Pat Byrne
 Vicki Capalbo

Graziano Carlon
 Adam Chambers
 Annag Chandler
 Karyn Chmel
 Mike Christ
 Susan Clark
 John Coats
 Mila Cohen & Eli Lifshen
 Lynn Cooper
 Gwendolyn Cornelius
 Patricia Costello
 Mr. & Mrs. Charles Cross
 Megan & James Cusick
 Chris Deering
 Sharon Digiacomio
 Robert Doepp
 Andrew Dolliff
 Erin Doppke
 Melanie Doweiko
 Bonita Driscoll
 Carol Edelson
 Teresa Edward
 Barbara Etchingham
 Leah Finelli
 Bernadette Foley
 Steve & Kelsey Gerszewski
 Richard Ginsburg
 Janice Gintzler
 Bonnie Goldenberg
 The Goldfarbs
 Clark Golembo
 Gabrielle Gottlieb
 Debra Jean Griffith
 Catrine & Tom Guzik
 Elaine Halama
 Rebecca Hamlin
 Marsha Harman
 Gayle & Kurt Hedlund
 Angeline Heisler
 Alice Herman &
 Hal Temkin
 Maria Hoffman
 Kristin Hoffmann
 Susan Hoseman
 Jean Howlett
 Douglas Hutton
 Kristin Jacobsen
 Fran Johns
 Nancy Johnston
 Barry & Mimi Katz
 Lindsay Kaufman
 Yvonne Kelly
 James King
 Hallie Kirkley
 Mary Jane Klein
 Darlene Kober
 Janis & Robert Kohm

Morgan Kolarich
 Judy & Perry Kozicki
 Steven & Faye Krasner
 Willis Lambertson
 Kathy Langley
 Linda Leibsker
 James & Sharon Lenn
 Cheryl Lindquist
 Sandra Link
 Sarah Lisy
 David & Eleanor Lukens
 Alexandra Margo Malos
 Mr. & Mrs. James B. Mann
 Cynthia Marler
 Jennifer Marling
 Samella McClary-Brown
 Leone McDermott
 Peter & Kate McGovern
 Denise McIntosh
 Marissa McKown
 Katherine McSpadden
 Sharon Michalove
 Mark Miller
 Cary & Tom Mondschean
 Peter Morris
 Jane Mueller
 James & Brooke Murphy
 Christine & Patrick Murray
 William Myers
 Mary Ann Naghski
 Jacqui Nguyen
 Sue Noller
 Kevin O'Neil
 Noel Ohearn
 Sara & Mack Overton
 Ryan Patella
 Mark & Sandy Pietz
 Peter Pretzer & Marion
 Sandi & Jim Price
 Marianne Quinn
 Nancy Quinn
 Michael Rakers
 Katie Rathslag
 Robert Ray &
 Barbara Stoldt
 Jim Redlich
 Margarita Redmond
 Ann Reisel
 Keith Reynolds
 Fred Rivera
 Lourdes Roberts
 Stephanie Rogers
 Meredith Rogowski
 Viki Rollins
 Richard Roman
 Maryl Rosen & Lisa Simone
 Ruth Ross

DONORS CONT.

Sharon Roth
Danielle & Pete Rutkowski
Anne Schaefer
Heddi Schellbach
Janet Schroeder
Joy Schuler
Alison Schulte
Brian Sebby
Rosemary Seebauer
Hannah Shearn
Gianna Rosenthal Shepard
Gary Shum
Maureen Sieger
Sarah Skilton
Ada Skyles & Kent Wilcox
Gloria Smith
Elizabeth Smolinski
Ms. Ronnie Jo Sokol

Thomas Sparks
Paul & Trish Srnak
Cary Steinbuck
Jennifer Stevenson
& Rich Bynum
Teresa Stinaldi
Kevin & Lisa Stringer
Carol Stukey
The Factory Theater
Dan Sullivan
Cynthia Summers
Jennifer Sutherland
Lewis Timberlake
Alicia Tippins
Judy Tolley
Peggy Tschannen
Charlene Uney
Johanna Van

Shannon Walters
Eileen & Tom Wehrheim
Glen Weisberg
Brian White
Ken Wieselmann
Danniel Wilke
Jan Willer & Mark Osing
Emily Wills & Nick Raef
Harold J. Winston
Elizabeth Wright & Julie E.
Julie Zack
Isabel Zack
Robert Zack
In Memory of Bernie
Greenberg

IN-KIND DONORS

2nd Story
About Face Theatre
Allison Cain
American Blues Theater
American Crew
Hair Products
Andrew Rouse
Ann Sather Restaurant
Art Encounter
Aveda Institute Chicago
Barrel of Monkeys
Bluestone Restaurant
Boho Theatre
Book Cellar
Bookends and Beginnings
Celtic Crane Services
Chestnut Mountain Resort
Chicago Botanic Garden
Chicago Children`s
Theatre
Chicago Childrens
Museum
Chicago Red Stars
Chicago Shakespeare
Theatre
Chicago Wolves
City Lit Theatre
Comedysportz
Coopers Hawk Winery
Court Theatre

Dance Center Evanston
Diane Fairchild
Dorothy Milne
Eli`s Cheesecake
Company
Father & Son Barber
Field Museum
Gene Siskel Film Center
Gene`s Sausage
Goodman Theatre
Harris Theater
Hyde Park Art Center
Illinois Shakespeare
Festival
Independent Spirits
Jackalope Theatre
Company
Joffrey Ballet
Le Piano
Lickity Split
Lookingglass Theatre
Company
Loreli Fritz-Cohn &
Steven Cohn
Lou Malnati`s Pizzeria
Lulu`s Restaurant
Lynfred Winery
Mark Greenberg
Moroccan Oil Hair
Products

Music Box Theatre
Northwestern Athletics
Oak Park Festival Theatre
Onward Restaurant
PaperSource
Peggy Notebaert
Nature Museum
Pete Ruane
Porchlight Music Theatre
Prairie Grass Cafe
Pure Salon
R Public House
Raven Theatre
Redtwist Theatre
Roche Schulfer
Scout
Shedd Aquarium
Signature Flight Support
Steppenwolf Theatre
The Actors Gymnasium
The Alley Gallery
The Second City
The Wine Goddess
Timeline Theatre
Company
Uncommon Ground
Untouchable Tours
Vin
Windy City Live
Yogaview

If you would like your name to appear differently, prefer to remain anonymous, or would like to correct an error, please call Alex Ray, Operations Manager, at (773) 761-4477 x703.

A "nasty-teen comedy...
wonderfully refreshed
and deepened" —The New York Times



SCHOOL GIRLS; OR, THE AFRICAN MEAN GIRLS PLAY

By Jocelyn Bioh, Directed by Lili-Anne Brown

MARCH 7 – APRIL 12

The reigning queen bee at Ghana's most exclusive boarding school sets her sights on the Miss Universe pageant—but a new student unexpectedly changes the game.

312.443.3800 | GoodmanTheatre.org
Groups of 10+ only: 312.443.3820

THEATRE
GOODMAN

JPMORGAN CHASE & CO.
Major Corporate Sponsor

ITW pwc
Corporate Sponsor Partners

Critic's Pick logo courtesy The New York Times.
© 2017 The New York Times Company. All rights reserved.
Used under license.