

theater  
**Wit**  
 PRESENTS  
*teenage*  
**Dick**  
 BY MIKE LEW

Cast

(in order of appearance)

MacGregor Arney\* ..... Richard  
 Tamara Rozofsky ..... Barbara "Buck"  
 Liz Cloud..... Elizabeth  
 Ty Fanning ..... Eddie  
 Sarah Price.....Clarissa  
 Courtney Rikki Green ..... Anne

Understudies

Jodi Gage, Terri Lynne Hudson, Aaron Latterell,  
 Kathleen Niemann, Matthew Schnitker

Production Crew

Brian Balcom ..... Director  
 Sotirios Livaditis..... Scenic Design  
 Michelle E. Benda..... Lighting Design  
 Eric Backus ..... Original Music and Sound Design  
 Joe Burke ..... Projection Design  
 Jonathan Berg-Einhorn..... Properties Design  
 Izumi Inaba\*\* ..... Costume Design  
 Almany Narula ..... Violence/Intimacy Design  
 Jake Ganzer..... Choreography Design  
 Clare Cooney.....Casting  
 Lucy Schuh..... Production Manager  
 Daniel Parsons ..... Assistant Production Manager  
 Sean McStravick\* ..... Stage Manager  
 Kaitlyn Salemi ..... Assistant Stage Manager  
 Evan Sposato..... Technical Director  
 Blake Cordell ..... Master Electrician  
 Jamie Krepplein ..... Scenic Charge  
 Adell Medovoy ..... Graphic Designer

\* Denotes member of Actors Equity

\*\* Denotes member of United Scenic Artists

TEENAGE DICK received its world premiere by Ma-Yi Theater Company  
(Ralph B. Peña, Producing Artistic Director),  
June 20, 2018 at the Public Theater, New York, NY.

TEENAGE DICK was developed during a residency at the Eugene O'Neill Theater Center  
(Preston Whiteway, Executive Director; Wendy C. Goldberg, Artistic Director)  
National Playwrights Conference in 2016.

TEENAGE DICK was developed by the Public Theater  
(Oskar Eustis, Artistic Director; Patrick Willingham, Executive Director).

TEENAGE DICK was commissioned and developed by The Apothetae  
(Gregg Mozgala, Artistic Director).

Developed at The Lark Play Development Center, New York City

TEENAGE DICK was developed with the support of Playwrights Foundation, San Francisco  
(Amy Mueller, Artistic Director).

TEENAGE DICK is presented by special arrangement with  
Dramatists Play Service, Inc., New York.

Special Thanks to: Steppenwolf, Shattered Globe, Northlight, VOLTA Performing Arts

Theater Wit thanks its generous institutional supporters, which include the The Gaylord & Dorothy Donnelley Foundation, the MacArthur Fund for Arts and Culture at Prince, the Shubert Foundation, and the Saints: Volunteers for the Performing Arts. Additionally, this program is partially supported by a grant from the Illinois Arts Council Agency and by a CityArts Grant from the City of Chicago Department of Cultural Affairs & Special Events.



GAYLORD & DOROTHY  
DONNELLEY FOUNDATION

THE

SHUBERT  
FOUNDATION INC.

MacArthur  
Foundation



Lori E. Lightfoot  
Mayor of Chicago

CHICAGO DEPARTMENT OF  
**DCASE**  
CULTURAL AFFAIRS & SPECIAL EVENTS

# CAST



**MACGREGOR ARNEY** (*Richard*) received his BA in theatre performance from Western Michigan University and his MFA in acting from the University of

California, San Diego. Since then he has acted all around the country, most recently at the Oregon Shakespeare Festival where he played Silvius in *AS YOU LIKE IT* and Lennox in *MACBETH*. He has also played Christopher in *THE CURIOUS INCIDENT OF THE DOG IN THE NIGHT-TIME* and Fielder in *HOODED, OR BEING BLACK FOR DUMMIES* at Mixed Blood in Minneapolis. In Denver, MacGregor played the Baker in *INTO THE WOODS* with Phamaly Theatre Company at the Denver Center of Performing Arts, and in Washington DC, he played Jonas in *GOING TO A PLACE WHERE YOU ALREADY ARE* with Theater Alliance at the Anacostia Playhouse. MacGregor currently lives with his wife in Chattanooga, Tennessee where he develops independent films with his production company, Rag n' Tag Productions.



**TAMARA ROZOFSKY** (*Buck*) is a writer, teacher, performer and storyteller from Tallahassee, FL. She contributed to the “A Ramp is Not Enough:

Religion and Disability Conference” at the Graduate Theological Union in Berkeley, CA and has given workshops, corporate trainings and presentations on a variety of topics for BMO Harris Bank, Hyatt Hotels, The Southern Shakespeare Company, Camp Horizon for adults with physical disabilities, Columbia College, Notre Dame De Namur University, University of the Pacific and California State University, East Bay.

Tamara is a graduate of the Second City's Sketch Writing and Conservatory programs and iO Theater's improvisation program. She has been featured in The Bentwood Comedy Festival, The Chicago Sketch Comedy Festival and Chicago Women's Funny Fest. Tamara has written and appeared in the original sketch comedy revues “Wigs & Bad Accents, or Identity Politics”, “16 and Pagan”, and “A Box Full of Kittens.” Since 2015 she has been involved involved with Tellin' Tales Theater and has contributed to several productions, including “Six Stories Up in a Snowstorm” “Diversity,” Lifeline Theatre's “Filet of Solo” and The Lyric Opera's “Chicago Voices, Community Created Performances.” She is thrilled to be appearing in her first production with Theater Wit!



**LIZ CLOUD** (*Elizabeth*) is thrilled to be working with Theater Wit on *TEENAGE DICK*. She received an After Dark Award and a Joseph Jefferson

citation nomination for her performance of Charlotte Bronte in *Bronte*. You can see her performing in full habit as Sister in the long running one-woman (or more correctly one-nun) comedy *LATE NITE CATECHISM* (Royal George Theatre). Credits include the Fool in *KING LEAR* (Redtwist Theatre), *THE LARAMIE PROJECT* (AstonRep), Miss Prism in *THE IMPORTANCE OF BEING EARNEST* (CenterStage), *LETTERS HOME* (Griffen Theatre), Kathleen in *FLANAGAN'S WAKE* (The Noble Fool Theater), Mrs McBride in *BIBLE BINGO* (Nuns4Fun Productions), the Shepard in *THE WINTER'S TALE* (Odds Bodkins) as well as the terse librarian in the independent film *AMERICAN FABLE*. A founding member of the improv comedy ensemble, The Free Associates, she is represented by Lily Talent.

## CAST CONTINUED



**TY FANNING** (*Eddie*) makes his Theater Wit debut. Credits include: LINDIWE (Steppenwolf), SS! MACBETH, ROMEO & JULIET, A MIDSUMMER

NIGHT'S DREAM (Chicago Shakespeare Theater), SHE STOOPS TO CONQUER, THREE SISTERS, BOOK OF WILL, MACBETH, A MIDSUMMER NIGHT'S DREAM, CYRANO (2 seasons at American Players Theater), Utah Shakespeare Festival, Door Shakespeare Company, Notre Dame Shakespeare Festival, and Montana Shakespeare in the Parks. Film credits include: SECRETS OF A PSYCHOPATH, HOME RUN, HOLLIS, DANCING IN THE CHAMBER (Best Actor at Trail Dance Film Festival), NORA, and Bob Dylan's interactive web video to LIKE A ROLLING STONE. He is represented by Gray Talent Group.



**SARAH PRICE** (*Clarissa*) is thrilled to be making her Theater Wit debut. Other Chicago credits include The Wolves (Goodman Theatre), X, Mai Dang Lao (Sideshow Theatre

Co.), Harvey (Court Theatre), Earthquakes in London (Steep Theatre Co.), You On The Moors Now (The Hypocrites), The Sweeter Option (Strawdog Theatre), Solstice (A Red Orchid Theatre), Northanger Abbey (Remy Bumpo Theatre) and Monstrous Regiment (Lifeline Theatre). Regional credits: With Love and A Major Organ (Boise Contemporary Theatre) and A Midsummer Night's Dream (Indiana Repertory Theatre). TV credits: Chicago Fire (NBC/Universal). Sarah is also a stand-up comedian, and was a featured comic at the Chicago Women's Funny Fest ('18) and 208 Comedy Festival in Boise, ID ('19). Sarah is a graduate of The

Theatre School at DePaul University, the Improv Training Program at iO, and Second City's Conservatory. Sarah is proudly represented by Gray Talent Group.



**COURTNEY RIKKI GREEN** (*Anne*) is thrilled to be making her Theater Wit debut in such an exciting piece. She received her BFA in Acting from Syracuse

University ('18) before relocating back to her hometown of the Windy City. She is an original cast member of Chicago's DRUNK SHAKESPEARE, where she performs weekly. She is proudly represented by DDO Chicago. For more, check out her website: [www.crikkigreen.com](http://www.crikkigreen.com) and feel free to follow her on Instagram @c.rikkigreen



**JODI GAGE** (*U/S—Elizabeth*) is grateful to be working with Brian and Theater Wit on this wonderful play! Jodi recently returned from performing SONG

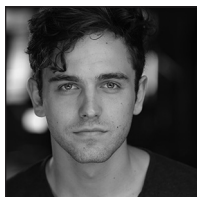
OF HOME in Poland and Moldova. Chicago credits include: LA BOHEME (Lyric Opera of Chicago), Thaisa in PERICLES, Celia in AS YOU LIKE IT, Isabella in WOMEN BEWARE WOMEN, Susanna in CARDENIO (Shakespeare Project) Regional credits: Lady Windermere in LADY WINDERMERE'S FAN (Pittsburgh Irish and Classical Theatre), Belle in A CHRISTMAS CAROL (Pittsburgh CLO), Becky in BECKY'S NEW CAR (The REP Playhouse), Heidi in [TITLE OF SHOW] (The Company of Pittsburgh). She holds an MFA in Acting from Point Park University and has trained with SITI Company. Jodi is proudly represented by Lily's Talent.

## CAST CONTINUED



**TERRI LYNNE HUDSON** (*US—Buck*) is excited to be making her understudy debut with Theater Wit. She is an actor and interdisciplinary performance artist

living in Chicago. She has most recently appeared in Stage Left Theatre's reading/workshop of *THE VOLUNTEER*, Pop Magic/Global Hive Laboratories' *MEDUSA* and Chicago Inclusion Project's reading of *THE GLASS MENAGERIE*. She is signed with BMG Talent.



**AARON LATTERELL** (*US—Eddie*) makes his Theater Wit debut. Recent Chicago credits include *THE TEMPEST*, *COMEDY OF ERRORS*, *LOVES LABOURS LOST*

(Commission Theatre); *ROBIN HOOD & MAID MARIAN* (Strawdog); *DEATHTRAP* (Drury Lane); *HAMLET* (Backroom Shakespeare); *THE HAMMER TRINITY* (The House); *THE TEMPERAMENTALS* (About Face) and others. Tours include *SEX TIPS FOR STRAIGHT WOMEN FROM A GAY MAN*, and *LETTERS HOME* (Griffin Theatre) TV/Film Credits : *CHICAGO P.D.*, *THE GIRLFRIEND EXPERIENCE*, *JUST JO*, *ASHBURN*, *DEEP WOODS*, as well as a few commercials. Aaron is repped by Big Mouth Talent.



**KATHLEEN NIEMANN** (*US—Anne and Clarissa*) is thrilled to be joining the team at Theater Wit for the first time! She has recently been seen touring the U.S. with

Griffin Theatre's *INNOVATION NATION LIVE!* and performed a solo show she wrote

and choreographed herself called *THE ONES TO REMEMBER*. She is a graduate of Ball State University and is proudly represented by Gray Talent Group. You can learn more about her at [kathleenniemann.com](http://kathleenniemann.com)!



**MATTHEW SCHNITKER** (*US—Richard*) is thrilled to be working with Theater Wit! Hailing from Florida, he graduated from the University of West

Florida with a B.A. in Acting. Recent Credits include *NON-PLAYER CHARACTER* (Red Theater), *CURIOUS GEORGE* (Northbrook Theatre for Young Audiences) and *WE FOUND A HAT* (Lifeline Theatre). Matthew is currently a Red Theater company member and this summer Matthew will be apart of Red Theaters production of *45 PLAYS FOR 45 PRESIDENTS*. Many thanks to his family and friends for all of their love and support.

# CREW

**MIKE LEW** (*Playwright*) Mike Lew's plays include *TEENAGE DICK* (Donmar Warehouse, Woolly Mammoth, Ma-Yi at the Public, and Artists Rep productions; Public Studio, O'Neill, OSF workshops), *TIGER STYLE!* (Olney, Huntington, La Jolla Playhouse, and Alliance productions; O'Neill and CTG workshops), *BIKE AMERICA* (Ma-Yi and Alliance productions), *MICROCRISIS* (Ma-Yi, InterAct, and Next Act productions), and *MOUSTACHE GUYS*, and the book to the musical *BHANGIN' IT* (Kleban and Richard Rodgers Awards; upcoming La Jolla Playhouse and McCarter Theater co-production, Jerome Robbins Project Springboard and Rhinebeck Writers Retreat "Triple R" workshops). He is a Tony voter, Dramatists Guild Council member, and a resident of New Dramatists. Mike's honours include a Mellon National Playwrights Residency at Ma-Yi and La Jolla Playhouse Artist-in-Residence, both with Rehana Lew Mirza; Lark Venturous and NYFA fellowships; and the PEN Emerging Playwright, Lanford Wilson, Helen Merrill, Heideman, and Keneda awards. Education: Juilliard, Yale. Website: [mikelew.com](http://mikelew.com).

**BRIAN BALCOM** (*Director*) is a disabled, Asian-American director working in Chicago and Minneapolis. With a BFA in directing from Carnegie-Mellon University, he started a small theater company dedicated to commissioning work from Jerome and McKnight fellows from the Playwrights Center. He produced and directed seven new plays and his company was invited to present at the Southern and Guthrie Theatres. In Minneapolis, he also worked with Gremlin Theater, The Playwrights Center, Walking Shadow Company, Artistry, and Mu Performing Arts. He moved to Chicago to earn his MFA in directing from The Theatre School at DePaul University. Since graduating, he was a Multi-Cultural Fellow at Steppenwolf Theater, directed readings and short plays at Route 66, Broken Nose, The Gift, Silk Road, A-Squared, and La Jolla Rep, and currently works as the access coordinator at Victory Gardens Theater. He has upcoming productions with Mu Performing Arts in Minnesota and American Stage in Florida.

**SOTIRIOS LIVADITIS** (*Scenic Designer*) is thrilled to make his debut at Theater Wit. Recent projects include *MOSQUITOES* (Steep Theatre), *OUT OF LOVE* (Interrobang Theatre Project), *HANS CHRISTIAN ANDERSEN*,

*WHEN SHE HAD WINGS* (Northwestern University), *FOR SERVICES RENDERED, THE HARVEST* (Griffin Theatre), *SMALL WORLD, FUN HARMLESS WARMACHINE* (The New Colony), *LANGUAGE ROOMS* (Broken Nose Theatre) *HOODED, OR BEING BLACK FOR DUMMIES* (First Floor Theatre), *THE LIGHT FANTASTIC, 1980* or *WHY I'M VOTING FOR JOHN ANDERSON* (Jackalope Theatre). He has worked as an associate designer with Chicago Shakespeare Theatre, Milwaukee Repertory Theatre, The House Theatre of Chicago, Steppenwolf Theatre, The Alliance Theatre and The Irish National Opera. MFA - Northwestern University. Please experience more of his work at [www.sotiriosdesigns.com](http://www.sotiriosdesigns.com).

**MICHELLE E. BENDA** (*Lighting Designer*) is a lighting designer and assistant based in Chicago. Lighting design credits include *OUT OF LOVE, UTILITY, I CALL MY BROTHERS* (Interrobang Theatre Project); *EVERYBODY* (Brown Paper Box Co.), *HAMLET* (The Gift Theatre), *THE GENTLEMAN CALLER* (Raven Theatre); *BURY ME* (Dandelion Theatre); and *FAILURE: A LOVE STORY* (Illinois Theatre). She has assisted lighting designers at Goodman Theatre, Steppenwolf Theatre Company, Chicago Shakespeare Theater, and TimeLine Theatre Company. Michelle holds an MFA in Lighting Design and Technology from the University of Illinois at Urbana-Champaign.

**ERIC BACKUS** (*Composer/Sound Designer*) is excited to work at Theater Wit for the first time! Off-Broadway: *HOLLOW/WAVE* (United Solo Festival), *CHURCHILL* (Solo Chicago Theatre); REGIONAL: *MARK TWAIN'S RIVER OF SONG, THE ALL NIGHT STRUT* (Milwaukee Rep.), *SHAKESPEARE IN LOVE, MISS BENNET: CHRISTMAS AT PEMBERLEY* (TheatreSquared), *LEGALLY BLONDE* (Northern Stage), *WORKING: A MUSICAL, MURDER FOR TWO* (Merry Go Round Playhouse). Recent Chicago credits include *PLANO* (First Floor Theater, Steppenwolf LookOut Series), *SHORT SHAKES! COMEDY OF ERRORS* (Chicago Shakespeare Theater), *A DOLL'S HOUSE* (Raven Theatre), and *EVERY BRILLIANT THING* (Windy City Playhouse). To hear more of his music, please visit [ericbackus.com](http://ericbackus.com).

**JOE BURKE** (*Projection Design*) is pleased to be collaborating with Theater Wit. Based in Chicago, Joe specializes in projection design and

## CREW CONTINUED

content creation for live performance. In 2018 he received the Joseph Jefferson Award for his projection design of *ELF THE MUSICAL*. Recent credits include: *AUGUST RUSH THE MUSICAL* (Paramount Theatre - world premiere), *NEWSIES* (Paramount Theatre), *OKLAHOMA!* (Sacramento Music Circus), *7 SOLILOQUIES* (*ART ON THE MART*). [www.josephaburke.com](http://www.josephaburke.com)

**JONATHAN BERG-EINHORN** (*Properties Design*) is a Chicago based designer and artisan and holds a BFA in Scenic and Costume Design from Boston University. Scenic Design: *WHO KILLED JOAN CRAWFORD?* (Glitterati Productions), *ALICE IN WONDERLAND*, *THE ARC TRIALS* (Mudlark Theatre); *CURIOUS GEORGE: THE GOLDEN MEATBALL* (Hope Summer Repertory Theater); *BROOKE ASTOR'S LAST AFFAIR* (Chicago Musical Theatre Festival), *THE SEVEN DEADLY SINS*, *ENDGAME* (Boston University). Prop Design: *HAYMARKET* (Underscore Theatre); *SOMETHING CLEAN*, *SCIENTIFIC METHOD*, *I WANNA FUCKING TEAR YOU APART* (Rivendell Theatre Ensemble); *HELA*, *THE RIDICULOUS DARKNESS* (Sideshow Theatre); *SHEEPDOG*, *HANNAH AND MARTIN* (Shattered Globe Theatre); *TWICE*, *THRICE*, *FRICE* (Silk Road Rising); *ELEPHANT MAN*, *BOMBER'S MOON* (William Street Rep); *I KNOW MY OWN HEART* (Pride Films and Plays). [Jonathanbergeinhorn.com](http://Jonathanbergeinhorn.com).

**IZUMI INABA** (*Costume Designer*) Previously at Wit: *THE NEW SINCERITY*, *10 OUT OF 12*. Recent Chicago credits: *A DOLL'S HOUSE PART 2* (Steppenwolf), *TWILIGHT BOWL* (Goodman), *MOTHER OF THE MAID*, *WICKHAMS* (Northlight), *CAMBODIAN ROCK BAND* (Victory Gardens), *A DOLL'S HOUSE* (Writers). Regional: Milwaukee Rep, St. Louis Repertory, Kirk Douglas, Baltimore Center Stage, City Theatre, Merrimack Repertory, Long Wharf. A member of USA Local 829.

**ALMANYA NARULA** (*Violence/ Intimacy Design*) is a Jeff Nominated Fight Choreographer, Actor, and Writer. She recently received her M.A in *NEW ARTS JOURNALISM* from The Art Institute of Chicago where she founded *CHICAGO THEATRE NOW* - a print publication featuring

opinion articles from industry members discussing principles of diversity, equity, and inclusion in the rehearsal space. She is also the co-founder of *SIZZLING SWASHBUCKLING SISTERS* - a burlesque sword fighting act, created with the hopes of empowering women and countering the lack of fem representation within the combat world.'

**JAKE GANZER** (*Choreographer*) is grateful to be working with Theater Wit for the first time! A graduate of Columbia College Chicago, he has directed, choreographed, and educated throughout the Chicagoland area. Previous production credits include *ALL THAT HE WAS* (Pride Films and Plays), *THE TEMPEST* (Commission Theatre), *JOSEPH...DREAMCOAT*, *ANNIE*, and *THE FANTASTICKS* (Citadel Theatre). He has performed at Porchlight Music Theatre, Music Theater Works/Light Opera Works, Kokandy Productions, and Congo Square Theater. "Grateful to teachers, friends, and family for the love and support."

**CLARE COONEY** (*Casting Director*) In addition to Theater Wit, Clare also does casting for independent film projects in Chicago and occasionally works with the ladies at PR Casting. Clare is also an actor, filmmaker, and editor, and she is a "Filmmaker to Watch" nominee from the Academy-Qualifying Atlanta Film Fest. Clare wrote and directed *RUNNER*, a short film that played at 15 film festivals, winning 6 awards. Recent film/TV credits: *CHICAGO PD* (NBC), *WIDOWS* (Steve McQueen), *HOT DATE* (Pop Network). Recent stage credits include *KING CHARLES III* (Cardinal Stage), *PIRANDELLO'S HENRY IV* (Remy Bumpo), *CHOPS* (Dashnight Productions). In Chicago she has also worked with Chicago Dramatists, Northlight Theatre, Theater Wit, Redtwist Theatre, and the Backroom Shakespeare Project. Clare is a Detroit native and proud to be a graduate of The School at Steppenwolf and The University of Notre Dame. She is represented by DDO Artists Agency. [clare-cooney.com](http://clare-cooney.com)

**LUCY SCHUH** (*Production Manager*) is happy to be working with Theater Wit once again, having previously joined them as the assistant production manager on *THE ANTELOPE PARTY*, *THE REALISTIC JONESES*, and *ADMISSIONS*. Lucy recently joined the staff of Mudlark Theater as their Production Manager. Other Production

## CREW CONTINUED

Management credits include: HANNAH AND MARTING and BE HERE NOW (Shattered Globe) and The Chicago Musical Theater Festival 2019. Lucy has freelanced as a stage manager with many Chicago theaters including The Polar Express, Silk Road Rising, Emerald City Theater, Timeline Theater, and Court Theatre. Lucy has a B.A. in Theatre Studies from Northern Arizona University.

**KAITLYN SALEMI** (*Assistant Stage Manager*) is excited to join the Theater Wit team for the very first time. Recent projects include Murder on the Nile (Oil Lamp Theater), Wolf Play (The Gift Theatre), Next to Normal (Writers Theatre). She has also worked with Shattered Globe Theatre, Gilbert and Sullivan Opera Company, Chicago Musical Theatre Festival, Goodman Theatre, Metropolis School of Performing Arts, AstonRep Theatre Company. Kaitlyn has a B.M. in Music Business and Theatre from Elmhurst College.

**SEAN MCSTRAVICK** (*Stage Manager*) is pleased to return to Theater Wit after last season's ADMISSIONS. They have been a member of the stage management team on over one hundred productions, at companies including: NTYA, MusACKal Inc., Porchlight Music Theatre, Music Theater Works, Berkeley Repertory Theatre, Marin Theatre Company (four years as Staff PSM), the Reduced Shakespeare Company, North Coast Repertory, R.H. Orman Inc., Shotgun Players, and the Willows Theatre Company. Sean is a proud member of Actors' Equity Association.

**EVAN SPOSATO** (*Technical Director*) Evan has spend the last two decades in and around the theatre as an actor, director, stage manager, technical director, and production manager. He spent eight years at the Waterville Opera House in Waterville, Maine, working both onstage and behind the scenes. During the Opera House's centennial renovation, he was the technical advisor to the building team and wrote grants totaling more than \$2 million. While in Maine, Evan also served as the longtime president of the board of directors of Aqua City Actor's Theatre and worked with Bossov Ballet Theatre and Everyman Repertory Theatre. Since moving to the Chicago area, Evan has worked as the Technical Director and Production Manager at

Drury Lane and has built shows for Jackalope, Steep, Interrobang, CloudGate, New Colony (ensemble member), and others. When Evan isn't in a theater, he works with political campaigns on voter contact and digital outreach.

**JEREMY WECHSLER** (*Theater Wit Founding Artistic Director*) has directed the Chicago premieres of THE REALISTIC JONESES, THE ANTELOPE PARTY, 10 OUT OF 12, NAPERVILLE (Jeff Award), THIS WAY OUT OF SANTALAND, THE NEW SINCERITY, THE (CURIOUS CASE OF THE) WATSON INTELLIGENCE (Best of 2015 - Sun Times), BAD JEWS (Best of 2015 - New City), MR BURNS: A POST-ELECTRIC PLAY (Time Out Peoples' Choice Award for Direction, Best of 2015), SEVEN HOMELESS MAMMOTHS WANDER NEW ENGLAND (Sun Times Best of Year 2014), COMPLETENESS, TIGERS BE STILL, THIS, THE FOUR OF US, FEYDEAU-SI-DEAU, MEN OF STEEL, THOM PAIN (BASED ON NOTHING) (Jeff Award - Best Solo Performance), TWO FOR THE SHOW and many many productions of THE SANTALAND DIARIES. Under Jeremy's leadership over the last fifteen years, Theater Wit has emerged as the go to destination for cutting edge contemporary work, gaining national recognition for excellence. He has directed over sixty shows in the last twenty years at various theaters, including TRAGEDY A TRAGEDY, THE FLU SEASON, A TASTE OF HONEY ("US Best of 2008" in The Wall Street Journal), NOW THEN AGAIN (Jeff Award - Best New Work), THE PLAY ABOUT THE SQUIRREL, THE WHITE DEVIL, THIS IS NOT A PLAY ABOUT CANCER, PEER GYNT, THE REAL THING, SZINHAZ, THE DUCHESS OF MALFI, TRAGEDY A TRAGEDY, TITUS ANDRONICUS, THE ROARING GIRL, FLIGHT, THE MOST FABULOUS STORY EVERY TOLD, THIS IS THE RILL SPEAKING, HAY FEVER, A MONTH IN THE COUNTRY, EUROPE, HENRY VI: BLOOD OF A NATION, THE PROMISE, SPIN, UN ROBOT, HORROR ACADEMY, KIND LADY, PLAYING BY THE RULES, THE MARRIAGE OF BETTE AND BOO, SOLITAIRE, THE COARSE ACTING SHOW, LIFE IS A DREAM, THE PRISONER'S DILEMMA, CABARET and THE THREEPENNY OPERA. His productions have been nominated for and won multiple awards for design, performance, adaptation and best new work.





## At Theater Wit

We are a theater company within a building, within a community, within a world.

As a production company, Theater Wit's mission is to be the premier "smart art" theater in Chicago by producing humorous, challenging, and intelligent plays that speak with a contemporary theatrical voice.

As an institution, Theater Wit seeks to be the hub of the Chicago neighborhood theater scene. In our three spaces, we bring together Chicago's best storefront theater companies. Here you will find a smorgasbord of excellent productions, see the work of a parade of talented artists, and mingle with audiences from all over Chicago.

## In the Middle of a Community

Everyone here: folks in the audience... the person who handed you this program... somewhere on or off the stage there are actors... if you look up in the corner you might get a glimpse of the stage manager in the booth... We're all in this room for the same reason: to be a part of this shared experience. No matter who they are or where they come from; no matter if they are complete strangers or familiar faces; no matter how different the age, the race, or the walk of life; after this performance, you will have something in common. So, strike up a conversation in the lobby, introduce yourself to someone new. Meet our staff, shake hands with an actor, get a drink from our bar. We're all in this together.

## Part of the Chicago Scene

Theater is part of the Chicago experience. Each year, over 200 theaters present thousands of shows to Chicago's loyal and enthusiastic theater-going audience. Chicago's theater community is recognized around the world for its talent, its innovation and its power to entertain and enlighten. If Tony awards were sports championships, our artists would beat out the combined efforts of Michael Jordan, Bobby Hull, Jim McMahon, Jermaine Dye, and the entire Chicago Cubs roster going back 100 years. This stage is a Chicago stage, contributing to the vibrant artistic life of our city and the economic development of our neighborhood. Very few cities on the planet offer the theatrical richness and diversity of Chicago. But you get to share in it. Because you are here.



*ANY TIME  
ANY SHOW  
AS OFTEN AS YOU LIKE*

.....

# THEATER WITH MEMBERSHIP

\$29/month

.....

.....

## FLEXPASS

10 tickets for \$275

.....

- See anything in the building at a dramatically reduced price.
- See 10 shows, go on 5 dates, or just bring your 9 closest friends with you to one show.
- After ordering, you get a card in the mail within a week with your Flexpass code which can be used online, over the phone or at the box office

See any play in our building, any time, as often as you like for one flat monthly fee.

Reserve a ticket for any production in our facility. Do it in advance or just drop by on impulse.

Free ticket exchanges and replacement tickets.

Attend as many different shows as you want each month. Come once, twice or five times a week at no additional charge.

No initiation or startup fee, but members must agree to a three-month minimum.

Twice a year, bring a friend for free.

# THEATER WIT STAFF

## BOARD OF DIRECTORS

**KATHRYN STIEBER**  
*President*

**CHARLES HORNEWER**  
*Treasurer*

**NEAL SMYTH**  
*Secretary*

**ROGER DANIEL**  
**DAVID MAHVI**  
**ROCHE SCHULFER**  
**BRUCE WECHSLER**

## STAFF

**JEREMY WECHSLER**  
*Artistic Director*

**DAVID WECHSLER**  
*Company Manager*

**JOSH NORDMARK**  
*Office Manager*

**NEAL JAVENKOSKI**  
*Facilities Manager*

**ALEXA ULRICH**  
*Front-of-House Manager*

**CLARE COONEY**  
*Casting*

**JESS MAYNARD**  
*Social Media*

**JAY KELLY**  
*Press Relations*

**REBECCA FLORES**  
**SARAH LUSE**  
**JACKELYN NORMAND**  
**EVAN BELL**  
**CORRINE GLANVILLE**  
**MEGHAN MODROVSKY**  
**JACOB R. SHAFFER**  
**JULIAN STROOP**  
*Front of House*

# THEATER WIT SUPPORTERS

## LEADERSHIP CIRCLE (\$5000+)

Anonymous x2  
August Bechtner  
City of Chicago Department of Cultural Affairs  
Paul Danao and Deanna Conklin-Danao  
gaylord and Dorothy Donnelley Foundation  
Illinois Arts Council Agency  
MacArthur Fund for Arts and Culture at Prince  
The Shubert Foundation  
Jeremy Wechsler and Penny Penniston  
Bruce and Sandra Wechsler

## FOUNDERS' CIRCLE (\$1000-\$4999)

Ed Bachrach  
Chris Comerford and Virginia Kim  
Michele Coudures  
Daniel R Cyganowski  
Roger and Abby Daniel  
Bret Gitskin and Mirelle Swain  
Todd Goldberg  
Goldman Sachs & Co  
Chuck Hornewer and Ashley Nelson  
Lakeview SSA 27  
David Mahvi and Oya Celikbilek  
Jeffrey and Mona Morris  
Arthur Murphy and Audrey Davis  
Gabriel and Dorit Raviv  
Roche Schulfer and Mary Beth Fisher  
Eric Slauter  
Neal Smyth and Martha Christensen  
Kathryn Stieber  
James and Jessica Turner

## DIRECTORS' CIRCLE (\$500-\$999)

James and Brenda Grusecki  
Alden L. and Kristen Senior  
Randy and Lisa White

## PERFORMANCE CIRCLE (\$250-\$499)

Glenn and Andria Anderson • Anonymous • Nancy  
S. Bishop • Lisa Chalem • Sue and Arnold Flank •  
Forefront • Cynthia Ho • Estate of Doris M. Kasiak  
• Jean Klingenstein • Dagmara Kokonas • Florence  
D. McMillan • Diana and Richard Senior • Shauna  
Peet • Philip Rotner • The Saints:Volunteers for  
the Performing Arts • Karen and Frank Schneider  
• J. Eric Smith and Marcia Brom Smith • Susan  
Smyth • Victoria Sterling • Lauren Taslitz • James  
L.Thompson • Ann and Jeff Walters • Lali and Ian  
Watt • Melody Wechsler

# THEATER WIT SUPPORTERS

## Artists' Circle (\$100-\$249)

Andreas Melinat • Roland D Batten • Susan R. Benner • Jeff and Sharon Berke • Bernice Bigelow • Joyce E Chelberg • Mike Christ • Circle of Service • Randall M Clark, Jr. • Stefanie Clark • Victor L Corder • Alan and Hedy Daniel • Scott Dray • Andrew Etheridge • Jeffrey Fleitz • Madeleine George • David Gitomer • Ethel and Bill Gofen • Joel Goldsmith • Kim Graber • Dorothy G Harza • Dennis and Melanie Hauser • Lois J. and James D. Hobart • Donald Hoffman • John Jay • Pegi Johns • Carolyn and Gordon Kirk • Gregory Knapp • Dede Kokolis • Roni Kubsk • Gaby Kuhn • Michael Leppen • Philip Leverette • Larry Little • Gloria Maile • Jeanne Martineau • Corinne Morrissey • Elaine Newquist • Janis W and John Notz • Melissa Otte • Carolyn and Peter Pereira • Henry H Perritt • Doug Pruitt • Jack Rubin and Pat Yuzawa-Rubin • Christopher and Annmarie Saturnus • Lynne and Ralph Schatz • Carol Senderowitz • Alicia M and Phil Senior-Saywell • Heidi and David Serwer • Timothy C Sherck • James and Andra Velis Simon • J. Eric Smith and Marcia Brom Smith • Neal and Bonnie Smyth • Linda Stevenson • Kelly and Jami Stone • Martin Till • Richard Turner • Rinda West • Mark Zampardo • Renee Zellner • Charlotte Ziporyn

## Wit Club (\$1-\$99)

Kurt D Baer • Skylar Aran • Brad Brezinski • Shane Pederson • Lerman Abraham • Patrizia Lombardi Acerra • Greg Albiero • Scott Allen • James Allenspach • Leslie Kiefer Amann • Terry Andrews • Jonathan Appelbaum • Anthony Arciero • Gerrilyn Aubin • Thomas Awrey • Drew Awsumb • Robert Bannon • Gabrielle Batot • Jennifer Bean • Roy Bergstrom • Steve Berlin • Suzi Birz • William Black • Dominique Blanks • Mary Bonnett • Erwin & Carmon Booth • William Bosron • Karl Bradley • Laurie Bradley • James L. Brott • Bonita Bryant • Patricia Sue Bulitta • John Burke • Susan Buss • Karen A. Callaway • Carol Campbell • Carol and Stephen Cann • Margaret Cello • Sean Chandler • Jorge Clemente • Richard Cndida-Smith • David Collins • Micheal Corbin • Darwin Corrin • Mary & Tim Cronin • Erin Crouch • Linda C Crowder • Vanja Cuk • Bruce Davidson • John Keller DDS • Brian Delaney • Susan Dickson • Michele Dlssehorst • Aaron R Dunlap • Barbara Eckel • Culvin Edwards • A.A. Estock • Dean Fales • Diane M Falk • Kathleen Fassel • Vivian Fernbacher • Ellen Fiedelholz • Will Fisher • Daniel Fisher • Alice Flynn • James Foley • Linda Forman • Timothy Fortes • Anne Fox • Robert A. Franchina • Kati Fratesi • Friends of Lakeview NFP • Anne Garvey • Frank W. Gassmann • Cynthia Gelper • Robyn Gilliom and Richard Friedman • Denise Gincastro • Janice Gintzler • Jim Glasson • Jennifer Goldberg • Andrea Goldberg • Adam Gooch • Cynthia Grunden • Carlos Gutierrez • TK Harigovind • Angeline Heisler • Kathleen Hess • Marcia Hoisington • Robert L. Holliday • Stacey Homuth • Becky Huinker • Allyson Hunter • Erin Hurlley • Rosalind Hurwitz • Dustin Ingram • Dina Isaacs • Theresa Jabaley • Edward Jarot • JLL Community Connection • Joshua Johnston • Mike Jones • Emma Kalaidjian • Margery Kanemoto • Mike Kanovitz • Loretta Kaplan • Sara L Karlin • "Anastasia Katinas, in support of the fabulous Kathy Stieber" • Megan Kieras • Stanley King • Tanya Klasser • Cathy Dee Knepper • Maria Kolb • Jean Marie and Rob Koon • Kevin S. and Cynthia A. Koppelman • Denice Korcal • Maureen Koval • Fran Landt • Loretta Lattyak • David Lee • Nicholas Lin • David Lind • Robert Lisec • Isabel Liss • Eduardo Luna • Edward MacLennan • Roth Magda • Anthony Marano • Frank Marchese • Melissa Matarrese • Mikayla Matz • Mary McCormick • Elizabeth McEnroe • William McHugh • Keith McKinstery • Terrence D. McMahon • William Meaux • Nora Mendler • Tom Mikrut • Laurie Mikva • Rebecca K. Mills • Barry Minx • Mary Molnar • Madeline Moon • Bethany Morgan • Barbara Morgenstern • Jake Morley • Mackenna Morse • Daniella Mostow • Lenore Murphy • Maggie Murphy • Alison Nelson • John H Nelson • Jonathan Nessel • Eric Neumann • Phyllis Nickel • Greg Niel • Sami and John Nordmark • Colm O'Muircheartaigh • Leah Ochroch • Branislava Opacic • James Orr • Ronnie Ortiz • Yosuke Ota • Gregg Owen • Rose Owen • Karen Pam • William Parkhurst • Susan S. Pastin • Gordana peric • Cristina Perona • Tina Perona • Kenneth W Peterson • Ken and Maria Peterson • Jay H Peterson • Sven Peterson • Don Phillips • Tami Pinsker • Laura Pitrak • Angelika Piwowarczyk • Brian James Polak • Shawn Pound • Christine Prevolos • Glen Prezembel • Michael Quoss • Megan Ralston • Phyllis Remer • Kristen Lewis Renner • Elizabeth Rick • Ronald Rutkowski • Sigourney Sanders • Hunter Sanders • Susan Sarran • Jeffrey Schad • Roger schoenfeld • Suzanne Schriar • James T Schulman • Paul Senegal • Linda B. and Robert J. Shanko • Steven C Shay • Allen Shoenberger • Gayle Siegel • Felicity Skidmore • Keith Sklar • Jane Smith • Patricia Sprinkle • Carole Stackhouse • Don and Judy Stanner • Lisa Stebbins • Elizabeth Steinert • David Stone • Tina Strout • Lynne Swanson • Jim Swanson • Cuixiang Tan • Tayfun Tan • Roberta Temkin • Jordan Tilden • Ronald Tracy • Eileen Trost • James Tully • Denise Turcotte • Melissa A Unger • Karen Urban • Andrea Valouskova • Elizabeth Van Ness • Carina Veracieto • Laura Vernon • Tim Vesperman • Karen Walters • Michael Waring • Michael Weiner • Gregory and Alyssa Werstler • Valerie C. Whiteside • David Wisniewski • Linda S Wolff • Joshua Wolff • Flavia Yamamoto-Nicolucci • Phillip Yero • Jessica Young • Gary and Mary Young • Beverly Yusim • Lara Ziembra